

LETTER • OPEN ACCESS

Monitoring hydropower reliability in Malawi with satellite data and machine learning

To cite this article: Giacomo Falchetta *et al* 2020 *Environ. Res. Lett.* **15** 014011

View the [article online](#) for updates and enhancements.

Environmental Research Letters



LETTER

Monitoring hydropower reliability in Malawi with satellite data and machine learning

OPEN ACCESS

RECEIVED

7 October 2019

REVISED

19 December 2019

ACCEPTED FOR PUBLICATION

24 December 2019

PUBLISHED

17 January 2020

Giacomo Falchetta^{1,2} , Chisomo Kasamba³ and Simon C Parkinson^{4,5} ¹ Future Energy Program, FEEM—Fondazione Eni Enrico Mattei, Italy² Department of International Economics, Institutions and Development, Catholic University, Italy³ Department of Energy, Ministry of Natural Resources, Energy and Mines of Malawi, Malawi⁴ Energy Program, International Institute for Applied Systems Analysis (IIASA), Austria⁵ Institute for Integrated Energy Systems, University of Victoria, CanadaE-mail: chisomokasamba@yahoo.it and giacomo.falchetta@feem.it

Original content from this work may be used under the terms of the [Creative Commons Attribution 3.0 licence](https://creativecommons.org/licenses/by/4.0/).

Any further distribution of this work must maintain attribution to the author(s) and the title of the work, journal citation and DOI.

**Keywords:** hydroelectricity, vulnerability, extreme hydroclimatic events, energy-climate-water nexus, random forests, remote sensingSupplementary material for this article is available [online](#)**Abstract**

Hydro-climatic extremes can affect the reliability of electricity supply, in particular in countries that depend greatly on hydropower or cooling water and have a limited adaptive capacity. Assessments of the vulnerability of the power sector and of the impact of extreme events are thus crucial for decision-makers, and yet often they are severely constrained by data scarcity. Here, we introduce and validate an energy-climate-water framework linking remotely-sensed data from multiple satellite missions and instruments (TOPEX/POSEIDON, OSTM/Jason, VIIRS, MODIS, TMPA, AMSR-E) and field observations. The platform exploits random forests regression algorithms to mitigate data scarcity and predict river discharge variability when ungauged. The validated predictions are used to assess the impact of hydroclimatic extremes on hydropower reliability and on the final use of electricity in urban areas proxied by nighttime light radiance variation. We apply the framework to the case of Malawi for the periods 2000–2018 and 2012–2018 for hydrology and power, respectively. Our results highlight the significant impact of hydro-climatic variability and dry extremes on both the supply of electricity and its final use. We thus show that a modelling framework based on open-access data from satellites, machine learning algorithms, and regression analysis can mitigate data scarcity and improve the understanding of vulnerabilities. The proposed approach can support long-term infrastructure development monitoring and identify vulnerable populations, in particular under a changing climate.

Acronyms

ATCF	As-the-crow-flies	HCF	Hydropower capacity factor
CHIRPS	Climate Hazards Group InfraRed Precipitation with Station data	HPP	Hydropower plant
DD	Discharge Deviation	KGE	Kling-Gupta Efficiency
EGENCO	Electricity Generation Company Malawi	ML	Machine learning
GADM	Database of Global Administrative Areas	MLI	Maximum likelihood
G-REALM	Global Reservoirs/Lakes database	MODIS	Moderate Resolution Imaging Spectroradiometer
		MOAIWD	Ministry of Agriculture, Irrigation and Water Development
		MV	Medium-voltage

NOAA-CDR	National Oceanic and Atmospheric Administration—Climate Data Record
NTL	Nighttime light
NSE	Nash-Sutcliffe Efficiency
P.P.	Percentage point
PV	Photovoltaics
RF	Random forests
SPEI	Standardised Precipitation-Evapotranspiration Index
SSA	Sub-Saharan Africa
VIIRS-DNB	Visible Infrared Imaging Radiometer Suite Day/Night Band.

Introduction

Developing countries experience recurrent issues in guaranteeing a reliable and secure provision of electricity to satisfy their domestic demand, with significant repercussions on economic growth and development prospects [1–5] and on the environment [6, 7]. A scarce diversification of the generation mix, the lack of sufficient and affordable back-up options, a limited adaptive capacity, and few international transmission lines represent some of the key underlying issues.

In sub-Saharan Africa, dependency on hydropower represents one of the most critical aspects of sustainable development [8, 9]. A large number of countries lack affordable means for coping with temporary disruptions caused, for instance, by hydro-climatic extremes such as a delayed rainy season or anomalous drought and flood periods. Diesel back-up capacity provided by independent power producers is often prohibitively costly for fully replacing the temporary loss in hydro generation [10]. As a result, load sheddings, brownouts, and blackouts are recurrent. Over the recent years, drought-related disruptions have been reported, for instance, in Kenya, Malawi, Tanzania, Ghana, Zimbabwe and Zambia, with frequent outages, power rationing, adverse business experience and competitiveness loss during precipitation anomalies [11].

Hydrological measurements and electricity supply and use data are affected by scarcity, quality, or inaccessibility issues [12]. This represents a great barrier to performing effective integrated assessment studies, developing modelling frameworks, and recommending policies for resilience building. While a multitude of studies have been carried out at the basin or global scale in terms of assessing the projected long-term impacts of climate change on hydropower generation potential [13–18] and on the discharge of rivers [19],

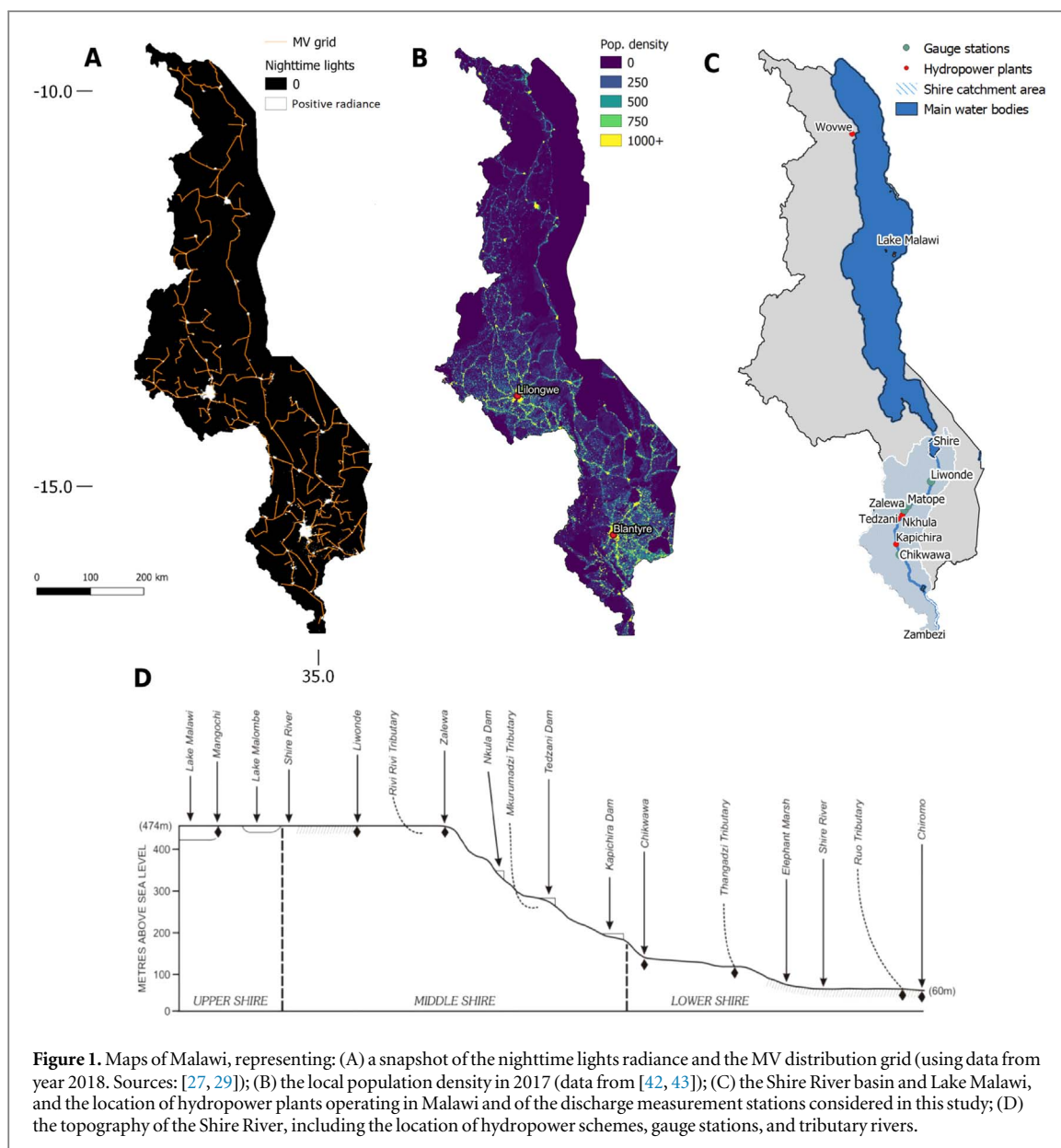
only few have assessed the impact of hydro-climatic extreme events on power supply reliability [20–22] and the related impacts on electricity consumption. Moreover, researchers (see [23]) have recently highlighted the necessity of reconciling top-down and bottom-up approaches to climate and energy-related assessment, indicating that novel methodologies—including the use of earth observation data [24, 25]—are required.

Here, we propose a novel framework based on open-access satellite-derived observations and their coupling with and validation against limited field data. The approach is applied to the case of Malawi, a country almost entirely dependent on hydropower [26] and currently lacking international transmission interconnections [27]. Input data (see table SI1) include: remotely-sensed measurements on Lake Malawi water level (from the G-REALM database) [28], VIIRS-DNB product nighttime lights [29] (as a proxy of the local monthly urban electricity use in the country, see [30–33], and thus also of outages [34, 35]), and climate conditions (including the SPEI drought index [36], precipitations [37], temperature [38], and soil moisture [39]). These datasets are modelled and validated against daily gauge data for discharge in the Shire River (between 2000 and 2018) and power generation at HPPs (between 2012 and 2018).

Our contribution shows that a modelling framework exploiting open climate and remotely-sensed data can reconstruct discharge measurements in situations of data scarcity and thus evaluate the impact of extreme hydro-climatic events on hydropower reliability. In turn, it provides a proof-of-concept for the use of nighttime satellite measurements of electric light radiance as a proxy to observe urban power consumption responses to hydrological shocks, underpinning the challenges stemming from a dependency on hydropower. This is a particularly relevant finding given the forecasted intensification of extreme hydrological events in East Africa [40].

Study area: contextualising the case of the Shire River Basin in Malawi

Figure 1 depicts the nighttime light radiance and the MV distribution grid (panel A)—which provide a snapshot of the current local electricity access and use situation—, the georeferenced population density of Malawi for year 2018 [41] (panel B), and the hydrological basin modelled in this study (panel C), including the location of the hydropower stations currently operating in the country and the hydrological gauge stations. The population is distributed, with high density settlements concentrated in the center-south of the country, around the cities of Lilongwe and Blantyre. Lake Malawi, the third largest in Africa by extent, delimits a large part of the eastern border of the country. The Shire River is an outlet of Lake Malawi, and along it the bulk of the installed hydropower



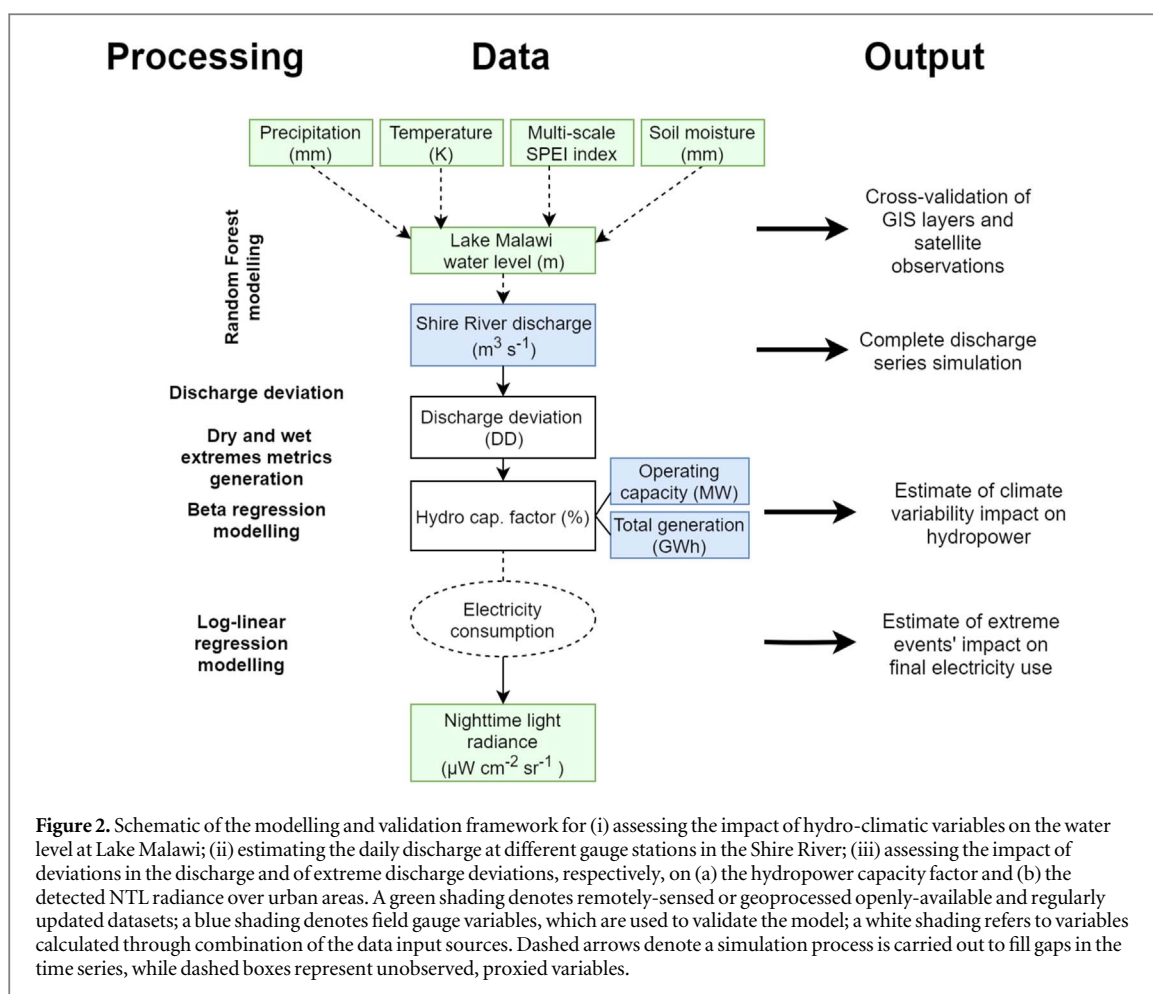
capacity is concentrated. Table SI2 is available online at stacks.iop.org/ERL/15/014011/mmedia lists the technical specifications of each of those generation plants. Figure 1(D) provides a profile view of the topography of the Shire River, including the location of dams, gauge stations, and tributary rivers.

Previous hydrological studies have assessed the trends and relationships between the water level in Lake Malawi [44, 45], the discharge in the Shire River [46], and the observed and potential impacts of climate change on the local hydrology [47, 48] and hydropower generation [49], as well as the perceived risks and potential adaptation options under climatic and socio-economic uncertainty in the Shire River Basin [50]. The literature has also highlighted that the lake level is highly sensitive to climate variability [46], with cyclic fluctuations in levels being largely subject to annual rainfall patterns and seasonal precipitation and temperature variables anticipating lake level changes by approximately two months. According to

modelling studies based on downscaled climate projections [48], a warmer climate will likely contribute to a further decrease in the water balance. Concerning discharge in the Shire River, local precipitations and temperature have been found to anticipate river flow surges by 2 d [46]. In general, long-lived hydrological flood and drought events in the Shire River basin are influenced by the large-scale atmospheric circulation and rainfall in the surrounding highlands. Hence, impact assessment tools should consider satellite and radar coverage of the entire basin.

Materials and methods

Figure 2 presents a schematic of the integrated framework here proposed and tested empirically. The acquisition and processing procedure for each specific dataset and variable is fully described in the Detailed Materials and Methods section in the SI, which also



includes the explicit regression equations, random forest parameters and set-up, and GIS algorithms operated at each stage of the platform. Monthly-invariant factors are always included to control for the role of seasonality in hydrological, climate, and power supply and demand. The Data Availability section presents a repository integrating R, Python and Google Earth Engine API code that enable the replication of the modelling framework and results.

First, a random forests algorithm (run using the *caret* R package [51] with 250 trees, a 10-dimensional parameter tuning length, and a 10-fold cross-validation) assesses the predictive power of open-data measured over the entire Shire River Basin for precipitations, temperature, soil moisture, and the SPEI index (Standardised Precipitation Evapotranspiration Index, see table SI3 for the definition and classification of its values) at multiple scales [36] over the water level measured by satellites at Lake Malawi [28]. This step evaluates the consistency among remotely-sensed and field gauge observations.

Lake Malawi's level measurements are then combined with climate control variables to account for precipitations and evapotranspiration over the entire river basin and used to evaluate the predictive accuracy over the discharge (measured in $\text{m}^3 \text{s}^{-1}$) in the Shire River at three gauging stations: Liwonde, 36.5 km

ATCF south of Lake Malawi; Matope, 50 km ATCF south of Liwonde, which is itself 16 and 23 km ATCF north of Nkula A&B and Tedzani run-of-river HPP, respectively; and Chikwawa, 10 km ATCF south of Kapichira Dam. The approach is essential to fill the sporadic discharge time series and thus improve the subsequent assessment of the impact of hydrological extremes on hydropower. It also tests the potential of remotely-sensed data to largely replace ground measurements. Both hydrological modelling steps are carried out at a daily temporal resolution.

A measure of Discharge Deviation, defined as the difference between the daily observed discharge and the long-term mean discharge for the month m in the river at each gauging station g in each day d , (as in equation (1)) is introduced. Here, ΔD represents discharge deviation and \bar{D} is the long-run mean discharge (based on data between 2000 and 2018) in month m (the corresponding month of belonging of day d).

$$\Delta D_d^g = D_d^g - \bar{D}_m^g. \quad (1)$$

The impact of deviations in the discharge on the capacity factor of each individual hydropower plant i and on the total operating capacity in the country is assessed using a beta regression model via maximum likelihood (MLI) (see Materials and Methods SI). The capacity factor is defined as the effective output as a

share of the total installed capacity operating at each day d , as in equation (2). Here, T is the constant adjusted to 24 and 720 for the daily and monthly capacity factors, respectively. The operating capacity is defined based on a broad assessment of online industry and technical reports providing the construction and rehabilitation works at individual schemes over the period of time covered in the analysis (table SI2).

$$\text{HCF}_d^i = \frac{P_d^i}{C_d^i \cdot T}. \quad (2)$$

P is total generation (in MWh), C is operating capacity (in MW), T is time (in h), i defines each hydropower plant and d identifies each day. Metrics for assessing dry and wet extremes (throughout the paper we adopt this definition because there are no standard thresholds to define drought and flood events) is also generated, as in equations (3a) and (3b), which classifies dry and wet extremes as the discharge deviation events below the 5th and above the 95th percentile of the distribution, respectively.

$$\text{dryextreme}_d = \begin{cases} 1, & \text{if } \Delta D_d < 5\text{th percentile } \Delta D_d \\ 0, & \text{otherwise} \end{cases} \quad (3a)$$

$$\text{wetextreme}_d = \begin{cases} 1, & \text{if } \Delta D_d > 95\text{th percentile } \Delta D_d \\ 0, & \text{otherwise} \end{cases}. \quad (3b)$$

To link the supply and demand-side, the relationship between the incidence of extreme hydrological events and the satellite-detected nighttime light radiance [52] both throughout urban areas of Malawi and in each specific province is evaluated through a log-linear OLS (ordinary least squares, the standard statistical regression framework model). In this case, the relationship is assessed at a monthly scale, the native temporal resolution of the VIIRS DNB product. NTL radiance at month m in province p is defined as the sum of radiance in each pixel n within province p , conditional on the pixel having a population density greater than 250 inhabitants km^{-2} (using gridded population data from [41]).

$$\text{NTL}_m^p = \sum_1^n \text{NTL}_n^p. \quad (4)$$

Here, NTL is nighttime light radiance (in $\mu\text{W cm}^{-2} \text{sr}^{-1}$) in month m in each province p . Thus, the total NTL is given by the sum of NTL throughout all provinces p at month m :

$$\text{NTL}_m^{\text{Country}} = \sum_i^p \text{NTL}_m^i. \quad (5)$$

Results

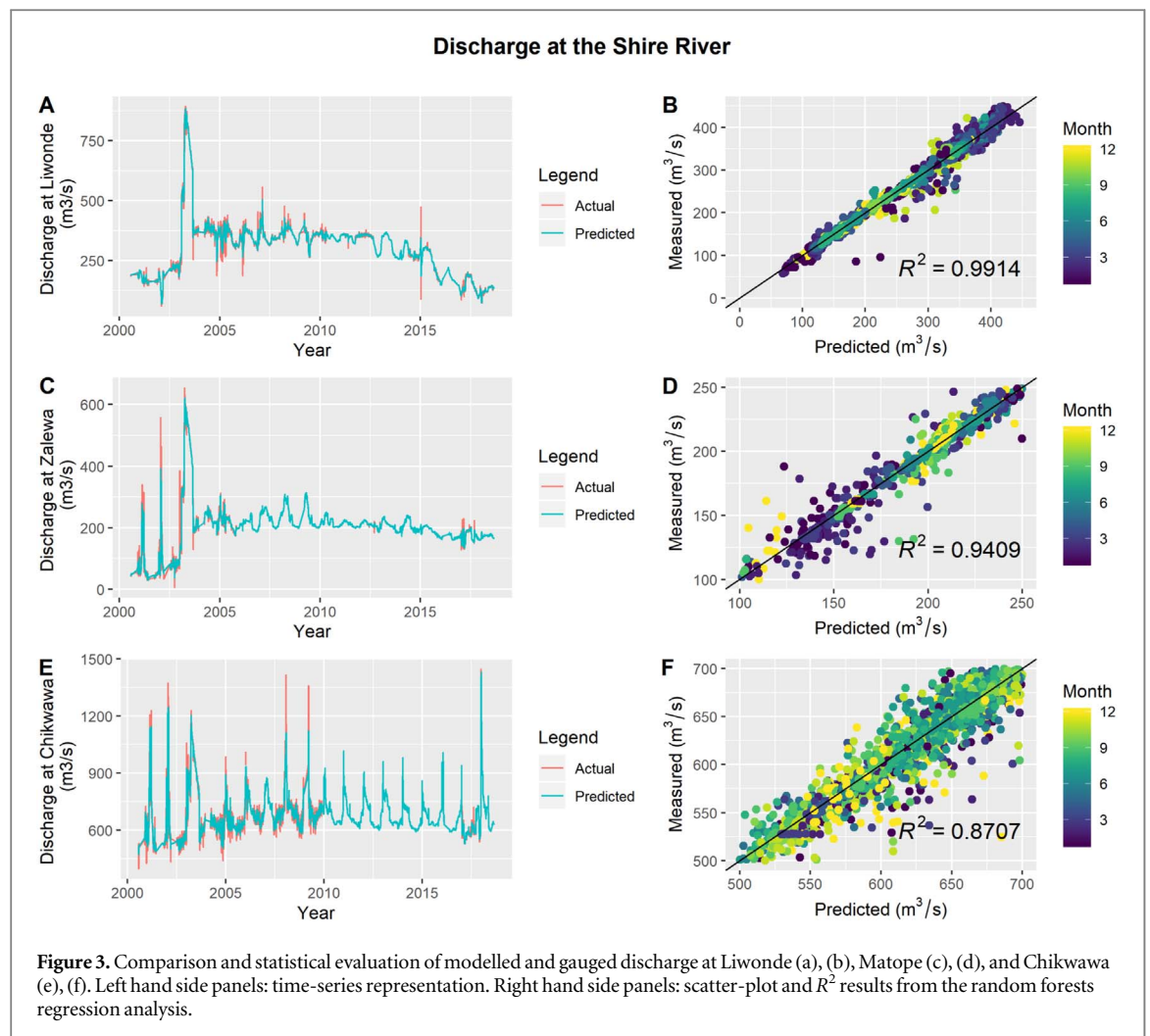
The results of the analysis (detailed in the next paragraphs) highlight that—with a proper modelling framework—open-access data can be leveraged to assess climate-induced power generation fluctuations

and disruptions, as well as implications for electricity use in urban areas. We provide evidence of the strong effectiveness of remotely-sensed, open-data in complementing limited field gauge observations in energy-climate-water nexus modelling. Our empirical estimates of the impact of hydroclimatic extremes for hydropower reliability suggest average declines of 9.4% points (in absolute terms) in the monthly HCF in Malawi during dry extreme events compared to the long-run average value recorded in the same month. Yet, we find no evidence of an adverse impact of wet extreme events on HCFs. Finally, we show that unmet urban demand and outages driven by declines in hydropower generation can be successfully detected via changes in the detected nighttime lights (with average decreases of 31 p.p. in the monthly urban NTL radiance during a dry extreme event). This also reveals substantial heterogeneity in the province-level responses, where both policy and electricity access and use levels play a role in determining exposure.

Hydrological response to climate: predicting the water level at Lake Malawi and concurrent discharge in the Shire River

While Lake Malawi's level measurement series is complete and does not necessitate missing values imputation, we begin by operating a RF regression to evaluate the consistency of the remotely-sensed variables implemented in the next steps. Figure SI1 depicts the predicted versus the satellite-measured lake level at a daily temporal resolution. The predicted values are obtained from the random forests regression model described in the corresponding SI section, while the RF model statistics and diagnostics are reported in table SI4 and figure SI3. The results show that the geospatial open-data have nearly full explanatory power over the daily water level at Lake Malawi as measured by TOPEX/POSEIDON and Jason satellites. In particular, 10-fold cross-validated training accuracy and test accuracy values are both above 0.99. The variable importance metric (discussed in [53] and depicted in figure SI4) shows that the long-term scale SPEI48 index is the most significant predictor, followed by SPEI24 and SPEI06, and by the average temperature over the previous three months and the monthly seasonality. Only a fraction of the total variance remains unexplained (as seen in figure SI1). We thus find evidence of a strong consistency across variables from different source, which encourages their use in the following hydrological modelling.

In a second step, we evaluate the precision with which satellite-derived lake level and the upstream (predicted) gauges can model the discharge (in $\text{m}^3 \text{s}^{-1}$ units) at Liwonde, Matope, and Chikwawa discharge gauge stations, the geographical position of which is reported in figure 1(C). The SPEI index at several scales, precipitations, and temperature are added as covariates to account for precipitations falling directly



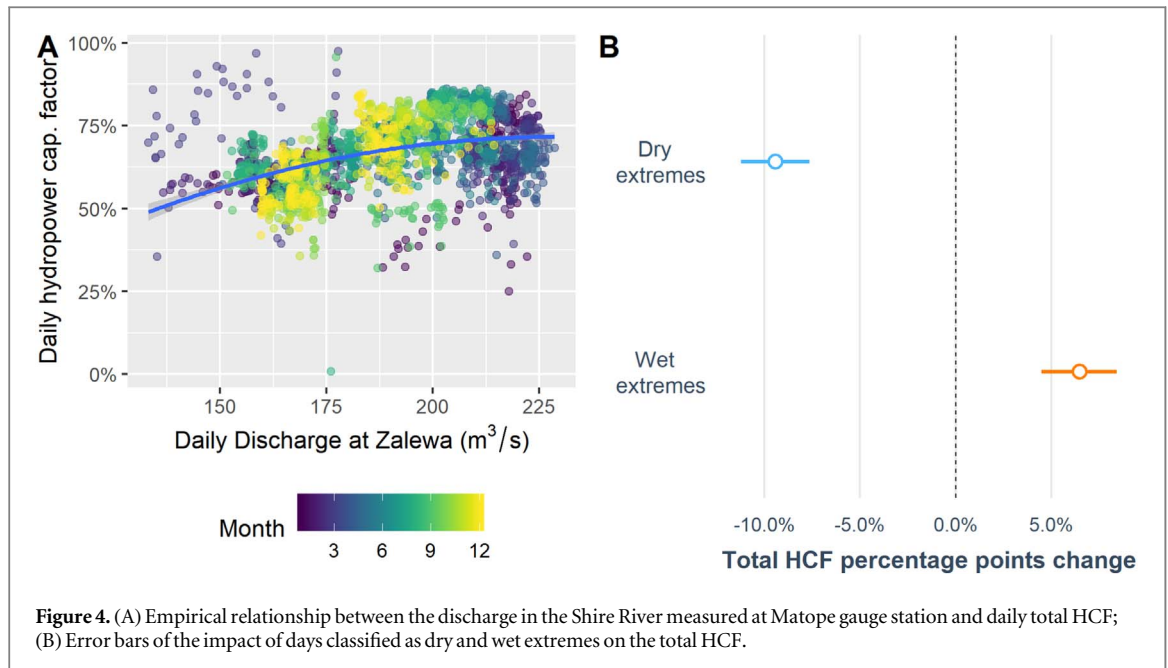
on the riverbed and on tributaries. The random forests regression models (see figures S15 to S110 for parameters and variable importance metrics) yield cross-validated training accuracy and validation accuracy values of 98.7% and 99% at Liwonde, of 97.3% and 94.5% at Matope, and of 90.6% and 89% at Chikwawa. We calculated KGE and NSE metrics for hydrological model validation—which are particularly suitable to cope with extreme values (see Material and Methods SI)—and obtained values of 0.99 (for both KGE and NSE), 0.98 and 0.97 (for KGE and NSE, respectively), and 0.96–0.94 (for KGE and NSE, respectively) at Liwonde, Matope, and Chikwawa, respectively.

This result is of great importance to the purposes of our analysis, because it shows the capability of the model to accurately reproduce sporadic discharge measurements from the field with the exclusive use of satellite and other open geospatial data. In the original time series for the 2000–2018 period examined, 29%, 72% and 61% of daily observations are ungauged at Liwonde, Matope, and Chikwawa, respectively. The RF modelling allows accurately filling these large gaps and thus performing a more precise impact assessment. Figure 3 shows the goodness-of-fit at each gauge

station. The approach is thus found to be appropriate to fill the massive gaps in the gauge time-series. Notably, as seen from figure 3, the model fails to reproduce certain extreme spikes—which could either be instrument measurement errors or extreme events. Thus, our estimates of the impact of extreme events are most safely interpreted as lower-bound values.

Linking discharge deviations and extreme events to hydropower output

Once the complete discharge series is simulated, we calculate metrics of discharge deviations and extreme events (as defined in equations (1)–(3b)) using discharge values at the nearest upstream gauge station to the bulk of the installed run-of-river hydropower capacity, i.e. Matope. We tested a statistical relationship with the hydropower capacity factor, defined as the electricity generated as a share of the maximum technical generation potential in each unit of time. The complete regression specifications are illustrated in equations SI7–8 in the Detailed Materials and Methods SI. As seen from figure SI2, in theoretical terms the most widespread kind of turbines run optimally when the relative discharge lies between the 80%–90% interval, and yet that efficiency is little



responsive to changes in relative discharge up to a level of about 30%, after which efficiency sinks. Figure 4(A) plots the relationship between discharge in the Shire River at the Matope gauge station (located 16 km upstream of Nkula Dam) and the daily total HCF, while figure 4(B) shows the estimated range of effect of days classified as dry and wet extremes on the daily total HCF.

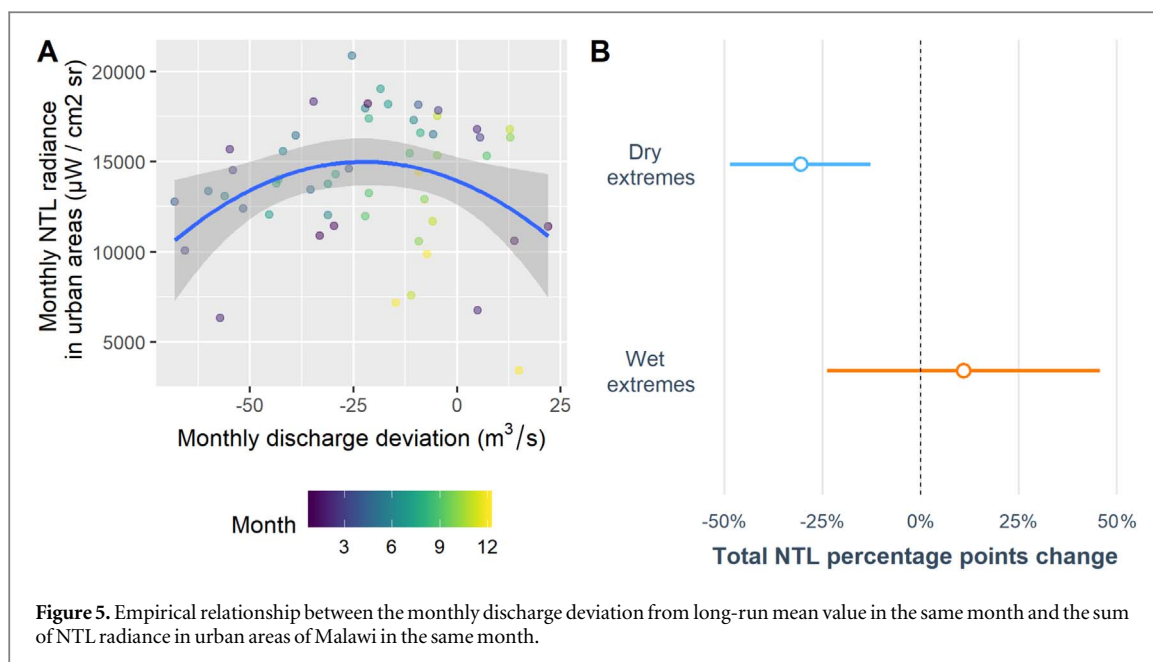
Our regression results (see table SI5) are consistent with the theoretical relationship illustrated by efficiency curves. When considering the model developed independently of month and year, on average, a $1 \text{ m}^3 \text{ s}^{-1}$ decrease in the standard deviation of long-run discharge results in a 0.2 p.p. decline in the total daily hydropower capacity factor ($P < 0.01$). The result reflects the low sensitivity of hydropower turbines to discharge deviation, as long as discharge remains in the normal fluctuation range. Yet, when restricting the measurement of the impact to days classified as dry extremes, we highlight that these determine an average decline by 9.4 p.p. in the total hydropower capacity factor compared to the average value for the same month ($P < 0.01$), as seen from figure 4(B). This result is reported in table SI9. On the other hand, we find no evidence of an adverse effect of wet extreme events, which are in fact associated with slightly higher than average HCFs. (Table SI10.) The impact of dry extremes is also tested for the capacity factors of each individual hydropower plant (to assess the heterogeneity in the vulnerability of each facility). The corresponding regressions results are reported in tables SI6 to SI8.

Measuring final power use responses with nighttime lights

Due to the lack of official sub-yearly and sub-national urban electricity consumption data, we exploit the

observed NTL radiance in urban areas with a density >250 inhabitants km^{-2} at both the country and at the province level as a proxy variable for estimating the effect of extreme hydrological events. A growing stream of literature has shown that nighttime light data are able of capturing spatio-temporal electricity use variation (and in particular outages and disaster-related disruptions) [30, 32, 34, 35, 54]. Malawi is relying largely on hydropower and it has little backup options. At the same time, the country is constrained by the inability to import power from abroad. Thus periods of climate-induced reduced domestic supply determine a reduced consumption potential. From a statistical point of view, both power supply and consumption are endogenously determined by an array of unobserved external factors (such as costs, policies, industrial activity, etc) and they simultaneously affect each other. Yet, river discharge is assumed to be exogenous to power consumption when no storage reservoir is available, as it is the case in Malawi. Specifications consider month fixed-effects to account for seasonality in the regressors, i.e. recurrent seasonal patterns in nighttime light radiance (i.e. electric power use) and hydropower capacity factor.

Figure 5(A) depicts the relationship between the monthly deviation from long-run average discharge in the same month—DDm—and the monthly sum of NTL radiance in urban areas of Malawi. When limiting the assessment to the effect of extreme discharge events on the total NTL radiance of urban areas (figure 5(B)), country-level results (see table SI11) suggest a very significant negative effect. This is quantified at an average value of 31 p.p. in response to a negative shock during the average dry extreme month (with $P < 0.01$), while no significant effect on the detected NTL level is found for wet extremes (table SI12).



A further related question concerns the sub-national heterogeneity in the fluctuation of NTL radiance during months affected by extreme events. Figure 6 plots the effect of an extreme hydrological event on the detected NTL radiance at the different provinces. The results reveal a heterogeneous picture, with some provinces showing declines in the total NTL radiance of more than 150% compared to non dry extreme months, and some other province where no significant effect is found. For those provinces where a statistically significant ($P < 0.05$) effect of extreme events on NTL radiance is found, we observe a moderate positive correlation ($\rho = 0.2$) between the magnitude of the average NTL decline and the local electricity access level reported by the 2015–16 Demographic Health Survey, [55]), i.e. the fraction of households exposed to supply disruptions. This provides evidence of the decline in NTL being associated with the share of households with electricity access in each province.

Yet, the effect is found to be statistically insignificant in the two largest cities of Malawi, i.e. Lilongwe and Blantyre, reflecting the fact that the main centers are less targeted by load-sheddings during supply shortages (see the SI for a description of ESCOM's load shedding policy in different provinces of Malawi) and that some diesel-fired backup capacity is available locally. The strongest (proxied) consumption declines as a result of dry extremes are localised in Mulanje, Salima, and Dedza provinces, located in Central and Southern Malawi, in the proximity of the two largest cities, Lilongwe and Blantyre.

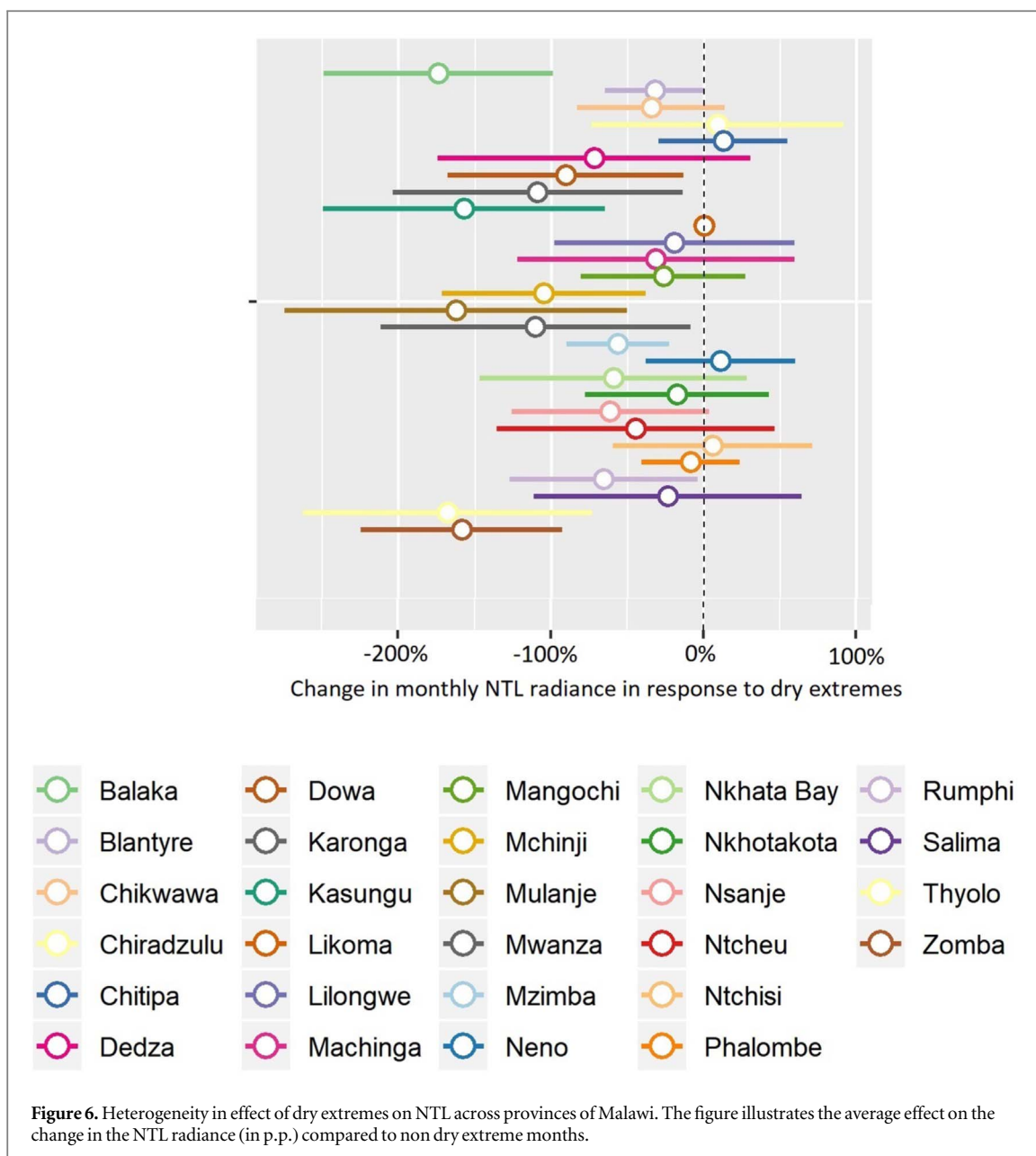
Main limitations and uncertainty

The results presented in this research letter provide a relevant proof-of-concept of how satellite data can be modelled to improve the prediction of different

interrelated trends in the water-climate-energy nexus where data are infrequently gauged or not publicly accessible. Yet, an explicit statement of the limitations and the main sources of uncertainty encapsulated at the different stages of the framework are necessary.

Firstly, the remotely sensed input data—in particular high spatio-temporal resolution climatic observations—are the result of calibration and interpolation techniques and can thus bear an error component. This is of particular relevance in a data-sparse region like that examined in this study, where field validation is likely to be very limited. Secondly, the authors are aware that there is a certain and unavoidable degree of arbitrariness in the classification of extreme events, and this has a direct impact on their measured impact (as discussed in the relevant literature [56, 57]). Finally, the framework introduced and modelled does not encapsulate a hydropower operation model capable to assess human decisions relative to power plants operation and optimise them. The objective of this study is in fact offering a schematic approach to measure and understand the observed water-energy nexus relationships to render them more explicit to scientists and decision-makers. Our framework can serve as a concept for the development or improvement of impact assessment systems through the use of earth observation data. At the same time, the estimated sensitivity parameters (such as that of HCF to the SPEI drought index variance) can support the development and calibration of hydrological and energy-climate-water integrated assessment models.

We encourage further work to elaborate on similar frameworks and adapting them to account for dam operation dynamics in contexts of greater complexity. This could enable an integration into predictive models with projected climate parameters under different global warming scenarios.



Discussion

In developing regions, including SSA, data scarcity is a strong barrier to strategic environmental and socio-economic assessments. Building on a modelling framework exploiting open climate and remotely-sensed data, we have shown that hydropower generation in Malawi is mildly sensible to discharge deviations but it is particularly affected by extremes, which reduce HCFs by an average of 9.4 p.p. compared to the usual level in the same month. We found that this translates into average 31 p.p. decreases in the monthly NTL radiance during extreme hydrological events and it plummets by more than 150% in specific exposed provinces of Malawi. This is a particularly relevant finding given the forecasted intensification of extreme hydrological events in East Africa [40].

In this context, power mix diversification and transboundary electricity transmission infrastructure development represent crucial policy actions to increase supply reliability. Water supply is likely to grow due to both climatic stressors and increasing consumptive demand from the agricultural sector and other human uses. Currently, 548 MW of new hydropower capacity distributed across three dams (more than half of which on the Shire River, as reservoir dams) are expected to be delivered by 2025, while the only non-hydro expansion projects currently announced is the 300 MW coal-fired Khammwamba Power Station, expected for 2022, with coal imported from Mozambique via rail.

This is despite the fact that variable renewable sources of energy (VRE) are widely available in Malawi. Throughout the country, the solar photovoltaics (PV) generation potential is above 1600 kWh/

kWp, with peaks of 1800 kWh/kWp per year [58] which imply significant potential for utility-scale PV parks. A recent study highlighted that currently 60 MW of techno-economic potential are available in the country [59], mostly localised in sites in the southern part of the country [60]. The co-integration of VRE with hydro, in particular when reservoir-based schemes will become operational, offers potential benefit in terms of increasing resilience of the power sector and balancing both renewables intermittency and hydropower output fluctuations, as evidenced in the literature [61–65]. This would also alleviate the need for importing coal from Mozambique, or, possibly, natural gas from Tanzania, and thus guarantee supply self-sufficiency and a cleaner power sector.

Conclusion

In this study, we have shown that a modelling framework exploiting open climate and remotely-sensed data can (i) reconstruct discharge measurements in situations of data scarcity and thus (ii) evaluate the impact of extreme hydro-climatic events on hydropower reliability. In turn, (iii) nighttime lights data can be used to observe power consumption responses to hydrological shocks in urban areas at a monthly scale, underpinning the challenges stemming from a dependency on hydropower.

Acknowledgments

Financial support from the MIUR (Italian Ministry of University and Research) through the Catholic University of Milan and to Fondazione Eni Enrico Mattei is gratefully acknowledged. The authors are grateful to the Ministry of Agriculture, Irrigation and Water Development of Malawi for sharing the Shire River discharge data and to the Electricity Generation Company of Malawi (EGENCO) for providing the hydropower generation time-series at individual facilities. Furthermore, the first author would like to thank the participants to the EGU 2019 General Assembly for their feedback during and after the oral presentation of a preliminary version of this paper. The authors would like to thank Sebastian Sterl and Edward Byers for their comments on the manuscript.

Data availability

The R code for processing the workflow (including Python scripts for interacting with the Google Earth Engine API and processing remotely-sensed data), and the required input data for replication are stored at the following repository: https://github.com/giacfalk/hydropower_remotesensing.

Author contributions

GF processed the satellite data, developed the modelling framework, and wrote the paper; CK processed and provided the field gauge data, contributed to the analysis with local knowledge, and wrote the paper; SCP provided useful input to the hydrological modelling and contributed to writing the paper.

Declaration of interest

Declarations of interest: none.

ORCID iDs

Giacomo Falchetta  <https://orcid.org/0000-0003-2607-2195>

Simon C Parkinson  <https://orcid.org/0000-0002-4753-5198>

References

- [1] Cole M A, Elliott R J, Occhiali G and Strobl E 2018 Power outages and firm performance in sub-Saharan Africa *J. Dev. Econ.* **134** 150–9
- [2] Nduhuura P, Zerga A and Garschagen M 2018 Power outages in Africa—An assessment based on regional power pools *PAUWES Research-2-Practice Forum 2018* (<https://doi.org/10.2139/ssrn.3212006>)
- [3] Andersen T B and Dalgaard C-J 2013 Power outages and economic growth in Africa *Energy Econ.* **38** 19–23
- [4] Oseni M O 2012 Power outages and the costs of unsupplied electricity: evidence from backup generation among firms in Africa *PhD Thesis* Cambridge University
- [5] Kaseke N and Hosking S G 2013 Sub-saharan Africa electricity supply inadequacy: implications *Eastern Africa Soc. Sci. Res. Rev.* **29** 113–32
- [6] Farquharson D, Jaramillo P and Samaras C 2018 Sustainability implications of electricity outages in sub-Saharan Africa *Nat. Sustain.* **1** 589
- [7] Tanner A M and Johnston A L 2017 The impact of rural electric access on deforestation rates *World Dev.* **94** 174–85
- [8] Falchetta G, Gernaat D, Hunt J and Sterl S 2019 Hydropower dependency and climate change in sub-Saharan Africa: a nexus framework and evidence-based review *J. Clean. Prod.* **231** 1399–417
- [9] Cole M A, Elliott R J and Strobl E 2014 Climate change, hydro-dependency, and the African Dam boom *World Dev.* **60** 84–98
- [10] Karekezi S, Kimani J, Onguru O and Kithyoma W 2012 Energy Security and Adaptation to Climate Change in East Africa and the Horn of Africa: large scale Hydropower versus decentralized renewables *AFREPREN/FWD Occasional Papers Series*
- [11] Gannon K E *et al* 2018 Business experience of floods and drought-related water and electricity supply disruption in three cities in sub-Saharan Africa during the 2015/2016 El Niño *Glob. Sustain.* **1** E14
- [12] Larsen M *et al* 2019 Challenges of data availability: analysing the water-energy nexus in electricity generation *Energy Strategy Rev.* **26** 100426
- [13] Sridharan V *et al* 2019 Resilience of the Eastern African electricity sector to climate driven changes in hydropower generation *Nat. Commun.* **10** 302
- [14] Van Vliet M T, Wiberg D, Leduc S and Riahi K 2016 Power-generation system vulnerability and adaptation to changes in climate and water resources *Nat. Clim. Change* **6** 375

- [15] van Vliet M T H *et al* 2016 Multi-model assessment of global hydropower and cooling water discharge potential under climate change *Glob. Environ. Change* **40** 156–70
- [16] Cervigni R, Liden R, Neumann J E and Strzepek K M 2015 *Enhancing the Climate Resilience of Africa's Infrastructure* (Washington, DC: World Bank) (<https://doi.org/10.1596/978-1-4648-0466-3>)
- [17] Turner S W D, Ng J Y and Galelli S 2017 Examining global electricity supply vulnerability to climate change using a high-fidelity hydropower dam model *Sci. Total Environ.* **590–591** 663–75
- [18] Hamududu B and Killingtveit A 2012 Assessing climate change impacts on global hydropower *Energies* **5** 305–22
- [19] Döll P and Schmied H M 2012 How is the impact of climate change on river flow regimes related to the impact on mean annual runoff? A global-scale analysis *Environ. Res. Lett.* **7** 014037
- [20] van Vliet M T, Sheffield J, Wiberg D and Wood E F 2016 Impacts of recent drought and warm years on water resources and electricity supply worldwide *Environ. Res. Lett.* **11** 124021
- [21] Kull D 2006 Connections between recent water level drops in Lake Victoria, dam operations and drought
- [22] Bekoe E O and Logah F 2016 The impact of droughts and climate change on electricity generation in Ghana *Meteorology and Energy Security: Simulations, Projections, and Management* (New York: Apple Academic Press) pp 163–78
- [23] Conway D *et al* 2019 The need for bottom-up assessments of climate risks and adaptation in climate-sensitive regions *Nat. Clim. Change* **9** 503–11
- [24] Leibrand A, Thomas A, Sadoff N and Maslak T 2019 Using earth observations to help developing countries improve access to reliable, sustainable and modern energy *Frontiers Environ. Sci.* **7** 123
- [25] Gleason C J, Wada Y and Wang J 2018 A hybrid of optical remote sensing and hydrological modeling improves water balance estimation *J. Adv. Modeling Earth Syst.* **10** 2–17
- [26] EIA 2019 International Energy Statistics (www.eia.gov/beta/international/data/browser/)
- [27] Gershenson D, Roher B and Lerner A 2019 Predictive model for accurate electrical grid mapping (<https://github.com/facebookresearch/many-to-many-dijkstra>)
- [28] USDA 2018 Satellite radar altimetry: global reservoir and lake elevation database (Accessed: 15 February 2018) (https://ipad.fas.usda.gov/cropeplorer/global_reservoir/)
- [29] Elvidge C D, Baugh K, Zhizhin M, Hsu F C and Ghosh T 2017 VIIRS night-time lights *Int. J. Remote Sens.* **38** 5860–79
- [30] Stokes E C *et al* 2019 Urban applications of NASA's black marble product suite 2019 *Joint Urban Remote Sensing Event (JURSE)* (Piscataway, NJ: IEEE) pp 1–4
- [31] Xiao H *et al* 2018 Spatio-temporal simulation of energy consumption in China's provinces based on satellite night-time light data *Appl. Energy* **231** 1070–8
- [32] Hu T and Huang X 2019 A novel locally adaptive method for modeling the spatiotemporal dynamics of global electric power consumption based on DMSP-OLS nighttime stable light data *Appl. Energy* **240** 778–92
- [33] Shi K *et al* 2016 Detecting spatiotemporal dynamics of global electric power consumption using DMSP-OLS nighttime stable light data *Appl. Energy* **184** 450–63
- [34] Wang Z *et al* 2018 Monitoring disaster-related power outages using NASA black marble nighttime light product *ISPRS Int. Arch. Photogramm. Remote Sens. Spat. Inf. Sci.* **XLII-3** 1853–6
- [35] Román M O *et al* 2019 Satellite-based assessment of electricity restoration efforts in Puerto Rico after Hurricane Maria *PLoS One* **14** e0218883
- [36] Beguería S and Vicente-Serrano S M 2017 SPEI: Calculation of the Standardised Precipitation-Evapotranspiration Index (Accessed: 15 May 2018) (<https://github.com/edidigui/DROUGHGT-SPEI>)
- [37] Funk C *et al* 2015 The climate hazards infrared precipitation with stations—a new environmental record for monitoring extremes *Sci. Data* **2** 150066
- [38] Wan Z, Hook S and Hulley G 2015 MOD11A2 MODIS/Terra land surface temperature/emissivity 8-Day L3 global 1 km SIN grid V006 NASA EOSDIS Land Processes DAAC vol 10
- [39] Bolten J and Crow W 2012 Improved prediction of quasi-global vegetation conditions using remotely-sensed surface soil moisture *Geophys. Res. Lett.* **39** L19406
- [40] Conway D, Dalin C, Landman W A and Osborn T J 2017 Hydropower plans in eastern and southern Africa increase risk of concurrent climate-related electricity supply disruption *Nat. Energy* **2** 946
- [41] Dobson J E, Bright E A, Coleman P R, Durfee R C and Worley B A 2000 LandScan: a global population database for estimating populations at risk *Photogramm. Eng. Remote Sens.* **66** 849–57
- [42] Pekel J-F, Cottam A, Gorelick N and Belward A S 2016 High-resolution mapping of global surface water and its long-term changes *Nature* **540** 418
- [43] World Resources Institute 2006 WRI's Major Watersheds of The World (<https://datacatalog.worldbank.org/dataset/major-river-basins-world>)
- [44] Makwinja R, Phiri T, Kosamu I B and Kaonga C C 2017 Application of stochastic models in predicting Lake Malawi water levels *Int. J. Water Resources Environ. Eng.* **9** 191–200
- [45] Kaunda P 2016 Investigating the impacts of climate change on the levels of lake Malawi *PhD Thesis* University of Nairobi
- [46] Jury M R 2014 Malawi's shire river fluctuations and climate *J. Hydrometeorol.* **15** 2039–49
- [47] Warnatzsch E A and Reay D S 2019 Temperature and precipitation change in Malawi: evaluation of CORDEX-Africa climate simulations for climate change impact assessments and adaptation planning *Sci. Total Environ.* **654** 378–92
- [48] G Kumambala P and Ervine A 2010 Water balance model of Lake Malawi and its sensitivity to climate change *Open Hydrol. J.* **4** 152–62
- [49] Kaunda C S and Mtalo F 2013 Impacts of environmental degradation and climate change on electricity generation in Malawi *Int. J. Energy Environ.* **4** 481–96
- [50] Bhave A, Bulcock L, Dessai S, Jewitt G and Conway D 2018 Malawi's vulnerability to threshold behaviour of Lake Malawi: a lake-basin modelling study for informing adaptation decision making under uncertainty *EGU General Assembly Conf. Abstracts* vol 20, p 14755
- [51] Kuhn M *et al* 2008 Building predictive models in R using the caret package *J. Stat. Software* **28** 1–26
- [52] Román M O *et al* 2018 NASA's Black Marble nighttime lights product suite *Remote Sens. Environ.* **210** 113–43
- [53] Archer K J and Kimes R V 2008 Empirical characterization of random forest variable importance measures *Comput. Stat. Data Anal.* **52** 2249–60
- [54] Jasiński T 2019 Modeling electricity consumption using nighttime light images and artificial neural networks *Energy* **179** 831–42
- [55] USAID 2009 DHS STATcompiler (www.statcompiler.com)
- [56] Lloyd-Hughes B 2014 The impracticality of a universal drought definition *Theor. Appl. Climatol.* **117** 607–11
- [57] Wilhite D A and Glantz M H 1985 Understanding: the drought phenomenon: the role of definitions *Water Int.* **10** 111–20
- [58] World Bank 2018 Solar Resource and PV Potential of Malawi: Solar Resource Atlas *ESMAP Paper 133649* World Bank Group (<http://documents.worldbank.org/curated/en/974121547193692233/Solar-Resource-and-PV-Potential-of-Malawi-Solar-Resource-Atlas>)
- [59] Sundu Y 2017 Should Malawi look to wind for energy solution? The Nation Online (<https://mwnation.com/malawi-look-wind-energy-solution/>)
- [60] DTU Technical University of Denmark. Global Wind Atlas 2018 Funded by Danish Energy Agency EUDP 11-II, Globalt Vind Atlas J.nr. 64011-0347 (<https://globalwindatlas.info>)
- [61] Francois B *et al* 2014 Integrating hydropower and intermittent climate-related renewable energies: a call for hydrology *Hydrol. Process.* **28** 5465–8

- [62] Sterl S, Liersch S, Koch H, Lipzig N P M V and Thiery W 2018 A new approach for assessing synergies of solar and wind power: implications for west Africa *Environ. Res. Lett.* **13** 094009
- [63] Rogeau A, Girard R and Kariniotakis G 2017 A generic gis-based method for small pumped hydro energy storage (Phes) potential evaluation at large scale *Appl. Energy* **197** 241–53
- [64] Sterl S, Van Lipzig N, Van Griensven A and Thiery W 2019 Flexible hydro-solar-wind mixes for reliable power supply in west Africa *Geophysical Research Abstracts* **vol 21** EGU2019-148-2
- [65] Barasa M, Bogdanov D, Oyewo A S and Breyer C 2018 A cost optimal resolution for Sub-Saharan Africa powered by 100% renewables in 2030 *Renew. Sustain. Energy Rev.* **92** 440–57