

ACCEPTED MANUSCRIPT • OPEN ACCESS

## The energy-population dividend: Evidence from energy-specific population projections

To cite this article before publication: Camille Belmin *et al* 2024 *Environ. Res. Lett.* in press <https://doi.org/10.1088/1748-9326/ad9850>

### Manuscript version: Accepted Manuscript

Accepted Manuscript is “the version of the article accepted for publication including all changes made as a result of the peer review process, and which may also include the addition to the article by IOP Publishing of a header, an article ID, a cover sheet and/or an ‘Accepted Manuscript’ watermark, but excluding any other editing, typesetting or other changes made by IOP Publishing and/or its licensors”

This Accepted Manuscript is © 2024 The Author(s). Published by IOP Publishing Ltd.



As the Version of Record of this article is going to be / has been published on a gold open access basis under a CC BY 4.0 licence, this Accepted Manuscript is available for reuse under a CC BY 4.0 licence immediately.

Everyone is permitted to use all or part of the original content in this article, provided that they adhere to all the terms of the licence <https://creativecommons.org/licenses/by/4.0>

Although reasonable endeavours have been taken to obtain all necessary permissions from third parties to include their copyrighted content within this article, their full citation and copyright line may not be present in this Accepted Manuscript version. Before using any content from this article, please refer to the Version of Record on IOPscience once published for full citation and copyright details, as permissions may be required. All third party content is fully copyright protected and is not published on a gold open access basis under a CC BY licence, unless that is specifically stated in the figure caption in the Version of Record.

View the [article online](#) for updates and enhancements.

# The energy-population dividend: Evidence from energy-specific population projections

Camille Belmin<sup>123\*</sup>

Peter-Paul Pichler<sup>1</sup>

Guillaume Marois<sup>35</sup>

Shonali Pachauri<sup>4</sup>

Helga Weisz<sup>12</sup>

<sup>1</sup> Social Metabolism and Impacts, Potsdam Institute for Climate Impact Research (PIK), Member of the Leibniz Association, Germany

<sup>2</sup> Department of Cultural History and Theory and Department of Social Sciences, Humboldt University Berlin, Germany

<sup>3</sup> Wittgenstein Centre for Demography and Global Human Capital (University of Vienna, IIASA, VID/ÖAW), International Institute for Applied Systems Analysis, Austria

<sup>4</sup> International Institute for Applied Systems Analysis, Wittgenstein Center (IIASA, OeAW, University of Vienna), Austria

<sup>5</sup> Asian Demographic Research Institute of the Shanghai University, China

\*corresponding author (belmin@iiasa.ac.at)

## Abstract

In a climate- constrained world, understanding the energy required to achieve universal access to modern energy is critical. This requires making assumptions on future population trajectories. Although access to modern energy can affect population dynamics, this feedback has not yet been accounted for in demographic models. Access to modern energy leads to fertility declines as it reduces child mortality, improves health, increases women's access to information, education and employment. In this paper we present a demographic model that endogenizes the effect of increased access to modern energy on population dynamics and estimates the size of this effect on total final energy use by households for the case of Zambia. To do so, we built a microsimulation model to project future population size and composition, accounting for how fertility depends on access to modern energy and education. We used these population projections to then estimate household energy demand of the Zambian population until 2070, under different scenarios. We found that in 2070, while electricity consumption is higher in a universal access scenario compared to a baseline scenario, total energy demand is 29% lower, partly due to a strong decline in the use of inefficient traditional cooking fuels. We also found that reduced population growth due to universal energy access contributes to lowering the energy demand by 56% by 2050, compared to a more limited expansion in energy access, and this contribution

1  
2  
3 increases over time. Although the challenge of achieving universal access to modern energy  
4 seems daunting, our results suggest that this could have co-benefits with achieving climate  
5 goals. Our study also reveals that accounting for the energy-population dividend in energy  
6 models will scale down the currently assumed energy needs to ensure a decent life for all.  
7  
8  
9  
10  
11  
12  
13  
14  
15  
16  
17  
18  
19  
20  
21  
22  
23  
24  
25  
26  
27  
28  
29  
30  
31  
32  
33  
34  
35  
36  
37  
38  
39  
40  
41  
42  
43  
44  
45  
46  
47  
48  
49  
50  
51  
52  
53  
54  
55  
56  
57  
58  
59  
60

## 1 Introduction

Access to modern energy provides services that are essential for meeting basic human needs (GEA 2012; McCollum et al. 2018). Despite significant progress in global energy access, approximately 675 million people still lacked access to electricity and 2.3 billion people lacked access to clean cooking energy in 2021 (IEA et al. 2023). Projections for achieving universal energy access, especially for fast growing populations, are highly dependent on future demographics. Traditionally, most models used for these projections rely on exogenous population data from independent sources such as the UN (UNFPA 2019), or the Shared Socio-economic Pathways (SSP) (KC and Lutz 2017; KC et al. 2024).

However, there is growing evidence that energy access plays an important role in fertility decline and thereby population dynamics. Studies have shown a link between access to modern energy and fertility decline in low- to middle-income countries (Grimm, Sparrow, and Tasciotti 2015 ; Grogan 2016 ; Potter, Schmertmann, and Cavenaghi 2002 ; Peters and Vance 2010; Fujii and Shonchoy 2020; Harbison and Robinson 1985; Belmin et al. 2022). This decline has been attributed to several factors, including less time spent by girls and women on household chores (Das et al. 2020; Wickramasinghe 2011; OXFAM 2017), lower child mortality (Adaji et al. 2019; Ezzati 2005), improved health outcomes (Das et al. 2020; I. E. A. IEA 2016; WHO 2014), increased access to information (OXFAM 2017; Das et al. 2020) and education (Winther et al. 2017). Given this interplay, accurate modeling of energy access scenarios requires the endogenization of demographic trends. Neglecting this connection might lead to inaccurate energy demand projections, potentially causing misallocation of resources in the pursuit of universal energy access.

Detailed econometric studies for individual countries have quantified the impact of expanded electricity access on fertility (Grimm, Sparrow, and Tasciotti 2015 ; Grogan 2016 ; Potter, Schmertmann, and Cavenaghi 2002). A recent study by Belmin et al. (2022) examined the impact of access to electricity and modern cooking fuels in 44 developing countries. It found that achieving universal access to electricity by 2040, coupled with increasing educational attainment, would result in a total fertility rate 19% lower than in a business-as-usual scenario. The study also demonstrated that the negative effect of energy access on fertility persists even after controlling for education, GDP and other predictors of fertility decline (Belmin et al. 2022).

An early study used the historical correlation between average per capita energy use and population growth in different world regions to model future population size and energy demand (Sheffield 1998). Such an approach could be taken even further by considering critical components of population projections such as age or education. Population scenarios developed within the SSP framework provide valuable population projections that take into account assumptions about future trends in educational attainment (KC and Lutz 2017; KC et al. 2024). Similarly, we suggest that these scenarios would benefit further by taking into account the expansion of energy access. Here, we present a novel, open-source microsimulation demographic model that explicitly incorporates the effects of access to modern energy on fertility. We use this model to analyze four stylized energy transition scenarios, ranging from moderate and partial transitions to rapid and universal adoption of modern energy. Similar to Sheffield (1998), our goal is to quantify the

1  
2  
3 difference in population size and corresponding energy demand attributable to the energy-  
4 fertility effect. However, unlike Sheffield (1998), our approach avoids relying on aggregate  
5 region-wide correlations. Instead, we develop an explicit microsimulation model to capture  
6 individual-level dynamics and the complex interactions between energy access and  
7 fertility.  
8  
9

10 We chose Zambia as a case study because of its demographic characteristics, the status of  
11 access to modern energy in the country, as well as the availability of data. Zambia is a high-  
12 fertility country with most of its population living in rural areas. In 2022 the Total Fertility  
13 Rate (TFR), which can be interpreted as the average number of children per women, was  
14 4.24 (UNFPA 2022). The patterns of energy access vary greatly from urban to rural areas.  
15 In 2017, 75% of the urban population had access to electricity, while only one tenth of the  
16 rural population had access to electricity (Luzi et al. 2019). Zambia's population is highly  
17 dependent on charcoal for cooking, particularly in urban areas where it is used by 60.7% of  
18 the population. In rural areas, firewood is used by most households (83.6%), followed by  
19 charcoal (14.2%). Electricity is the main type of modern energy used for cooking in Zambia  
20 (32.5% of urban and 1.9% of rural households use electricity as a main cooking fuel) (Luzi  
21 et al. 2019). The heavy dependence of Zambia's electricity sector on hydro-power, also  
22 makes electricity supply vulnerable to climate variability and droughts, and has caused  
23 electricity outages in 2012 and subsequently, a decline in the use of electricity for cooking  
24 (Samboko et al. 2016).  
25  
26  
27  
28

## 29 **2 Methods and data**

### 30 **2.1 Overview**

31  
32  
33  
34 The modeling framework has two components: (i) a microsimulation model of population  
35 projection that determines at each time step, the size and the distribution of the population  
36 by place of residence (rural or urban), education level, access to electricity and modern  
37 cooking fuels, and (ii) an energy calculator that estimates the population's energy demand  
38 using disaggregated data on per capita energy consumption and the population projections  
39 from the MSM (Figure 1). The analysis is carried out for four scenarios. Each scenario is  
40 composed of assumptions on mortality, educational attainment, energy access and  
41 urbanization pathways created using the SSP framework (Table 2). The model was  
42 implemented in R and operates at the individual level. The validation of the model is  
43 presented in the *Validation* section of the Supplementary Information (Supplementary  
44 Figure 3-5).  
45  
46  
47  
48  
49  
50  
51  
52  
53  
54  
55  
56  
57  
58  
59  
60

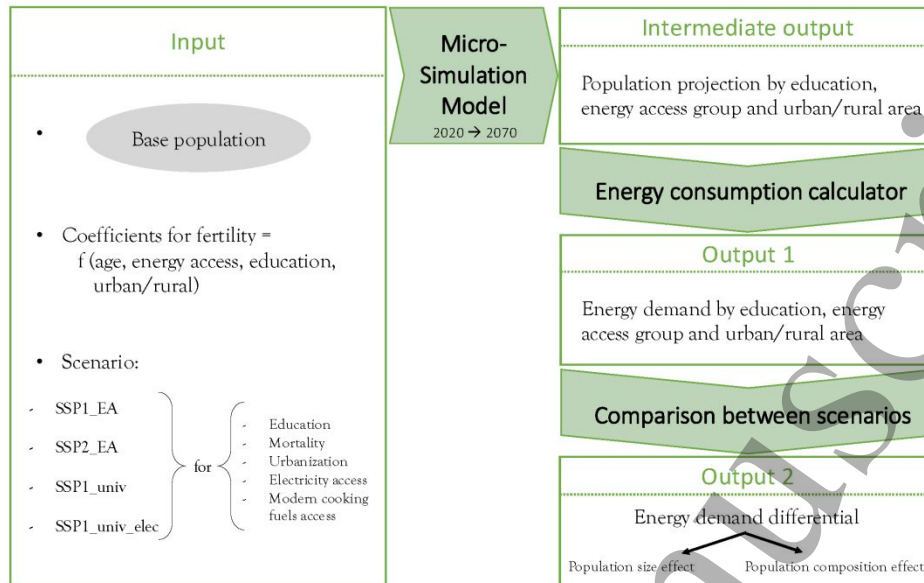


Figure 1: Overview of the modeling framework in two steps: the microsimulation model of population projection and the energy calculator.

## 2.2 Microsimulation model of population projection

We developed a dynamic microsimulation model (MSM) to project population trends from 2020 to 2070, using five-year time steps. The base population of the model is set to 2015, with scenario data starting in the same year. The first year of simulation results, 2020, represents the first step in the projection. The MSM simulates individual life events such as birth, death, access to electricity and modern cooking fuels, educational attainment, and urbanization. Each individual is treated independently in the model, and events are simulated using Monte Carlo methods. For each potential event for each individual, a random number is drawn from a uniform distribution between 0 and 1. This number is then compared to the predefined probability of the event. If the random number is lower than the probability, then the event will occur for that individual.

The probability of surviving, moving to an urban area, transitioning to a higher education level, and getting access to modern energy are directly derived from the input data (see Section 2.2.3). In contrast, the probability that a woman gives birth is derived endogenously at each time step, and depends on her age, access to modern energy, level of education, and whether she lives in a rural or urban area and the year (see Figure 1 and Table 1). Microsimulation models allow to easily run population projections where demographic rates depend on a large number of states (Van Imhoff and Post 1998). Here, fertility depends on five dimensions. With a traditional multi-state cohort component model of population projection, this large number of dimensions would make the estimation of fertility unmanageable.



### 2.2.1 Base population

We used the 2018 Demographic and Health Survey data of Zambia to construct the base population. More specifically, we used the *Person Recode* of the DHS data (ICF 2004), in which all members of interviewed households are included in the sample. This allowed for obtaining data on individuals of both sex and all ages. From the DHS data we extracted the following variables: age, sex, number of education years, whether the individual lives in a rural or urban area, whether they have access to electricity and modern cooking fuels, and for children under 18, the number of years of education of the mother and finally the individual survey weight. From the variable number of education years, we created six categorical variables: *No education*, *Incomplete primary education*, *Completed primary education*, *Lower secondary education*, *Upper secondary education*, and *Post secondary education*). Observations with missing values on these variables were excluded, which resulted in a final sample size of 57960 individuals. To ensure representativeness of the base population in terms of education, we calibrated the base population using age-specific, education-specific population distribution data for the year 2015 from the Wittgenstein Center for Demography and Human Capital (WIC) (Lutz et al. 2018) (Supplementary Method 1).

### 2.2.2 Fertility

In our model, the probability that a woman will give birth is endogenously determined at each time step and for each woman of fertile age (between 15 and 49 years old). We used a logistic regression to estimate the parameters allowing us to predict the probability for a woman to give birth, depending on her age group (five-year), level of education, whether her household has access to electricity, to modern cooking fuels and whether she lives in a rural or urban area. We chose this set of independent variables as they have been shown to be the most influential in explaining fertility variations (Lutz, Butz, and Samir 2014 ; Belmin et al. 2022 ; Lerch 2017 ; Adhikari, Lutz, and KC 2023). The dependent variable is whether the women gave birth in the last year. The coefficients from the logistic regression model were estimated using a pooled sample of four DHS surveys for Zambia (2002, 2007, 2013 and 2018), resulting in a sample size of 87332. We provide a detailed description of the data and method used for this regression in Supplementary Method 2.

The estimated coefficients for any level of education other than *No education*, having access to electricity, having access to modern cooking fuels, and living in an urban area are all negative and significant, which suggests that these variables might have a strong effect on the probability of giving birth (Table 1). The age categories are also all significant, with age groups 20-24 and 25-29 having the strongest positive effect on the probability of giving birth, relative to the reference age group of 15-19. Age also interacts with access to energy in a significant way. In particular, the coefficients for access to both electricity and modern cooking fuels are particularly strong for the reference age group, and the coefficient for electricity is also strong for the age group 20-24.

Table 1: Results of a logistic regression model that predicts the probability for a woman aged 15-49 to have given birth in the past year.

	Gave birth in the past year (Yes/No)
Age group 20-24	0.829 <sup>***</sup> (0.031)
Age group 25-29	0.718 <sup>***</sup> (0.032)
Age group 30-34	0.524 <sup>***</sup> (0.035)
Age group 35-39	0.209 <sup>***</sup> (0.038)
Age group 40-44	-0.554 <sup>***</sup> (0.050)
Age group 45-49	-2.332 <sup>***</sup> (0.113)
Educ group: Incomplete primary	-0.120 <sup>***</sup> (0.031)
Educ group: Primary	-0.180 <sup>***</sup> (0.035)
Educ group: Lower secondary	-0.374 <sup>***</sup> (0.036)
Educ group: Upper secondary	-0.576 <sup>***</sup> (0.043)
Educ group: Post secondary	-0.581 <sup>***</sup> (0.065)
Having access to electricity	-0.516 <sup>***</sup> (0.073)
Having access to modern cooking fuels	-0.538 <sup>***</sup> (0.119)
Living in urban area	-0.287 <sup>***</sup> (0.023)
Year	-0.009 <sup>***</sup> (0.002)
Age group 20-24 X Elec	0.218 <sup>**</sup> (0.090)
Age group 25-29 X Elec	0.261 <sup>***</sup> (0.094)
Age group 30-34 X Elec	0.401 <sup>***</sup> (0.099)
Age group 35-39 X Elec	0.015 (0.119)
Age group 40-44 X Elec	-0.465 <sup>**</sup> (0.207)
Age group 45-49 X Elec	0.081 (0.431)
Age group 20-24 X MCF	0.227 (0.145)
Age group 25-29 X MCF	0.517 <sup>***</sup> (0.145)
Age group 30-34 X MCF	0.591 <sup>***</sup> (0.152)
Age group 35-39 X MCF	0.729 <sup>***</sup> (0.182)
Age group 40-44 X MCF	0.885 <sup>***</sup> (0.294)
Age group 45-49 X MCF	-10.174 (64.533)
Intercept / Reference category	16.454 <sup>***</sup> (3.205)
N	87332
Log Likelihood	-37717.040
AIC	75490.080

*P-values: 0.1 > \* > 0.05 > \*\* > 0.01 > \*\*\**



Table 2: Description of scenario components and narrative.

Scenario name	Narrative	Education	Electricity access	Modern cooking fuel access	Urbanization	Displacement of all traditional fuels by 2040
<b>SSP1_EA</b>	Fast development in education and urbanization. Energy access expands, in particular in urban areas. However, universal energy access is not reached by 2040.	Fast (SSP1-IIASA)	Intermediate (SSP1-Poblete Cazenave et al. 2021)	Intermediate (SSP1-Poblete Cazenave et al. 2021)	Fast (SSP1-IIASA)	No
<b>SSP2_EA</b>	Slow development in education and energy access, especially in rural areas. Intermediate urbanization.	Slow (SSP2-IIASA)	Slow (SSP2-Poblete Cazenave et al. 2021)	Slow (SSP2-Poblete Cazenave et al. 2021)	Slow (SSP2-IIASA)	No
<b>SSP1_univ</b>	Fast development in education and urbanization. Universal energy access is reached by 2040. However, despite fast electrification, households continue to use some traditional energy when they get access to modern energy (fuel stacking),	Fast (SSP1-IIASA)	Fast (Universal access by 2040)	Fast (Universal access by 2040)	Fast (SSP1-IIASA)	No
<b>SSP1_univ_elec</b>	Fast development in education and urbanization. Universal energy access is reached by 2040. Contrarily to SSP1_univ, all traditional energy for cooking is displaced by electricity, coherently with the fast electrification happening simultaneously.	Fast (SSP1-IIASA)	Fast (Universal access by 2040)	Fast (Universal access by 2040)	Fast (SSP1-IIASA)	Yes

### 2.2.3 Scenarios

We created four scenarios that explore different assumptions about mortality, educational attainment, urbanization, and access to modern energy (Table 2 and Figure 2). These scenarios are based on the SSP framework (Riahi et al. 2017), which is widely used in energy and climate mitigation modeling. Among the different SSP scenario assumptions, we used SSP1, which corresponds to a world shifting to a more sustainable pathway with low mitigation and adaptation challenges, and SSP2, which represents a middle-of-the-road scenario. The assumptions about future mortality, educational attainment, urbanization, and access to modern energy come from existing pathways found in the literature that follow the SSP framework. In this paper, we do not consider international migration and domestic migration is reflected in the different urbanization projections for SSP1 and SSP2.

We defined modern energy for cooking as any energy derived from electricity, liquefied petroleum gas (LPG), natural gas and biogas. All forms of traditional biomass are excluded, namely firewood, charcoal, agricultural crops, animal dung as well as coal and kerosene. Although coal and kerosene do not need to be collected, we excluded these from the basket of modern fuels because of their negative health effects.

The first scenario is called *SSP1\_EA* (SSP1 with Energy Access) and represents a future with good progress in development, including progress in energy access, especially in urban areas. The second scenario, *SSP2\_EA* (SSP2 with energy access), represents a mid-road scenario with limited progress in development and slow progress in energy access. The third scenario, *SSP1\_univ*, like *SSP1\_EA*, represents a trajectory with good progress in development, but additionally assumes universal access to electricity and modern cooking fuels by 2040. The fourth and final scenario, *SSP1\_univ\_elec*, is based on *SSP1\_univ*, but in addition assumes that traditional fuels are completely replaced by electricity (see sub-Section *Scenario for completely electrifying clean cooking*). The assumptions used to construct these scenarios are described in detail below.

### Mortality, education and urbanization assumptions

The mortality, and educational attainment data were taken directly from the WIC open data repository (Lutz et al. 2018). The WIC has developed a set of population dynamics and characteristics scenarios that are consistent with the SSP narratives. We also used urbanization assumptions that follow the SSP framework from the study of Jiang and O'Neill (2017).

A few details are important to note about the mortality and education assumptions. The mortality assumptions are provided by the WIC as survival probabilities. For each scenario, this probability depends on the age group and education level of the individual at the beginning of the period. Following Marois and KC (2021), we assume that the probability of survival for children under the age of 15 depends on the mother's education level (Fuchs, Pamuk, and Lutz 2010). We provide further details on the education assumptions in Supplementary Method 3.

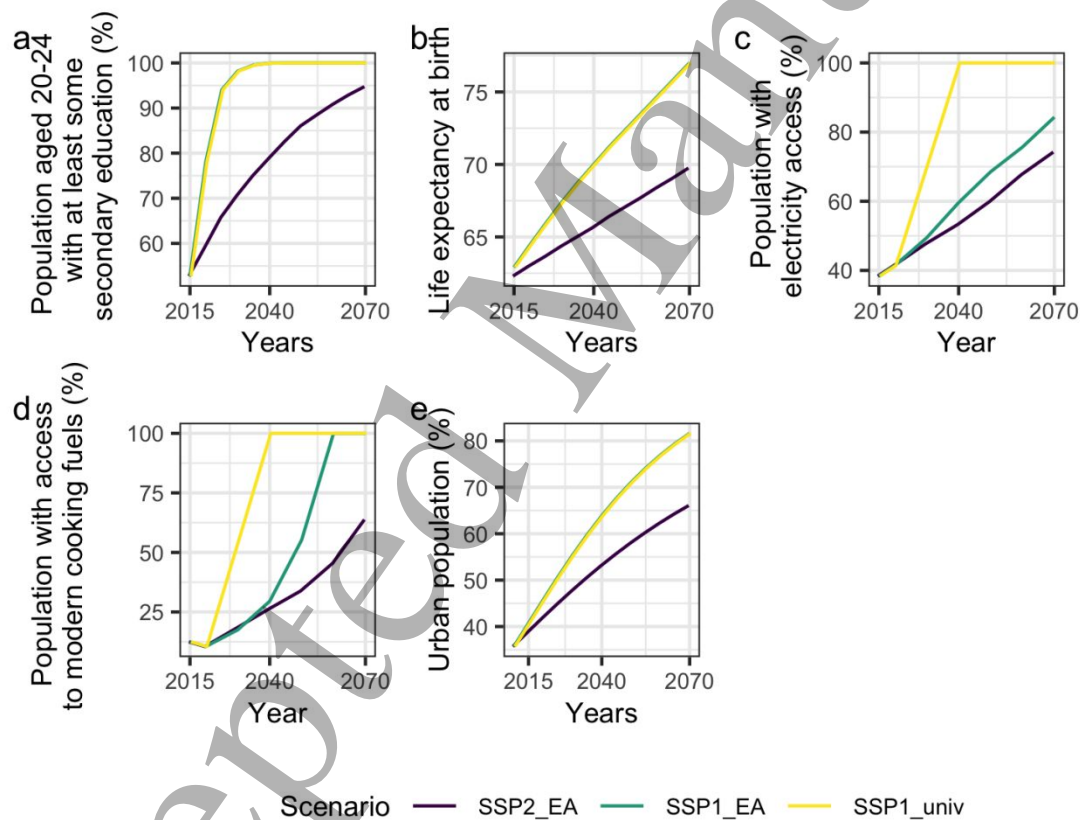


Figure 2: Background changes in education (a), life expectancy (b), access to electricity (c), access to modern cooking fuels (d) and urbanization (e) as input of the microsimulation model. In the case of education, life expectancy, and urbanization, the path for the SSP1\_univ scenario is the same as for SSP1\_EA, which is why the yellow and green lines overlap in plots a, b, and e (but they were slightly dodged for visibility). On plot c and d, the distinction between rural and urban is not represented but it is taken into account in the model.

1  
2  
3  
4  
5  
6  
7  
8  
9  
10  
11  
12  
13  
14  
15  
16  
17  
18  
19  
20  
21  
22  
23  
24  
25  
26  
27  
28  
29  
30  
31  
32  
33  
34  
35  
36  
37  
38  
39  
40  
41  
42  
43  
44  
45  
46  
47  
48  
49  
50  
51  
52  
53  
54  
55  
56  
57  
58  
59  
60

Accepted Manuscript

### *Energy access assumptions*

The energy access assumptions we used correspond to future trajectories of the proportion of people having access to electricity and having access to modern cooking fuels. These trajectories are differentiated by rural and urban areas, to account for the important difference in energy access levels and shifts over time between rural and urban areas. The first two energy access trajectories, used in the scenarios *SSP1\_EA* and *SSP2\_EA*, are consistent with energy access projection by Poblete-Cazenave et al. (2021) for the SSP1 and SSP2 pathways for the period from 2020 to 2050, that we adapted to Zambia and further projected until 2070 (Supplementary Method 4). The third energy access pathway we constructed is used in the scenario *SSP1\_univ*, which normatively assumes universal access to both electricity and modern cooking fuels by 2040 with a linear increase in the proportion of the population having access to both forms of energy. After 2040 and until 2070, energy access remains universal. Although this scenario requires rapid percentage increases in access levels that are higher than the historical trends, in particular in rural areas where access to both forms of energy is currently very low, this normative scenario shows what would happen if the Sustainable Development Goals were achieved by 2040. From these macro-level energy access assumptions, we then derived the probability for an individual to get access to electricity, and to get access to modern cooking fuels (Supplementary Method 5).

### *Scenario for completely electrifying clean cooking*

In low- to middle-income countries, most households do not use only one type of cooking fuel, but often use multiple fuels, a phenomenon known as fuel stacking (Masera, Saatkamp, and Kammen 2000 ; Price, Barnard-Talher, and Troncoso 2021). Fuel stacking can be explained by several factors, such as household preferences (e.g. taste, convenience), the availability of devices and resources in local markets (Jeuland et al. 2020 ; Medina et al. 2019), and as a way to secure households against shocks (e.g. electricity outages, LPG shortages).

This phenomenon is also represented in the data we used to estimate energy consumption (see Section 2.3). Households categorized as having access to modern cooking fuels can still have significant charcoal and firewood consumption (Figure 3, first and third columns), with the associated health and well-being costs.

For this reason, we created an additional scenario we referred to as *SSP1\_univ\_elec*. This second normative scenario reflects a situation in which, in addition to the entire population getting access to electricity and modern cooking fuels as in *SSP1\_univ*, all traditional fuel use is displaced by electricity by 2040, in line with the rapid up-scaling of electric capacity occurring concurrently in the country. The scenario was not designed for plausibility, but as a what-if scenario to illustrate the full potential of modelling the nexus between energy access and fertility to reveal reductions in energy demand. To create this scenario, we used the same mortality, education, urbanization and energy access assumptions as in *SSP1\_univ*, but we added a new assumption on energy consumption. To do so, we modified the energy consumption data we derived from Baltruszewicz et al. (2021) by converting traditional fuels into the equivalent electricity use, applying conversion efficiency factors of

1  
2  
3 the respective fuels (Supplementary Method 6). Note that the population and fertility  
4 trajectories in the *SSP1\_univ\_elec* scenario are by construction the same as in *SSP1\_univ*,  
5 because in our modeling framework the energy calculator comes ex-post to the population  
6 projection model (Figure 1).  
7  
8  
9  
10  
11  
12  
13  
14  
15  
16  
17  
18  
19  
20  
21  
22  
23  
24  
25  
26  
27  
28  
29  
30  
31  
32  
33  
34  
35  
36  
37  
38  
39  
40  
41  
42  
43  
44  
45  
46  
47  
48  
49  
50  
51  
52  
53  
54  
55  
56  
57  
58  
59  
60



### 2.3 Energy consumption calculator

The MSM estimates, for four scenarios, the population counts at each time step, broken down by education level, electricity and modern cooking fuel access as well as urbanization level. To derive the energy demand of the simulated population at each time step, we multiplied the number of people in any given category by the average per capita energy consumption of this category.

We used direct final energy consumption data for households in Zambia from Baltruszewicz et al. (2021). This study combines the 2015 Living Condition Measurement Survey (LCMS) for Zambia (Central Statistical Office of Zambia 2015) with a multi-regional input-output model (MRIO) and Zambia's residential energy use from IEA to calculate the total direct, final (based on IEA) and indirect final household energy use (based on MRIO). As said, we here only used direct final energy consumption data from Baltruszewicz et al. (2021).

Since the household survey contains information about the education levels, energy access, location of residence (urban or rural areas), we used this information to calculate the average direct final energy consumption per capita, for households grouped along these variables (Figure 3). Further details on data and procedures are provided in Supplementary Method 7.



Figure 3: Direct final energy use per capita for different combinations of categories in the energy-extended LCMS dataset (Baltruszewicz et al., 2021). NB: the category No Elec-Clean cooking was not represented because there are too few cases.

In the scenarios we kept the level of energy use of the household types shown in Figure 3 constant over time. This is obviously not a realistic assumption. However, our goal was not to model the energy requirements for decent living but to capture the effect of increased access to modern energy on population dynamics and translate this effect into total final energy use by households. If too many variables are changed at the same time this effect cannot be isolated. By holding energy use per household category constant, we can clearly distinguish two energy access related effects on final energy use: the population size effect and the population composition effect. In the scenarios the share of the population with higher education, living in urban areas, and having access to modern energy changes over time and thus the frequency distribution of the energy profiles, shown in Figure 3, changes. Further details on data and procedures are provided in Supplementary Method 7.

## 2.4 Limitations

The following limitations should be kept in mind when interpreting our results.

In the microsimulation demographic model energy is not a predictor of mortality. This could lead to a small overestimation of the population size in scenarios with rapid

1  
2  
3 improvements in energy access, as child mortality and morbidity in particular declines  
4 with expansion of modern energy access (Adaji et al. 2019; Dimitrova et al. 2022). The  
5 microsimulation model does not account for the reality of fuel stacking, where energy-poor  
6 households often combine different fuel sources rather than switching cleanly from one to  
7 another. The model uses a binary variable for access to modern energy. This simplification  
8 could lead to an underestimation of the projected population size, as the underlying  
9 statistical analysis groups households with access to modern energy but still significant  
10 reliance on traditional fuels alongside households with no reliance on traditional energy.  
11  
12

13 In the energy consumption calculator energy per capita is static for each  
14 education/modern energy access/urbanization category, whereas in reality energy  
15 consumption has typically increased with more access to modern energy. As explained  
16 above this was a deliberate choice, because we want to distill the energy-fertility effect on  
17 energy use under stylized conditions.  
18  
19  
20  
21  
22  
23  
24  
25  
26  
27  
28  
29  
30  
31  
32  
33  
34  
35  
36  
37  
38  
39  
40  
41  
42  
43  
44  
45  
46  
47  
48  
49  
50  
51  
52  
53  
54  
55  
56  
57  
58  
59  
60

### 3 Results

#### 3.1 Population and fertility

We estimated that the population of Zambia in 2070 ranges from 41.5 to 54.6 million, depending on the scenario. In scenarios where the entire population gains access to modern energy and secondary education by 2040 (*SSP1\_univ*), we estimated that the population in 2070 is 27% lower than in the baseline scenario (*SSP2\_EA*) and 13% lower than in the scenario where the entire population attains secondary education but access to modern energy remains limited (*SSP1\_EA*) (Figure 4, panel a). In other words, achieving universal access to modern energy reduces the population substantially compared to a more moderate expansion of energy access (*SSP1\_EA*), holding all other modeling parameters (education and urbanization) constant.

The difference in population size is explained by the difference in fertility rates between the three scenarios (Figure 4, panel b). In the *SSP1\_univ* scenario, the total fertility rate declines almost exponentially until 2045 to reach 2.3. This corresponds to the rapid achievement of universal access to modern energy by 2040 and universal secondary education by 2030 (Figure 2). The TFR continues to decline but more slowly, to drop to 1.9 in 2070. The decline in the TFR is less dramatic in *SSP1\_EA* and *SSP2\_EA*. In 2070, it drops to 2.4 in the *SSP2\_EA* scenario and to 2.1 in *SSP1\_EA*.

The population growth rate declines in all scenarios, from about 3% in 2025 to 1.21% in 2070 under *SSP2\_EA* and to 0.69% under *SSP1\_EA* (Figure 4, panel c). The population growth rate declines to 0.41% in 2070 under *SSP1\_univ*, which is closer to the value projected by WIC under SSP1 (0.34%).

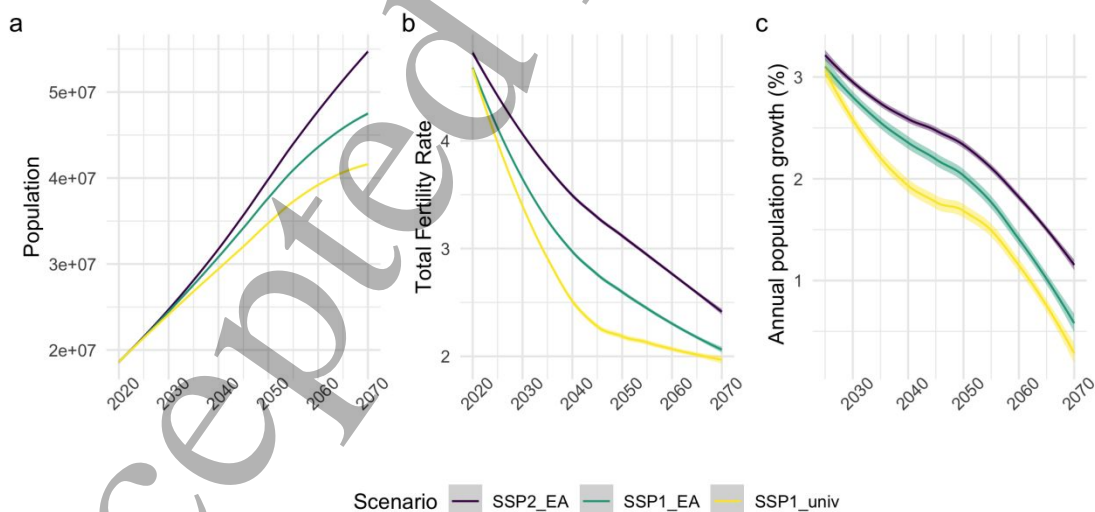


Figure 4: Evolution of the population size (a), total fertility rates (b) and annual population growth (c) in three scenarios. Note that the population and fertility trajectories for the *SSP1-univ-elec* are exactly the same as in *SSP1-univ*, by construction.

### 3.2 Energy demand

Under our scenario assumptions total household final energy demand of the Zambian population in 2070 is estimated to range from 268 to 650 PJ (Figure 5). Under the *SSP1\_univ* scenario, energy demand is estimated to be 29% lower than under the *SSP2\_EA* and 11% lower than under the *SSP1\_EA*. The energy demand reduction is dramatic in the *SSP1\_univ\_elec* scenario, with demand being 83% and 68% lower than under the *SSP2\_EA* and *SSP1\_EA* scenarios, respectively.

In contrast to total energy demand, electricity demand increases in all scenarios. In the *SSP2\_EA* scenario, which we consider the baseline scenario, electricity demand is estimated to increase in all scenarios. In the baseline scenario, electricity demand in 2070 is estimated to be 8-fold higher than in 2020, reaching 108 PJ. Under both *SSP1\_EA* and *SSP1\_univ*, demand in 2070 is about 12-fold higher than in 2020, and it is 17 times higher in the *SSP1\_univ\_elec* scenario, reaching 253PJ (Figure 6). This implies the need for a significant development of the country's installed power generation capacity.

The increase in electricity demand in our model is consistent with model results from the International Energy Agency's Africa Energy Outlook 2019 (IEA 2019). Although this macro-level model does not include the relationship between energy access and population, it provides us with an order of magnitude for changes to electricity demand. They projected electricity demand in sub-Saharan Africa (excluding South Africa) to 2040 under a *Stated Policy* scenario, which simulates a situation in which all current energy policies are implemented, and an *Africa Case* scenario, which reflects a situation with more ambitious goals for sustainability and economic development. They estimate that electricity demand would increase by a factor of 4 compared to 2018 levels under their *Stated Policy* scenario, and by a factor of 8 under their *Africa Case* scenario. These magnitudes are similar to our estimates. We estimated that by 2040, electricity demand could be as little as twice the 2020 level or as much as 10 times the 2020 level, depending on the scenario considered (Figure 6 in the main text).

The share of traditional energy in the energy demand also varies strongly in the different scenarios, and in 2070 it ranges from 82% to 0 % (Figure 5). In the *SSP2\_EA* scenario, in 2070 82% of the energy demand is traditional energy, the majority of it being firewood and charcoal. In the *SSP1\_EA* scenario, 66% comes from traditional energy, and only 59% in the *SSP1\_univ* scenario. It can be surprising that in this scenario, still more than half of the energy demand comes from traditional energy. As explained above by the fact that households use multiple fuels, and even when they get access to one source of modern energy, they continue to use some traditional energy on the side (Figure 3).

In *SSP1\_univ\_elec*, since all cooking facilities are replaced by electricity by 2040, energy demand from this date onwards is only comprised of modern energy. The share of traditional energy in total household energy demand experiences a small drop around 2035 under *SSP1\_univ* and around 2055 under *SSP1\_EA*. This coincides with the timing when universal access to modern cooking fuels is achieved, which happens in 2040 under *SSP1\_univ*, and in 2055 under *SSP1\_EA* (Figure 2).

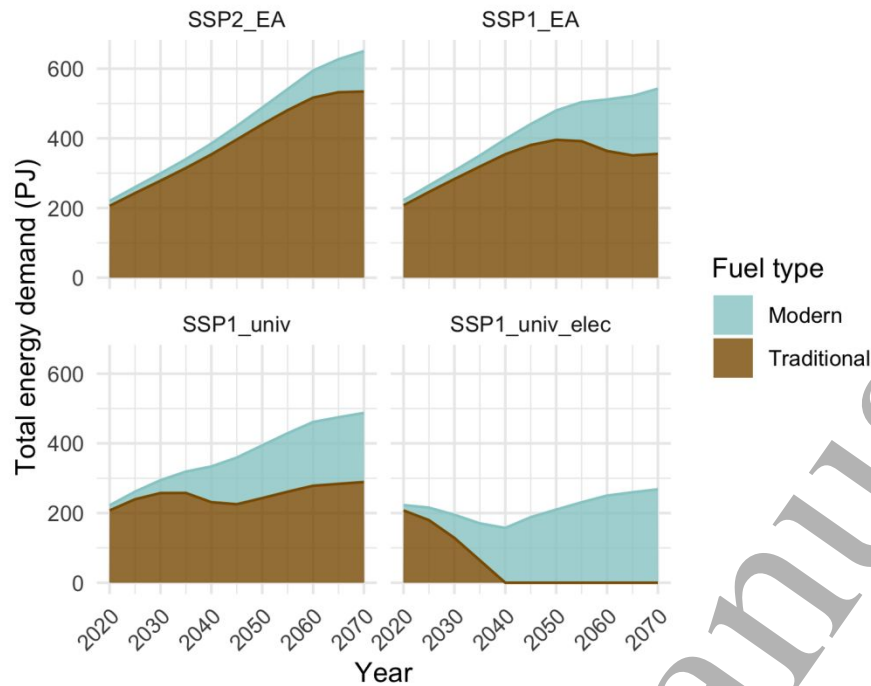


Figure 5: Traditional and modern energy demand in the four scenarios. Traditional energy includes firewood, charcoal, coal, kerosene and paraffin. Modern energy includes electricity, gas, LPG, diesel.

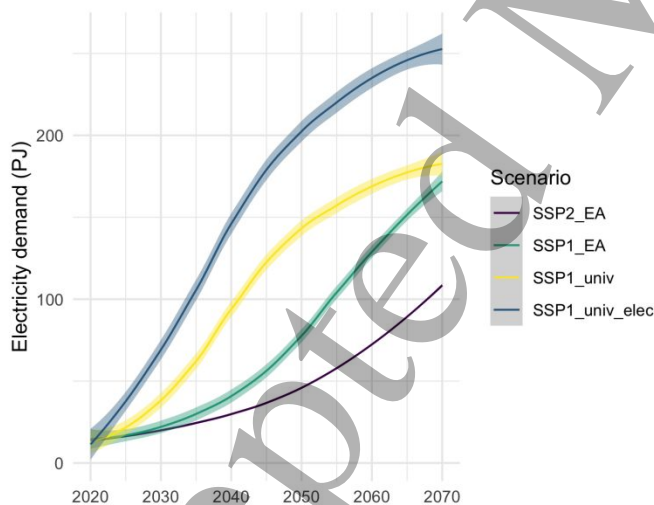


Figure 6: Electricity demand in the four scenarios.

### 3.3 Decomposing energy demand change by population composition and size effects

Keeping final energy use per capita and population groups constant over the scenario period, now allows us to quantify two effects of the feedback between energy access and



1  
2  
3 demographic change on total residential energy demand in Zambia: the population  
4 composition and the population size effect. First, we considered the impact on energy  
5 demand of the scenario-driven increase in the share of the population with higher  
6 education, living in urban areas, and having access to modern energy. This change in  
7 population composition affects energy consumption patterns, since energy consumption  
8 per capita differs between groups (Figure 3). Second, we considered the effect of changes in  
9 population size, which directly affects energy demand.  
10  
11

12 To distinguish the “population size effect” from the “composition-efficiency effect”, we  
13 decomposed the change in energy demand between *SSP1\_EA* and *SSP1\_univ*, the two  
14 scenarios that differ only in terms of the energy access pathway. However, since the  
15 education, urbanization and mortality trajectories are identical under these two scenarios,  
16 we were able to factor out the “population size effect” alone.  
17  
18

19 To decompose the change in energy demand, we calculated energy demand for a  
20 hypothetical scenario in which the proportion of the population in each education, energy  
21 access, and urbanization group in each time step is kept as in *SSP1\_univ*, but the population  
22 size is as in *SSP1\_EA*. This simulates a situation where energy access improves, but the  
23 effect of this improvement on population size is not considered. Figure 7 shows the results  
24 of this decomposition in both relative (panel a) and absolute (panel b) terms. The blue in  
25 the graph represents the composition-efficiency effect and the orange represents the  
26 population size effect.  
27  
28

29 We estimated that the “composition efficiency” effect due to expanded energy access  
30 contributes 26% of the reduction in energy demand between *SSP1\_EA* and *SSP1\_univ* in  
31 2030, and 56% in 2050 (Figure 7). After 2060, this effect contributes 100% to the total  
32 change in energy demand. In other words, if the demographic feedback is not taken into  
33 account, the energy demand under *SSP1\_univ* would be higher than under *SSP1\_EA* from  
34 2060 onwards (Figure 7, panel b). Thus, the orange area represents the estimated  
35 magnitude of the overestimation of energy demand when the demographic feedback from  
36 expanded access to modern energy is not considered.  
37  
38  
39  
40  
41  
42  
43  
44  
45  
46  
47  
48  
49  
50  
51  
52  
53  
54  
55  
56  
57  
58  
59  
60

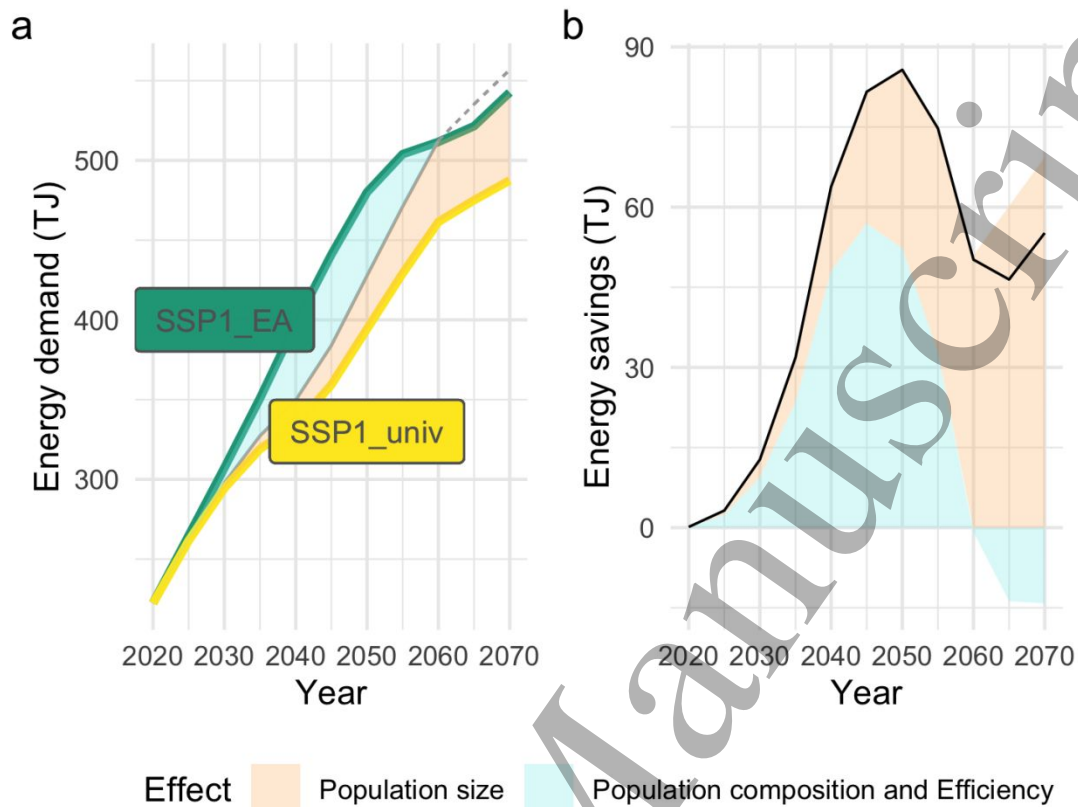


Figure 7: Decomposition of the difference in energy demand in absolute (a) and relative terms (b) between the SSP1\_univ scenario (yellow) and the SSP1\_EA scenario (green). The orange area corresponds to share of the difference in energy demand due to the population size effect (itself due to expanded energy access). The blue area represents the share of the energy demand difference that is due to the composition-efficiency effect.

## 4 Discussion and conclusions

Achieving universal access to modern energy is more urgent than ever. It is a necessary condition for improvements in well-being, health, education, gender equality and climate resilience, and recent studies have also shown its significant impact on reproductive health and fertility patterns.

In this article we presented a unique microsimulation demographic model that endogenizes the effect of access to modern energy on fertility decline and applied it to four energy transition scenarios for Zambia. The model is unique in that it includes the link between energy access and fertility decline in a demographic model that accounts for age, sex and education structure of the population. The scenarios used background assumptions from the SSP framework, as it is the most widely used framework in energy modeling. The energy pathways in the *SSP1\_EA* and the *SSP2\_EA* scenarios were taken from the SSP literature (Poblete-Cazenave et al. 2021). The energy pathways for the *SSP2\_univ* and *SSP1\_univ\_elec* were created by us to demonstrate the demographic and energy use dividends that could be achieved if much more ambitious transition pathways towards modern energy were implemented.

In the *SSP2\_EA* scenario, which we interpret as baseline scenario, the projected population of Zambia in 2070 is 54,6 million, however in our *SSP1\_univ* and *SSP1\_univ\_elec* scenarios (which yield per definition the same population projection, see above) the population is 41.5 million, or 23% lower. The population size projected for Zambia in 2070 for the SSP2 scenario from the WIC is 47.1 million people, which is 13% higher than the population size we found in the *SSP1\_univ* scenario (41.5 million).

Obviously, population projections are not directly comparable across models due to differences in model design, input data, and methodologies. Therefore, it is the difference in population outcomes between the three energy-population pathways presented here that clearly shows a substantial effect, especially in scenarios with rapid expansion of access to modern energy.

The main contribution of this study is that it quantifies the potential contribution of two modern energy related population effects, the composition effect and the size effect, on aggregate residential energy demand under scenarios of rapid achievement of universal access to modern energy. We have deliberately kept per capita residential energy demand for each demographic group constant in order to be able to clearly quantify these two effects. Thus, the aggregate energy projections should not be interpreted as energy demand projections for decent living in Zambia.

The energy results, presented here, estimate the energy-population dividend that can be expected from a rapid energy transition in Zambia. Household energy demand from all fuels would be 29% lower but electricity demand would be higher when the entire population of Zambia had access to modern energy compared to the baseline. If the entire population of Zambia were to switch to electricity only for household energy, energy demand would be 83% lower. Our study suggests that incorporating the energy-population dividend into all energy models that project energy demand or carbon emissions following

1  
2  
3 the expansion of modern energy access would result in greater economic and political  
4 incentives to invest in modern energy access, for example in the frame of carbon credit  
5 schemes for clean cookstoves or international emission reductions targets (Supplementary  
6 Note 1).  
7

8  
9 Although not the focus of this paper, this translates into significant differences between the  
10 scenarios in terms of greenhouse gas emissions. For example, emissions in the *SSP1\_univ*  
11 scenario are about halved in 2050 compared to the baseline (Supplementary Method 8,  
12 Supplementary Tables 3-6 and Supplementary Figure 2). If combined with climate policies  
13 that encourage the deployment of renewable energy, this could further reduce emissions  
14 (Dagnachew et al. 2018). This could also enable the decarbonization of sectors other than  
15 the residential sector, which are expected to grow as the population develops. For Zambia  
16 future research could use our results as benchmark to more realistically represent the  
17 complexity of the energy transition at the household level. This could include scenarios of  
18 increasing household energy use, variations in its energy mix and reliability, such as  
19 e.g. accounting for the quality of the electricity connection or better modeling how the  
20 cooking energy transition occurs.  
21  
22

23  
24 The presented microsimulation demographic model could be applied to many other low-  
25 income countries because the energy-fertility nexus is almost universal in high-fertility  
26 countries (Belmin et al. 2022). The model could also be improved by endogenizing energy  
27 not only for fertility but also for mortality rates and by including modern energy use per  
28 capita as an explanatory variable. The latter was the basic idea of Sheffield (1998) who,  
29 however, did not develop a demographic model, but used historical correlations between  
30 aggregate data for total (i.e. including industrial) energy use per capita and population  
31 growth across world regions. Applying similar models to more countries with different  
32 energy access, socio-economic and demographic contexts could further strengthen our  
33 findings on the importance of the energy-population dividend.  
34  
35

36  
37 Further efforts are needed to incorporate the relationship between access to energy  
38 services and decent living standards and population dynamics into energy models (Kikstra  
39 et al. 2021). Such models can reveal novel mitigation solutions that are simultaneously  
40 beneficial to achieving other SDGs, such as SDG 7 on energy access, SDG 3 on good health,  
41 or SDG 5 on gender equality. While the challenge of rapidly achieving universal access to  
42 modern energy may seem daunting, shedding light on the additional climate and  
43 development co-benefits of achieving this goal could help further encourage investments  
44 aimed at achieving reliable access to modern energy for all.  
45  
46

## 47 Data Availability

48  
49 The DHS data used to produce the base population and the pooled dataset for the  
50 regression is publicly available and free of charge at: <https://dhsprogram.com/>, but access  
51 to the data requires a permission from the DHS Program. The WIC data is publicly available  
52 at: <http://dataexplorer.wittgensteincentre.org/wcde-v2/>. The raw energy data may be  
53 available upon request. The different data used to calculate greenhouse gas emissions are  
54 publicly available (see Supplementary Table 4 for all the data sources). All the available  
55  
56  
57  
58  
59  
60

1  
2  
3 data is located on the companion git repository of this article:  
4 <https://github.com/camillebelmin/achieving-universal-energy-access>.  
5  
6

## 7 **Acknowledgements**

8  
9  
10 The study was partly developed during the Young Scientists Summer Program at the  
11 International Institute for Applied Systems Analysis. The authors acknowledge the Potsdam  
12 Institute for Climate Impact research for funding of this program. The authors are thankful  
13 to Marta Baltrusiewicz for access to the energy use data and for guidance on its use.  
14  
15

## 16 **Code Availability**

17  
18  
19 The pre-processing and the analysis were carried out in R and Rmarkdown and are fully  
20 reproducible. All the code is available on the git repository of this article:  
21 <https://github.com/camillebelmin/achieving-universal-energy-access>.  
22  
23  
24  
25  
26  
27  
28  
29  
30  
31  
32  
33  
34  
35  
36  
37  
38  
39  
40  
41  
42  
43  
44  
45  
46  
47  
48  
49  
50  
51  
52  
53  
54  
55  
56  
57  
58  
59  
60

## References

- Adaji, Enemona Emmanuel, Winifred Ekezie, Michael Clifford, and Revati Phalkey. 2019. "Understanding the Effect of Indoor Air Pollution on Pneumonia in Children Under 5 in Low- and Middle-Income Countries: A Systematic Review of Evidence." *Environmental Science and Pollution Research* 26 (4): 3208–25. <https://doi.org/10.1007/s11356-018-3769-1>.
- Adhikari, Saroja, Wolfgang Lutz, and Samir KC. 2023. "Rural/Urban Fertility Differentials in the Global South: Is Female Education the Key Driver of Declining Birth Rates?"
- Baltruszewicz, Marta, Julia K. Steinberger, Anne Owen, Lina I. Brand-Correa, and Jouni Paavola. 2021. "Final Energy Footprints in Zambia: Investigating Links Between Household Consumption, Collective Provision, and Well-Being." *Energy Research & Social Science* 73 (March): 101960. <https://doi.org/10.1016/j.erss.2021.101960>.
- Belmin, Camille, Roman Hoffmann, Peter-Paul Pichler, and Helga Weisz. 2022. "Fertility Transition Powered by Women's Access to Electricity and Modern Cooking Fuels." *Nature Sustainability* 5 (3): 245–53.
- Central Statistical Office of Zambia. 2015. "World Bank, Zambia Living Conditions Monitoring Survey 2015. Retrieved from <Http://Zambia.opendataforafrica.Org/Ssvcmrd>."
- Dagnachew, Anteneh G., Paul L. Lucas, Andries F. Hof, and Detlef P. van Vuuren. 2018. "Trade-Offs and Synergies Between Universal Electricity Access and Climate Change Mitigation in Sub-Saharan Africa." *Energy Policy* 114 (March): 355–66. <https://doi.org/10.1016/j.enpol.2017.12.023>.
- Das, Ipsita, Thomas Klug, PP Krishnapriya, Victoria Plutshack, Raja Saparapa, Stephanie Scott, Erin Sills, Marc Jeuland, Njeri Kara, and Subhrendu Pattanayak. 2020. *A Virtuous Cycle? Reviewing the Evidence on Women's Empowerment and Energy Access, Frameworks, Metrics and Methods*.
- Dimitrova, Asya, Guillaume Marois, Gregor Kiesewetter, Peter Rafaj, Shonali Pachauri, Samir KC, Sergio Olmos, Davide Rasella, and Cathryn Tonne. 2022. "Projecting the Impact of Air Pollution on Child Stunting in India—Synergies and Trade-Offs Between Climate Change Mitigation, Ambient Air Quality Control, and Clean Cooking Access." *Environmental Research Letters* 17 (10): 104004. <https://doi.org/10.1088/1748-9326/ac8e89>.
- Ezzati, Majid. 2005. "Indoor Air Pollution and Health in Developing Countries." *The Lancet* 366 (9480): 104–6. [https://doi.org/10.1016/S0140-6736\(05\)66845-6](https://doi.org/10.1016/S0140-6736(05)66845-6).
- Fuchs, Regina, Elsie Pamuk, and Wolfgang Lutz. 2010. "Education or Wealth: Which Matters More for Reducing Child Mortality in Developing Countries?" *Vienna Yearbook of Population Research* 8: 175–99. <https://www.jstor.org/stable/23025514>.
- Fujii, Tomoki, and Abu S. Shonchoy. 2020. "Fertility and Rural Electrification in Bangladesh." *Journal of Development Economics* 143 (March): 102430. <https://doi.org/10.1016/j.jdeveco.2019.102430>.



1  
2  
3 GEA. 2012. *Global Energy Assessment*. Cambridge University Press.  
4 <https://ideas.repec.org/b/cup/cbooks/9780521182935.html>.

6 Grimm, Michael, Robert Sparrow, and Luca Tasciotti. 2015. "Does Electrification Spur the  
7 Fertility Transition? Evidence From Indonesia." *Demography* 52 (5): 1773–96.  
8 <https://doi.org/10.1007/s13524-015-0420-3>.

10 Grogan, Louise. 2016. "Household Electrification, Fertility, and Employment: Evidence from  
11 Hydroelectric Dam Construction in Colombia." *Journal of Human Capital* 10 (1): 109–58.  
12 <https://doi.org/10.1086/684580>.

14 Harbison, Sarah F., and Warren C. Robinson. 1985. "Rural Electrification and Fertility  
15 Change." *Population Research and Policy Review* 4 (2): 149–71.  
16 <https://doi.org/10.1007/BF00127549>.

18 ICF. 2004. "Demographic and Health Surveys [Datasets]. Funded by USAID."  
19 <https://dhsprogram.com/data>.

21 IEA. 2019. "Africa Energy Outlook 2019," 288.

23 IEA, International Energy Agency. 2016. "WEO-2016 Special Report: Energy and Air  
24 Pollution – Analysis." <https://www.iea.org/reports/energy-and-air-pollution>.

26 IEA, World Bank, UNSD, WHO, and IRENA. 2023. "Tracking SDG7: The Energy Progress  
27 Report 2023." <https://www.irena.org/Publications/2023/Jun/Tracking-SDG7-2023>.

29 Jeuland, Marc, Subhrendu K. Pattanayak, Jie-Sheng Tan Soo, and Faraz Usmani. 2020.  
30 "Preferences and the Effectiveness of Behavior-Change Interventions: Evidence from  
31 Adoption of Improved Cookstoves in India." *Journal of the Association of Environmental and  
32 Resource Economists* 7 (2): 305–43. <https://doi.org/10.1086/706937>.

34 Jiang, Leiwen, and Brian C. O'Neill. 2017. "Global Urbanization Projections for the Shared  
35 Socioeconomic Pathways." *Global Environmental Change* 42 (January): 193–99.  
36 <https://doi.org/10.1016/j.gloenvcha.2015.03.008>.

38 KC, Samir, Moradhvaj Dhakad, Michaela Potančoková, Saroja Adhikari, Dilek Yildiz, Marija  
39 Mamolo, Tomas Sobotka, et al. 2024. "Updating the Shared Socioeconomic Pathways (SSPs)  
40 Global Population and Human Capital Projections," February.

42 KC, Samir, and Wolfgang Lutz. 2017. "The Human Core of the Shared Socioeconomic  
43 Pathways: Population Scenarios by Age, Sex and Level of Education for All Countries to  
44 2100." *Global Environmental Change* 42 (January): 181–92.  
45 <https://doi.org/10.1016/j.gloenvcha.2014.06.004>.

47 Kikstra, Jarmo S., Alessio Mastrucci, Jihoon Min, Keywan Riahi, and Narasimha D. Rao. 2021.  
48 "Decent Living Gaps and Energy Needs Around the World." *Environmental Research Letters*  
49 16 (9): 095006. <https://doi.org/10.1088/1748-9326/ac1c27>.

1  
2  
3 Lerch, Mathias. 2017. "Urban and Rural Fertility Transitions in the Developing World: A  
4 Cohort Perspective." WP-2017-011. Rostock: Max Planck Institute for Demographic  
5 Research. <https://doi.org/10.4054/MPIDR-WP-2017-011>.

6  
7 Lutz, Wolfgang, William P. Butz, and KC ed Samir. 2014. *World Population and Human*  
8 *Capital in the Twenty-First Century*. OUP Oxford.

9  
10 Lutz, Wolfgang, Anne Goujon, Samir KC, Marcin Stonawski, and Nikolaos Stilianakis. 2018.  
11 *Demographic and Human Capital Scenarios for the 21st Century: 2018 Assessment for 201*  
12 *Countries*. IIASA.

13  
14 Luzi, Lucia, Yunhui Lin, Brian Bonsuk Koo, Dana Rysankova, and Elisa Portale. 2019.  
15 *Zambia - Beyond Connections: Energy Access Diagnostic Report Based on the Multi-Tier*  
16 *Framework*. ESMAP Papers. World Bank. <https://doi.org/10.1596/32750>.

17  
18 Marois, Guillaume, and Samir KC. 2021. "Microsimulation Population Projections with SAS:  
19 A Reference Guide."  
20 [https://scholar.google.de/citations?view\\_op=view\\_citation&hl=fr&user=UCjfWdcAAAAJ&](https://scholar.google.de/citations?view_op=view_citation&hl=fr&user=UCjfWdcAAAAJ&start=20&pagesize=80&citation_for_view=UCjfWdcAAAAJ:RGFaLdJalmkC)  
21 [start=20&pagesize=80&citation\\_for\\_view=UCjfWdcAAAAJ:RGFaLdJalmkC](https://scholar.google.de/citations?view_op=view_citation&hl=fr&user=UCjfWdcAAAAJ&start=20&pagesize=80&citation_for_view=UCjfWdcAAAAJ:RGFaLdJalmkC).

22  
23 Masera, Omar R, Barbara D Saatkamp, and Daniel M Kammen. 2000. "From Linear Fuel  
24 Switching to Multiple Cooking Strategies: A Critique and Alternative to the Energy Ladder  
25 Model." *World Development* 28 (12): 2083–103. [https://doi.org/10.1016/S0305-](https://doi.org/10.1016/S0305-750X(00)00076-0)  
26 [750X\(00\)00076-0](https://doi.org/10.1016/S0305-750X(00)00076-0).

27  
28 McCollum, David L., Luis Gomez Echeverri, Sebastian Busch, Shonali Pachauri, Simon  
29 Parkinson, Joeri Rogelj, Volker Krey, et al. 2018. "Connecting the Sustainable Development  
30 Goals by Their Energy Inter-Linkages." *Environmental Research Letters* 13 (3): 033006.  
31 <https://doi.org/10.1088/1748-9326/aaafe3>.

32  
33 Medina, Paulo, Victor Berrueta, Lourdes Cinco, Victor Ruiz-García, Rufus Edwards, Belén  
34 Olaya, Astrid Schilmann, and Omar Masera. 2019. "Understanding Household Energy  
35 Transitions: From Evaluating Single Cookstoves to 'Clean Stacking' Alternatives."  
36 *Atmosphere* 10 (11): 693. <https://doi.org/10.3390/atmos10110693>.

37  
38 OXFAM. 2017. "Energy and Women and Girls: Analyzing the Needs, Uses, and Impacts of  
39 Energy on Women and Girls in the Developing World." [/explore/research-](/explore/research-publications/energy-women-girls/)  
40 [publications/energy-women-girls/](/explore/research-publications/energy-women-girls/).

41  
42 Peters, Jörg, and Colin Vance. 2010. *Rural Electrification and Fertility*. Essen: Rheinisch-  
43 Westfälisches Institut für Wirtschaftsforschung. [http://nbn-](http://nbn-resolving.de/urn:nbn:de:101:1-20100624181)  
44 [resolving.de/urn:nbn:de:101:1-20100624181](http://nbn-resolving.de/urn:nbn:de:101:1-20100624181).

45  
46 Poblete-Cazenave, Miguel, Shonali Pachauri, Edward Byers, Alessio Mastrucci, and Bas van  
47 Ruijven. 2021. "Global Scenarios of Household Access to Modern Energy Services Under  
48 Climate Mitigation Policy." *Nature Energy* 6 (8): 824–33. [https://doi.org/10.1038/s41560-](https://doi.org/10.1038/s41560-021-00871-0)  
49 [021-00871-0](https://doi.org/10.1038/s41560-021-00871-0).

- 1  
2  
3 Potter, Joseph E., Carl P. Schmertmann, and Suzana M. Cavenaghi. 2002. "Fertility and  
4 Development: Evidence from Brazil." *Demography* 39 (4): 739–61.  
5 <https://doi.org/10.1353/dem.2002.0039>.  
6  
7 Price, Martin, Melinda Barnard-Tallier, and Karin Troncoso. 2021. "Stacked: In Their  
8 Favour? The Complexities of Fuel Stacking and Cooking Transitions in Cambodia, Myanmar,  
9 and Zambia." *Energies* 14 (15): 4457. <https://doi.org/10.3390/en14154457>.  
10  
11 Riahi, Keywan, Detlef P. van Vuuren, Elmar Kriegler, Jae Edmonds, Brian C. O'Neill,  
12 Shinichiro Fujimori, Nico Bauer, et al. 2017. "The Shared Socioeconomic Pathways and  
13 Their Energy, Land Use, and Greenhouse Gas Emissions Implications: An Overview." *Global  
14 Environmental Change* 42 (January): 153–68.  
15 <https://doi.org/10.1016/j.gloenvcha.2016.05.009>.  
16  
17 Samboko, Paul, Cliff Dlamini, Kaala Moombe, and Stephen Syampungani. 2016. "Load  
18 Shedding and Charcoal Use in Zambia: What Are the Implications on Forest Resources."  
19 Indaba Agricultural Policy Research Institute.  
20  
21 Sheffield, John. 1998. "World Population Growth and the Role of Annual Energy Use Per  
22 Capita." *Technological Forecasting and Social Change* 59 (1): 55–87.  
23 [https://doi.org/10.1016/S0040-1625\(97\)00071-1](https://doi.org/10.1016/S0040-1625(97)00071-1).  
24  
25 UNFPA. 2019. "World Population Prospects - Population Division - United Nations."  
26 <https://population.un.org/wpp/GlossaryOfDemographicTerms/>.  
27  
28 ———. 2022. "World Population Prospects - Population Division - United Nations."  
29 <https://population.un.org/wpp/>.  
30  
31 Van Imhoff, Evert, and Wendy Post. 1998. "Microsimulation Methods for Population  
32 Projection." *Population* 10 (1): 97–136. [https://www.persee.fr/doc/pop\\_0032-  
33 4663\\_1998\\_hos\\_10\\_1\\_6824](https://www.persee.fr/doc/pop_0032-4663_1998_hos_10_1_6824).  
34  
35 WHO, -, ed. 2014. *WHO Guidelines for Indoor Air Quality: Household Fuel Combustion*.  
36 Geneva, Switzerland: World Health Organization.  
37  
38 Wickramasinghe, Anoja. 2011. "Energy Access and Transition to Cleaner Cooking Fuels and  
39 Technologies in Sri Lanka: Issues and Policy Limitations." *Energy Policy, Clean Cooking  
40 Fuels and Technologies in Developing Economies*, 39 (12): 7567–74.  
41 <https://doi.org/10.1016/j.enpol.2011.07.032>.  
42  
43 Winther, Tanja, Margaret N. Matinga, Kirsten Ulsrud, and Karina Standal. 2017. "Women's  
44 Empowerment Through Electricity Access: Scoping Study and Proposal for a Framework of  
45 Analysis." *Journal of Development Effectiveness* 9 (3): 389–417.  
46 <https://doi.org/10.1080/19439342.2017.1343368>.  
47  
48  
49  
50  
51  
52  
53  
54  
55  
56  
57  
58  
59  
60