

Overview

Assess current practices, user requirements and barriers of present Land Use and Land Cover (LULC) technologies and illustrate the potential extension of such applications from the incorporation of *in-situ* citizen observatories

Build the LandSense engagement platform (i.e. extending existing technology and adopting citizen-driven observations) for the collection, integration, management, and contextualized presentation of LULC information by key stakeholders

Deliver four innovative and scalable LULC services - LandSense Campaigner, Farmland Support, Change Detector, and Quality Assurance & Control - and implement a strategy detailing the sustainable exploitation of these technologies post-project

Demonstrate the quality, confidence and added value of *in-situ* citizen-driven observations and citizen engagement for improved LULC monitoring via three demonstration cases covering different themes

Promote the uptake of the LandSense technologies, solutions, and products for large-scale LULC monitoring across the EU and beyond through the LandSense Services Incubator comprised of key stakeholders from various sectors

Impacts

Reduce the costs of *in-situ* data collection for LULC calibration/validation activities and offer a significant spatial-temporal extension to the *in-situ* component of the GEOSS and Copernicus initiatives.

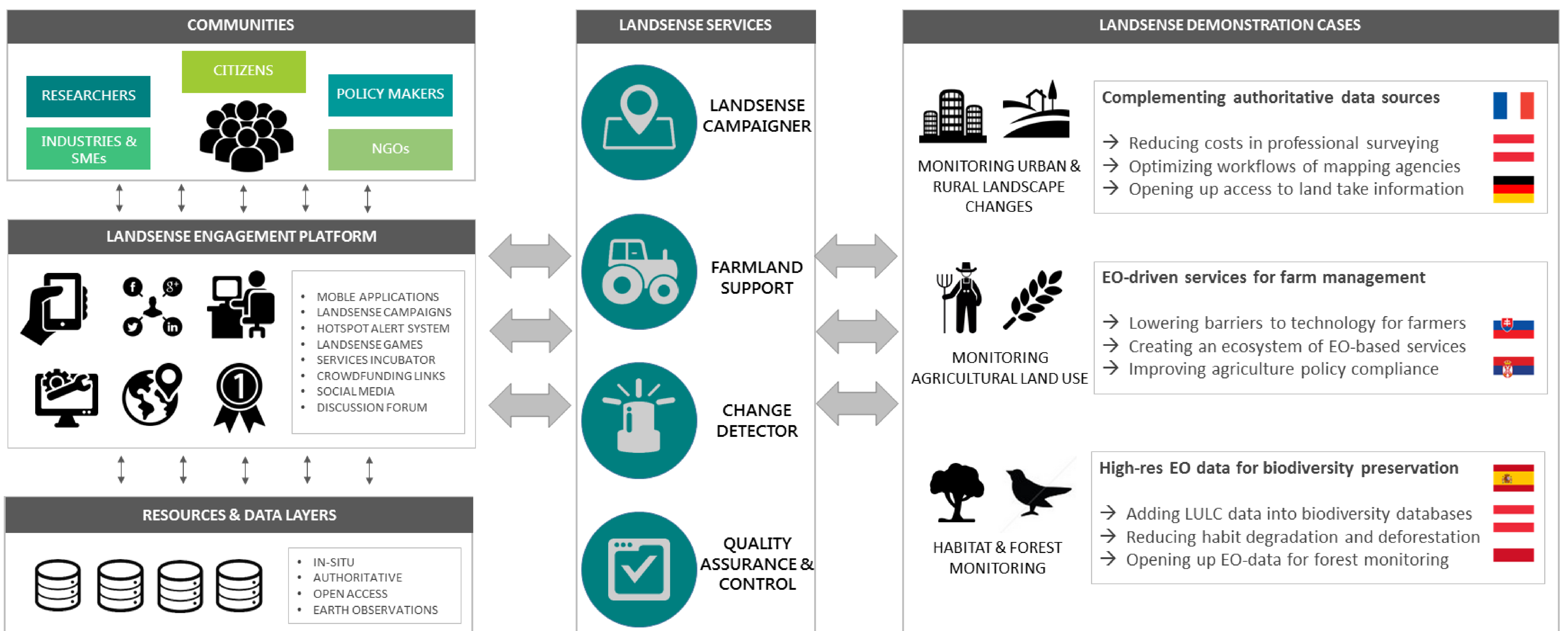
Empower citizens via a range of activities from data collection to knowledge exchange with stakeholders, using LandSense tools for collaborative mapping, opinion surveys and informed decision-making.

Enhance the implementation of local and global policy objectives while engaging citizens to contribute to environmental multi-level governance in terms of increased transparency, accountability and responsiveness.

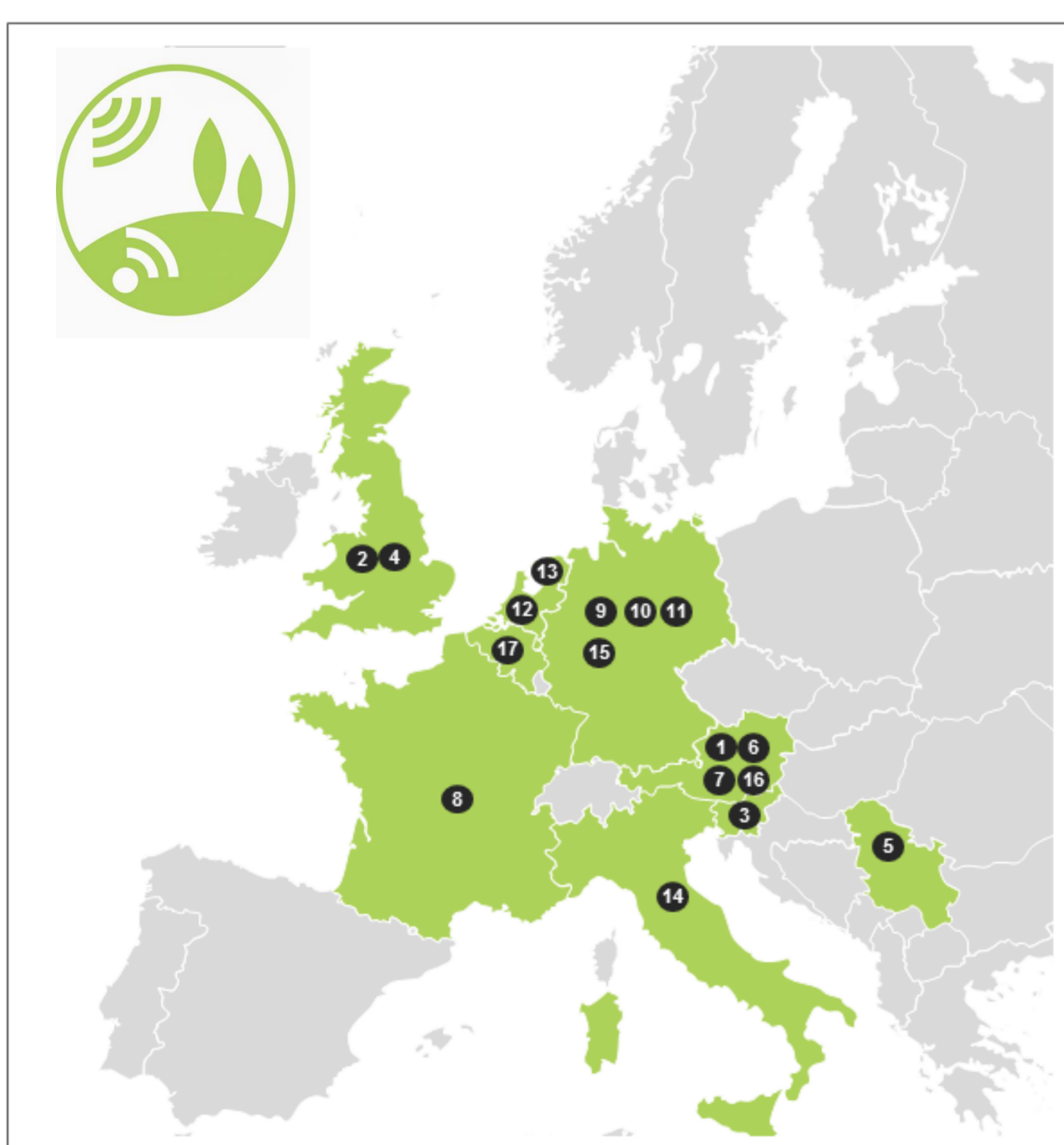
Foster an innovation community in the area of *in-situ* monitoring for LULC by coordinating with ongoing and forthcoming citizen observatories to align activities, interests and networks

Increase Europe's role in the business of *in-situ* monitoring through the development of four scalable services and the creation of an innovation marketplace for sustainable market uptake

Concept



Consortium



- 1 International Institute for Applied Systems Analysis
- 2 Birdlife International
- 3 Sinergise
- 4 University of Nottingham
- 5 InoSens doo
- 6 GeoVille Information Systems GmbH
- 7 Environment Agency Austria
- 8 Institut National de l'Information Géographique et Forestière
- 9 European Citizen Science Association
- 10 StZ Felis
- 11 University of Heidelberg
- 12 Wageningen University
- 13 VU University Amsterdam
- 14 Joint Research Centre
- 15 Secure Dimensions
- 16 Friends of the Earth/Global 2000
- 17 European Crowdfunding Network



Duration:
September, 2016 - August, 2020

Website:
www.landsense.eu

This project is funded as an innovation action from the European Union's Horizon 2020 funding program under grant agreement number 689812

Coordinator:
Steffen Fritz
International Institute for Applied Systems Analysis
fritz@iiasa.ac.at

Contact:
info@landsense.eu

