

Supporting Material for

## **Temporal and spatial distribution of global mitigation cost: INDCs and generational equity**

Contents:

- 1 Region classification
- 2 Emission constraints for INDCs
- 3 Emission pathway assumptions
- 4 GDP growth rate
- 5 Population growth rate
- 6 Discount rate for all scenarios
- 7 Total primary energy supply
- 8 Electricity generation
- 9 Regression equation in inter-regional analysis
- 10 Figures for SINDC\_450CO2e scenario

## 1 Region classification

SM Table 1 Region classification

| Region               | AIM/CGE classification |
|----------------------|------------------------|
| Industrial countries | United States          |
|                      | EU25                   |
|                      | Oceania                |
|                      | Japan                  |
|                      | Canada                 |
| Transition countries | Rest of Europe         |
|                      | Turkey                 |
|                      | China                  |
|                      | India                  |
|                      | Brazil                 |
|                      | Former Soviet Union    |
| Developing countries | Southeast Asia         |
|                      | Rest of Asia           |
|                      | Rest of South America  |
|                      | Middle East            |
|                      | North Africa           |
|                      | Rest of Africa         |

## 2 Emission constraints for INDCs

We have taken the INDC information from the webpage [1] and translated this into emissions constraints in the model. We constructed the 2030 emissions targets and then linearly connected these with 2020 emissions. For those countries declaring their target year as 2025 (e.g., the United States), we produced the emissions constraints for 2025 and then calculated the emissions reduction rate from 2020 to 2025. Finally, we adopted that reduction rate from 2025 to 2030.

There are ten types of commitments, as shown in SM Table 1. The emissions coverage is focused on GHGs or CO<sub>2</sub>, and some countries use emissions intensity. The reference diverges from 1990 to 2014, and some countries also use the baseline. In cases where we used a reference year before 2005, which is the base year in our model simulation, we used the EDGAR4.2 emissions inventory to determine the emissions target. For those countries that use the year after 2005 as the reference year, we used

the emissions results from the baseline scenario. The GDP in 2030 was used for the intensity cases. There are some countries that use specific sector emissions targets, but we ignored these special cases because it would have been too challenging to use model analysis in such instances; these cases also account for a tiny proportion of total global emissions. If countries are treated as a single region in the model (like Japan and China), there is no problem with case 7 because we obtain an identical baseline scenario. However, if the countries are aggregated into a region (e.g., the rest of Asia), we need to derive baseline emissions for such countries. In order to do so, assuming that we have GDP assumptions for every country, we used the baseline scenario's emissions intensity change in the aggregated region. Then, GDP and emissions intensity changes for each country were used to derive the emissions for the baseline scenario.

SM Table 2 List of INDC commitment patterns

| Case | Emissions               | Reference | Data source and assumption  |
|------|-------------------------|-----------|---|
| 1    | GHG Emissions           | 1990      | Based on EDGAR4.2   |
| 2    | GHG Emissions           | 1994      |   |
| 3    | GHG Emissions           | 2000      |   |
| 4    | GHG Emissions           | 2005      |   |
| 5    | GHG Emissions           | 2010      | Based on emissions in the reference year of baseline scenario and GDP in 2030 |
| 6    | GHG Emissions           | 2014      |   |
| 7    | GHG Emissions           | baseline  | Based on baseline scenario  |
| 8    | GHG Emissions intensity | 2005      | Based on EDGAR4.2 and GDP in 2030   |
| 9    | CO2 Emissions intensity | 2005      |   |
| 10   | GHG Emissions intensity | 2007      | Based on baseline scenario  |
| 11   | GHG Emissions intensity | 2010      |   |
| 12   | GHG Emissions intensity | baseline  |   |

### 3 Emission pathway assumptions

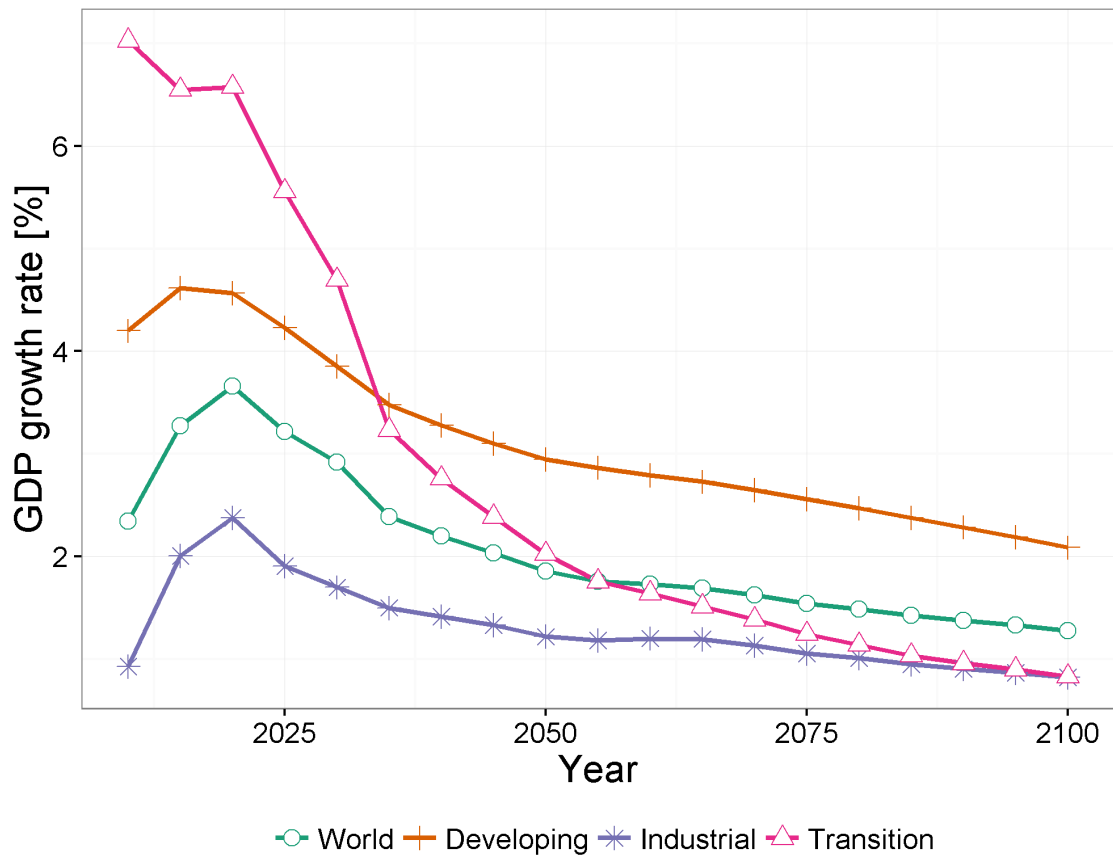
Our modeling framework assumed exogenous emissions pathways for both

scenarios. The determination of emissions pathways is based on the following equation:

$$x_t = z_t + y_{t0} - \beta(t - 2020)^\alpha$$

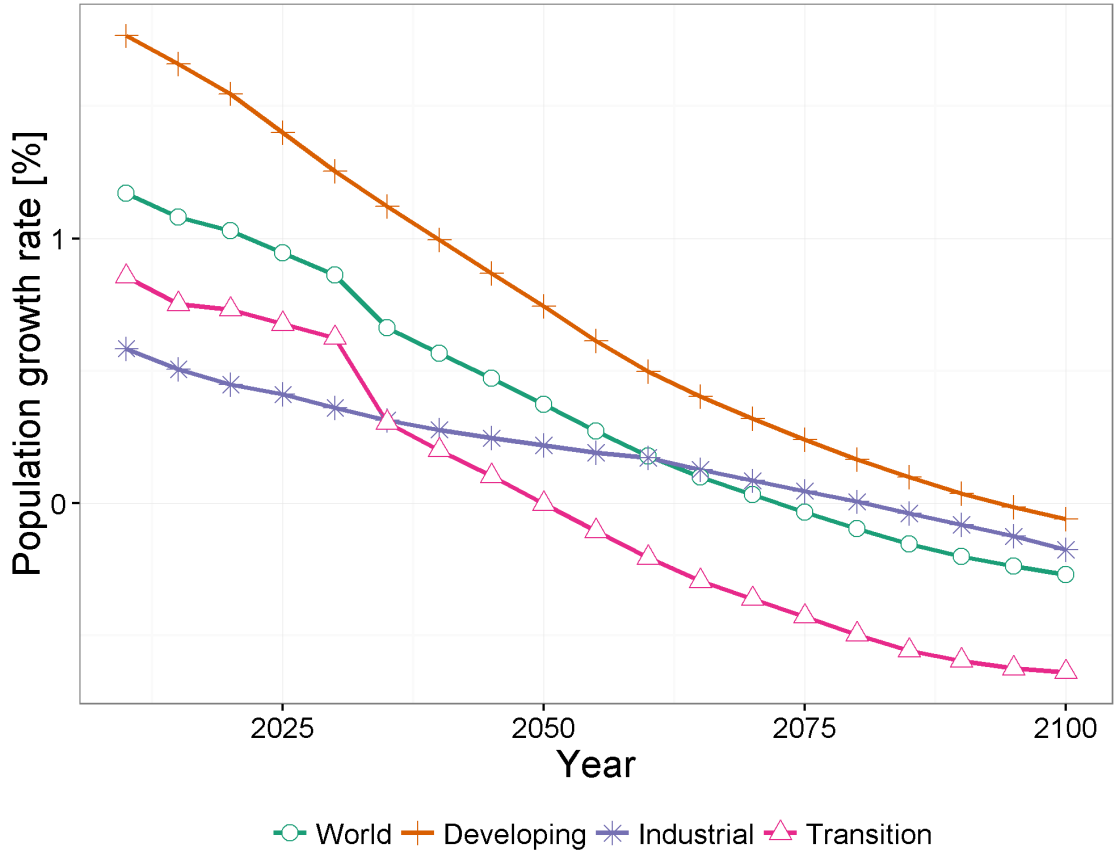
where  $x_t$ , and  $z_t$  are the global GHG emissions in year  $t$ , under 450CO<sub>2</sub>e and INDC450CO<sub>2</sub>e scenarios.  $y_{t0}$  is the emissions gap between 450CO<sub>2</sub>e and INDC450CO<sub>2</sub>e in the year 2030.  $\alpha$  (prescribed 0.5) and  $\beta$  are parameters.  $\beta$  is derived from the emissions integral so that the cumulative emissions are same.

#### 4 GDP growth rate



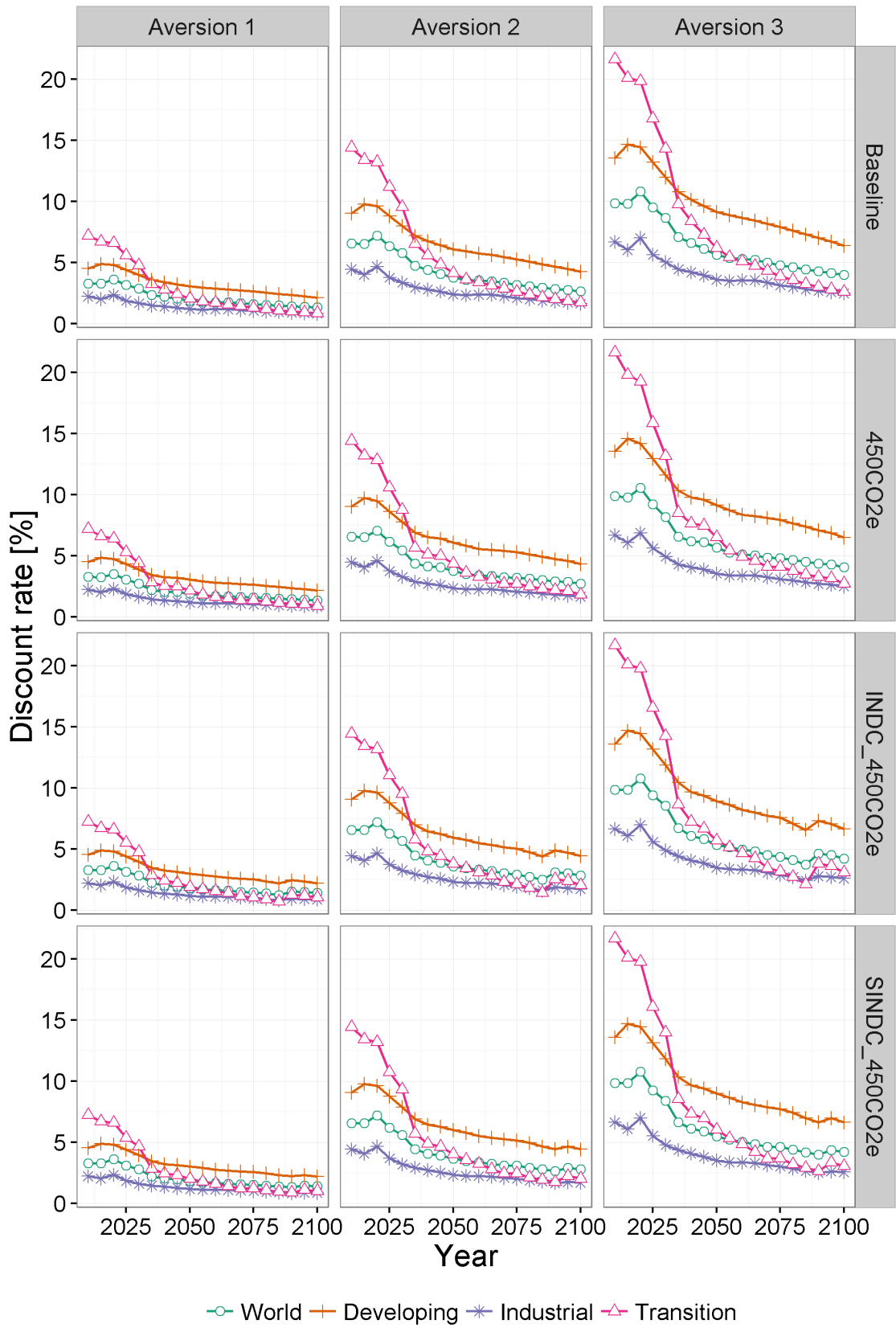
SM Figure 1 Global and regional GDP growth rate through 2100

5 Population growth rate



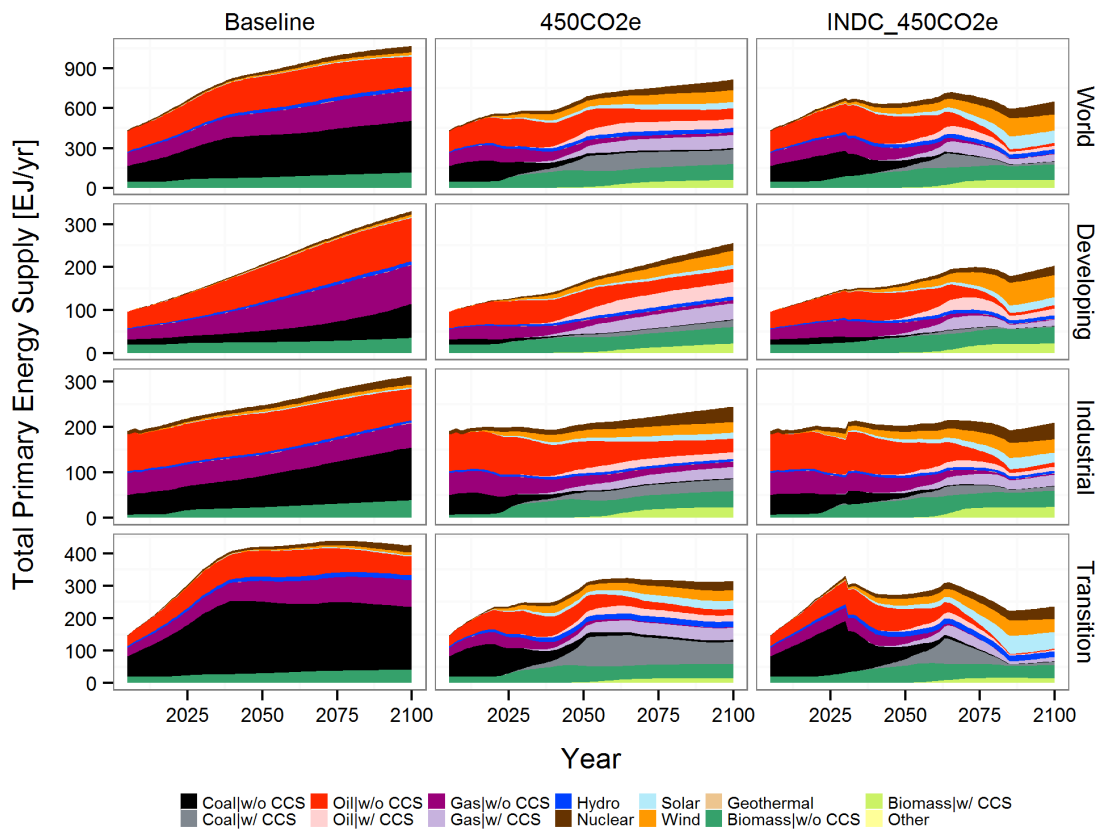
SM Figure 2 Global and regional population growth rate through 2100

6 Discount rate for all scenarios



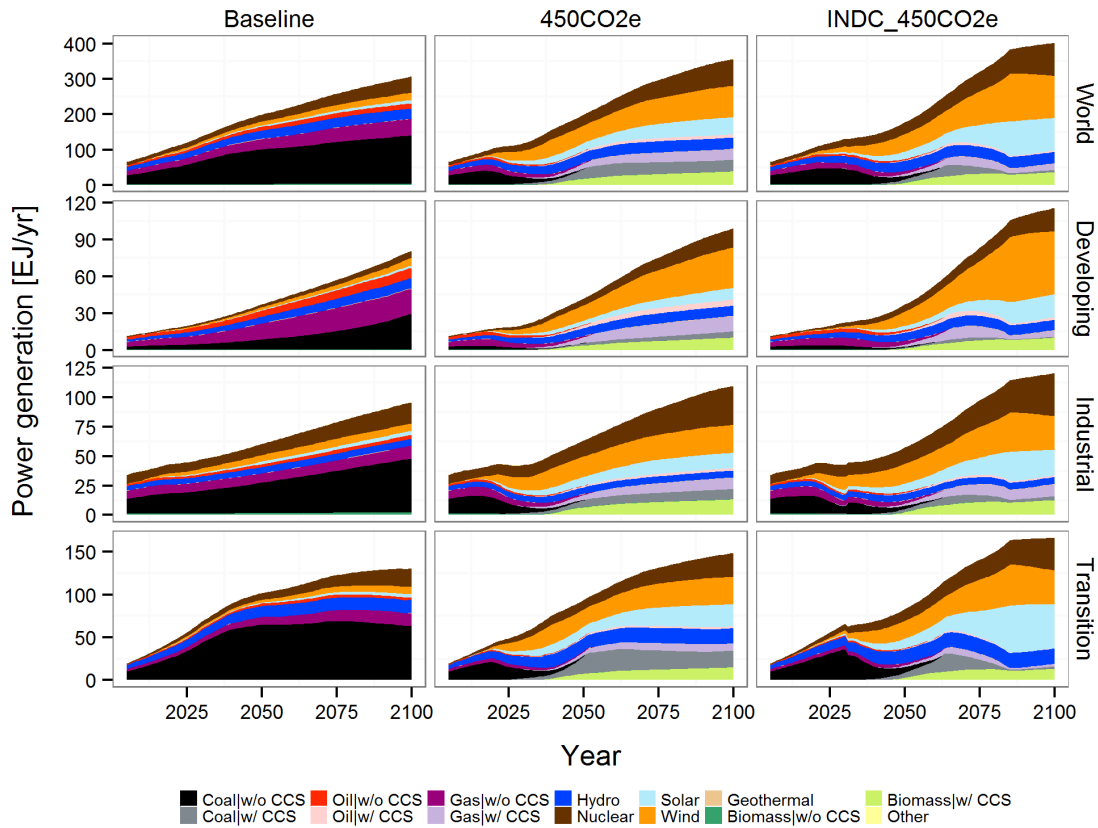
SM Figure 3 Global and regional discount rates for inequality aversions of 1, 2, and 3 in the Baseline, 450CO<sub>2</sub>e, INDC\_450CO<sub>2</sub>e and SINDC\_450CO<sub>2</sub>e scenarios.

## 7 Total primary energy supply



SM Figure 4 Global and regional primary energy supply by energy sources through 2100 for scenarios Baseline, 450CO<sub>2</sub>e and INDC\_450CO<sub>2</sub>e.

## 8 Electricity generation



SM Figure 5 Global and regional power generation by energy sources through 2100 for scenarios Baseline, 450CO2e and INDC\_450CO2e.

## 9 Regression equation in inter-regional analysis

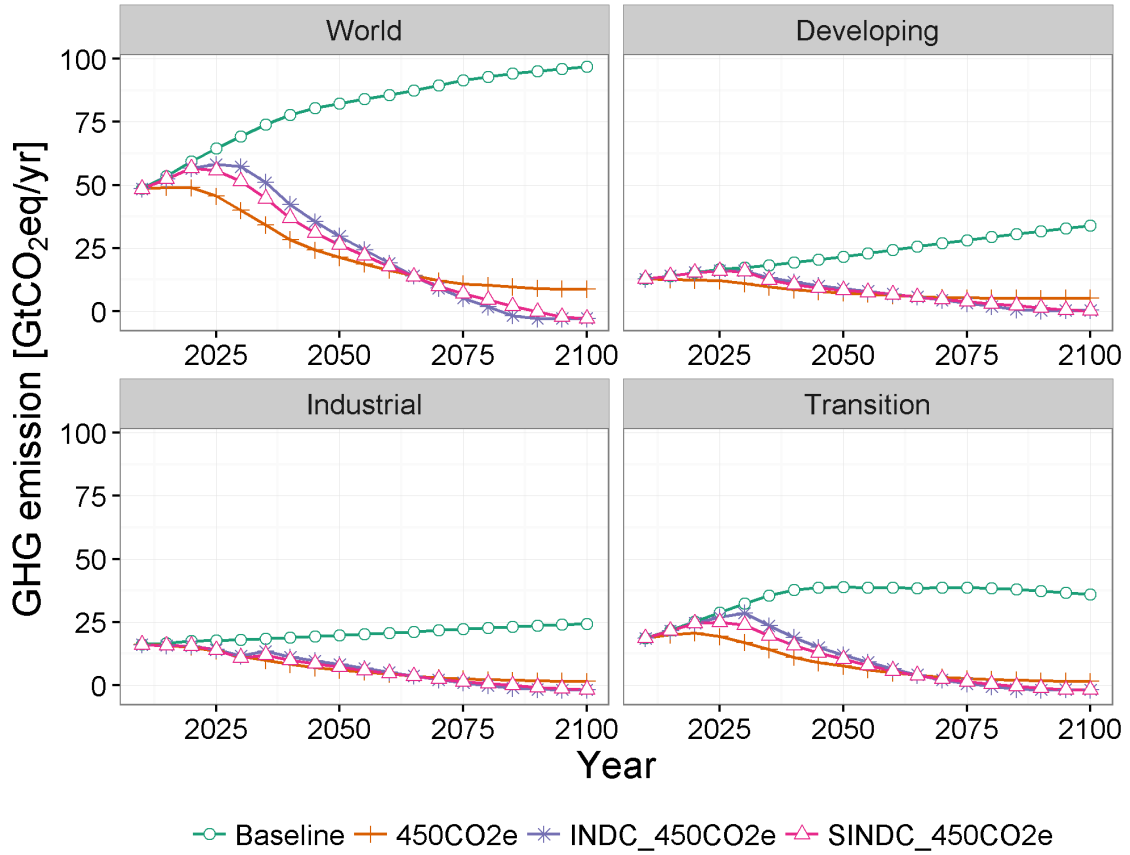
The regression used for the analysis defines the relationship between income per capita and consumption loss. The equation is as follows:

$$Y_r = aX_r + b$$

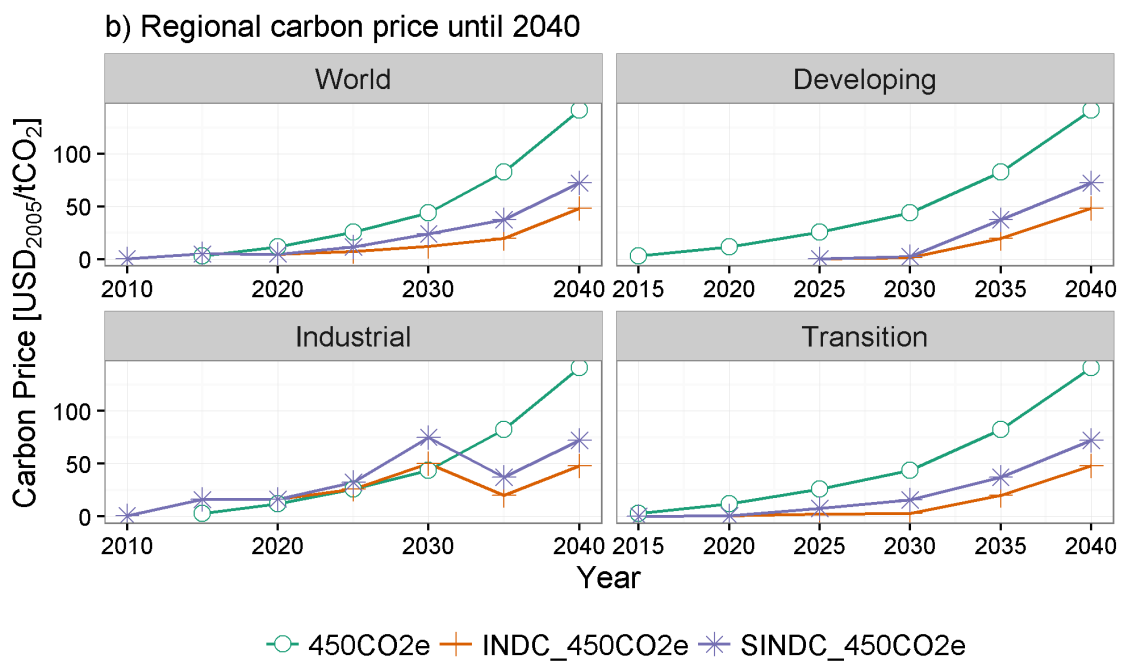
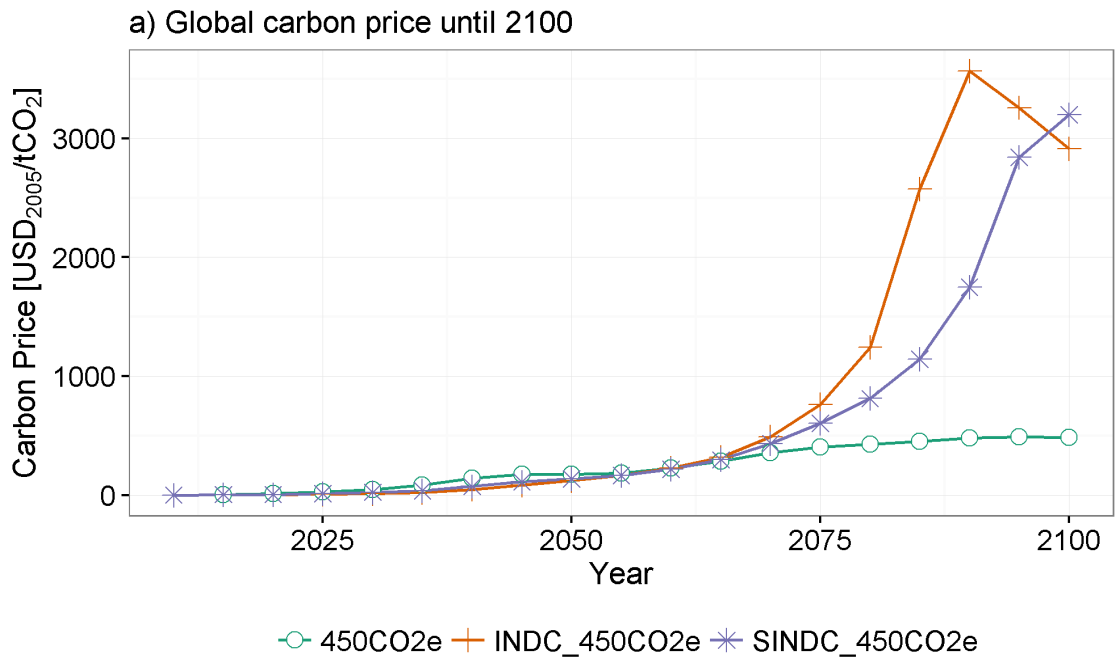
where  $Y_r$  is consumption loss rate and  $X_r$  is income per capita for each region  $r$ ;  $a$  and  $b$  are regressed parameters. Figures 6, 7, and 9 present the situation where  $Y_r$  differs.

For Figure 6, consumption loss was accounted for as net present value discounted by three different aversion parameter assumptions (1, 2, and 3) as  $Y_r$ . For Figure 7, each undiscounted year's consumption loss was regressed for each year for  $Y_r$ . For Figure 9, we used multiple risk aversion parameters for consumption loss and accounted for them as the net present value as  $Y_r$ .

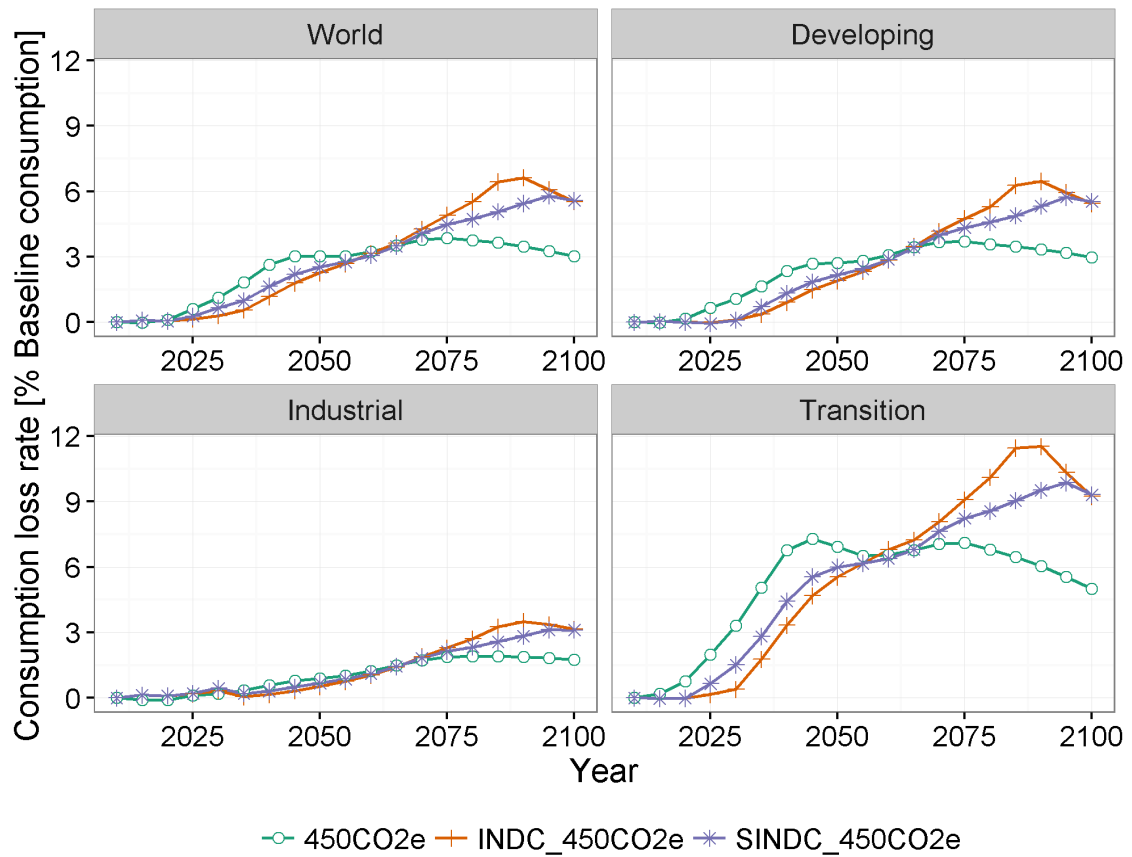




SM Figure 6 Global and regional GHG emission paths for scenarios Baseline, 450CO<sub>2</sub>e, INDC\_450CO<sub>2</sub>e and SINDC\_450CO<sub>2</sub>e.



SM Figure 7 (a) Global carbon price through 2100 and (b) regional carbon price through 2040 for scenarios 450CO<sub>2</sub>e, INDC\_450CO<sub>2</sub>e and SINDC\_450CO<sub>2</sub>e.



SM Figure 8 Global and regional mitigation costs for scenarios 450CO<sub>2e</sub>, INDC\_450CO<sub>2e</sub> and SINDC\_450CO<sub>2e</sub>.

#### References

1. United Nations Framework Convention on Climate Change, (UNFCCC). *INDCs as communicated by Parties*. 2016; Available from: <http://www4.unfccc.int/submissions/indc/Submission%20Pages/submissions.aspx>.