



The role of natural regeneration to ecosystem services provision and habitat availability: a case study in the Brazilian Atlantic Forest

Journal:	<i>Biotropica</i>
Manuscript ID	BITR-15-376.R2
Manuscript Type:	Paper
Date Submitted by the Author:	14-Sep-2016
Complete List of Authors:	Strassburg, Bernardo; Pontifical Catholic University of Rio de Janeiro, , Rio Conservation and Sustainability Science Centre (CSRio), Department of Geography and the Environment;; International Institute for Sustainability Barros, Felipe ; International Institute for Sustainability Crouzeilles, Renato; International Institute for Sustainability Iribarrem, Alvaro; International Institute for Sustainability ; International Institute for Applied Systems Analysis, Ecosystems Services & Management Santos, Juliana; International Institute for Sustainability Silva, Daniel; International Institute for Sustainability Boelsums, Jeronimo Alves-Pinto, Helena; International Institute for Sustainability Feltran-Barbieri, Rafael; International Institute for Sustainability Latawiec, Agnieszka; International Institute for Sustainability
Keywords:	ecosystem services evaluation, natural regeneration, atlantic rainforest, ecological restoration, connectivity

SCHOLARONE™
Manuscripts

1
2 LRH: Strassburg *et al.*
3

4 RRH: Natural Regeneration Impact on Ecosystem Services
5
6
7
8

9 **The role of natural regeneration to ecosystem services provision and**
10 **habitat availability: a case study in the Brazilian Atlantic Forest**
11
12
13
14
15
16

17 **Bernardo B. Strassburg**^{1,2,7}, **Felipe S. Barros**², **Renato Crouzeilles**^{1,2}, **Alvaro Iribarrem**^{1,2,3},
18 **Juliana Silveira dos Santos**², **Daniel Silva**², **Jerônimo B. Sansevero**⁴, **Helena Alves-Pinto**², **Rafael**
19 **Feltran-Barbieri**², and **Agnieszka E. Latawiec**^{1,2,4,5}
20
21
22
23
24
25
26

27 ¹ Rio Conservation and Sustainability Science Centre (CSRio), Department of Geography and the
28 Environment, Pontificia Universidade Catolica do Rio de Janeiro, 22453-900, Rio de Janeiro, Brazil
29
30
31

32 ² International Institute for Sustainability, Estrada Dona Castorina 124, 22460-320, Rio de Janeiro,
33 Brazil
34
35

36 ³ International Institute for Applied Systems Analysis (IIASA), Ecosystem Services and Management
37 Program, Schlossplatz 1, A-2361, Laxenburg, Austria
38
39
40

41 ⁴ Universidade Federal Rural do Rio de Janeiro (UFRRJ), Instituto de Florestas (IF), Departamento de
42 Ciências Ambientais (DCA). BR 465, Km 07, 23890-000, Seropédica, Rio de Janeiro, Brazil
43
44
45

46 ⁵ Opole University of Technology, Department of Production Engineering and
47 Logistics, Luboszycka 5, 45-036 Opole, Poland
48
49

50 ⁶ University of East Anglia, School of Environmental Science, Norwich, NR4 7TJ, UK
51
52
53
54

55 Received 29 December 2015; revision accepted 14 September 2016.
56
57

58 ⁷ Corresponding author; e-mail: b.strassburg@iis-rio.org
59
60

ABSTRACT

Natural regeneration provides multiple benefits to nature and human societies, and can play a major role in global and national restoration targets. However, these benefits are context specific and impacted by both biophysical and socioeconomic heterogeneity across landscapes. Here we investigate the benefits of natural regeneration for climate change mitigation, sediment retention and biodiversity conservation in a spatially explicit way at very high resolution for a region within the global biodiversity hotspot of the Atlantic Forest. We classified current land-use cover in the region and simulated a natural regeneration scenario in abandoned pasturelands, areas where potential conflicts with agricultural production would be minimized and where some early stage regeneration is already occurring. We then modelled changes in biophysical functions for climate change mitigation and sediment retention, and performed an economic valuation of both ecosystem services. We also modelled how land-use changes affect habitat availability for species. We found that natural regeneration can provide significant ecological and social benefits. Economic values of climate change mitigation and sediment retention alone could completely compensate for the opportunity costs of agricultural production over 20 years. Habitat availability is improved for three species with different dispersal abilities, although by different magnitudes. Improving the understanding of how costs and benefits of natural regeneration are distributed can be useful to design incentive structures that bring farmers' decision making more in line with societal benefits. This alignment is crucial for natural regeneration to fulfil its potential as a large-scale solution for pressing local and global environmental challenges.

Key words: climate change mitigation; connectivity; cost-effectiveness; ecological restoration; environment services evaluation, and incentives.

1
2
3
4
5
6
7 TROPICAL FORESTS ARE IRREPLACEABLE TO MAINTAIN BIODIVERSITY, PROVIDE ECOSYSTEM SERVICES
8
9 AND MITIGATE CLIMATE CHANGE AS THEY GLOBALLY HOST AROUND TWO-THIRDS OF THE SPECIES
10
11 (Gardner *et al.* 2010) and half of the total carbon storage of the vegetation (Strassburg *et al.* 2010).
12
13 Nonetheless, tropical forests are increasingly shrinking due to habitat loss, fragmentation and
14
15 degradation as a result of the land-use change for accommodating agriculture and urban expansion
16
17 (Gibbs *et al.* 2010). For example, between 1980 and 2012 more than 100 million ha of tropical forests
18
19 were converted to other land-uses (Gibbs *et al.* 2010, Hansen *et al.* 2013). As a consequence, land-use
20
21 changes may increase carbon emission, reduce sediment retention, and commit species to extinction
22
23 (Foley *et al.* 2007, Gardner *et al.* 2009, Cardinale *et al.* 2012).
24
25
26
27

28 An alternative to reverse these trends is the ecological restoration of forests (Clewell & Aronson
29
30 2007, Menz *et al.* 2013). Ecological restoration is the process of helping degraded or destroyed
31
32 ecosystems (SER 2004). It can be done through passive (*e.g.*, natural regeneration) or active (with
33
34 human intervention) initiatives (Holl & Aide 2011, Chazdon & Uriarte 2016). As natural regeneration
35
36 does not require human intervention, it is a cheaper initiative to increase forest cover (Birch *et al.*
37
38 2010). For example, in tropical regions, large scale restoration have occurred as extensive areas of
39
40 secondary forest are being recovered passively due to rural-urban migration and agricultural
41
42 abandonment (Guariguata & Ostertag 2001, Aide & Grau 2004, Bowen *et al.* 2007, Chazdon *et al.*
43
44 2009, Aide *et al.* 2012, Chazdon & Guariguata 2016). In such cases, natural regeneration occurred in
45
46 lands with low or no loss of income from agriculture (*i.e.*, low opportunity cost). However, the role of
47
48 these secondary regrowth forests in providing ecosystem services and facilitating biodiversity
49
50 maintenance compared to old-growth forests it is an open question (Gibson *et al.* 2011, Lewis *et al.*
51
52 2015, Crouzeilles *et al.* 2016). Thus, to improve the cost-effectiveness of large-scale restoration, it is
53
54 timely, to raise the awareness of the socioeconomic and ecological roles of natural regeneration in
55
56
57
58
59
60

1
2 tropical forests, which remains poorly understood (Gardner *et al.* 2007, Chazdon *et al.* 2009, Chazdon
3 & Guariguata 2016).
4

5
6 A current leading scientific approach to evaluate the benefits of nature to humans is the
7 ecosystem services framework (MEA 2005; Fisher *et al.* 2008, Balmford *et al.* 2011, IPBES 2015).
8
9 Although several alternative and complementary approaches exist (IPBES 2015), the ecosystem
10 services framework provides useful insights to estimate how ecological and socioeconomic functions
11 interact and thus impacts human wellbeing. Natural regeneration impacts the provision of ecosystem
12 services from the global to the local scales (Foley *et al.* 2007). Regrowing forests may sequester high
13 amounts of carbon, helping to mitigate climate change (Bryan *et al.* 2014, Gilroy *et al.* 2014), and at
14 the same time help to stabilize the soil, avoid sediment loss and improve water quality (Ditt *et al.*
15 2010).
16
17

18
19 In addition, natural regeneration also can provide suitable habitats for species (Parry *et al.*
20 2007), and increase species connectivity in the landscape (Chazdon *et al.* 2009). Therefore, to avoid the
21 loss of species at the landscape scale, it is essential to maximize the amount of naturally regenerating
22 areas available for species. Areas available for species can be measured through the habitat availability;
23 an increasingly applied concept that consider not only the habitat amount in the landscape, but also the
24 landscape connectivity, as even large but disconnected habitat cannot be reached and used by
25 individuals (Saura & Pascual-Hortal 2007, Crouzeilles *et al.* 2013; 2014).
26
27

28
29 In all the considerations regarding the provision of ecosystem services made above, the overall
30 added benefit of restoration will depend on the geographical position, area size and shape of the places
31 where natural regeneration is allowed to happen (*e.g.*, Verhagen *et al.* 2016). The benefits of natural
32 regeneration for ecosystem services and habitat availability are context specific and potentially
33 impacted by both biophysical and socioeconomic heterogeneity across landscapes (*e.g.*, Chazdon &
34 Guariguata 2016, Poorter *et al.* 2016).
35
36

37
38 Here we investigate the relative contribution of the natural regeneration to the provision of
39
40
41
42
43
44
45
46
47
48
49
50
51
52
53
54
55
56
57
58
59
60

ecosystem services and biodiversity conservation in a spatially explicit manner, and discuss how this understanding can contribute to improve incentives structure that influence farmers' decision making. Our case study is in the Paraitinga basin, located in the Brazilian Atlantic Forest, one of the five hottest hotspots of conservation (Laurance 2008). To achieve these goals, we first classified the current land-use in the region using a combination of high-resolution (5 m) imagery and field validation. Second, we developed spatially explicit scenarios that consider potential competition for land with agriculture (Latawiec *et al.* 2015) and natural regeneration potential into consideration by selecting only areas of abandoned pasturelands with signs of early stage natural regeneration. Third, we quantified changes in biophysical functions related to two ecosystem services (climate change mitigation and sediment retention), and performed an economic valuation of them by comparing with the opportunity costs of the selected areas. Fourthly, we modelled possible effects of land-use changes on habitat availability for species. Finally, we discuss how incentive structures are important for natural regeneration and how these can be informed by estimates such as the ones we produced. To our knowledge, this is the first study using spatially-explicitly scenarios to inform development of financial benefits from the natural regeneration to ecosystem services, and to reveal how natural regeneration affects the relative contribution of habitat availability for species' with different dispersal ability. This study might offer useful insights to different stakeholders such as researchers, policymakers, and restoration practitioners regarding the benefits and cost-effectiveness of natural regeneration for providing ecosystem services and maintaining biodiversity.

METHODS

In this section we discuss the data inputs and the methodology used to assess the effects of natural regeneration in the functionality of the ecosystem of the Paraitinga basin, and the added economic value of a few of the services it provides. We start by describing the data images used, and the process of classification of the landscape's land-cover, which allows us to define the spatially-explicit baseline,

1
2 and natural-regeneration scenarios. We then compute the additionality of natural regeneration with
3
4 respect to the baseline in terms of sequestered carbon, sediment retention and increase of habitat
5
6 availability. The transition from abandoned grassland to second-growth forest captures large quantities
7
8 of carbon in the form of the increasing biomass of the vegetation, leading to an overall reduction in the
9
10 amount of greenhouse gases in the atmosphere, in the natural regeneration scenario as compared to the
11
12 baseline. Riparian forest areas may also contribute to sediment retention in rivers and may decrease the
13
14 maintenance costs of water dredging purification for consumption. Finally, second-growth forests can
15
16 connect otherwise isolated patches of remaining pristine forest, allowing for a greater number of
17
18 species in those patches to increase their habitat areas, and generally the extinction debt in the
19
20 landscape.
21
22
23
24

25
26 STUDY AREA AND LAND-USE/COVER CLASSIFICATION.— The Paraitinga basin is located in the State of
27
28 São Paulo (-45,6535, -23,4019; -44,6435, -22,7057), at the south-eastern coast of the Brazilian Atlantic
29
30 Forest (FIGURE 1) covered by evergreen tropical forest vegetation type (see Fiaschi & Pirani 2009).
31
32 This basin (with 268,000 ha, *i.e.*, 0,21% of the Brazilian Atlantic Forest) has a strategic function in
33
34 terms of providing water supply for São Paulo and Rio de Janeiro, two highly populated States in the
35
36 Brazil. In Paraitinga basin, habitat loss and fragmentation was driven mainly by socio-economic
37
38 pressures, resulting in a highly-fragmented landscape with different types of land use/cover.
39
40
41
42

43 To identify the main land-use/cover classes in the Paraitinga basin, we carried out a field
44
45 assessment in 155 sites from 14–17 January 2014. Then, we used 12 RapidEye images (RapidEye AG
46
47 2012) from 2012, with a pixel size of 5 m resolution, to map the current land use/cover in a scale of
48
49 1:20,000. We used a segmentation process based on region growing approach and the *Isoseg* algorithm
50
51 to classify the images into 12 classes, and then performed a supervised classification and rectification
52
53 to correct the mapped classes. The 12 classes used were: (1) degraded areas, (2) burned areas, (3) urban
54
55 areas, (4) water bodies, (5) croplands, (6) managed pastures, (7) degraded pastures, (8) abandoned
56
57
58
59
60

1
2 pastures (defined as pasture areas with presence of trees and shrubs.), (9) bare soils, (10) timber
3
4 plantations (dense arboreal area with homogeneous texture), (11) secondary forests (arboreal area with
5
6 heterogeneous texture), and (12) old-growth forests (dense arboreal vegetation). The supervised
7
8 process was guided by a classification key, which shows land uses ground truth and its spectral
9
10 response in the image. After this classification, we carried out the second field assessment in 50 sites,
11
12 randomly selected along the highway that crosses the watershed, from 22–24 October 2014, to validate
13
14 our final map. The map of the current land-use/cover in the region was used as the basis for all
15
16 scenarios and for the evaluation of the socioeconomic and ecological impacts of the natural
17
18 regeneration on ecosystem services and biodiversity conservation. All classifications were performed
19
20 using the software SPRING (Câmara 1996).
21
22
23
24
25
26
27
28
29
30
31
32
33
34
35
36
37
38
39
40
41
42
43
44
45
46
47
48
49
50
51
52
53
54
55
56
57
58
59
60

1
2 LAND USE/COVER SCENARIOS.—We considered three different land use/cover scenarios to calculate the
3
4 socioeconomic and ecological benefits from natural regeneration for two ecosystem services (carbon
5
6 stock and sediment retention) and habitat availability for species with different dispersal abilities
7
8 (Table 1). Scenario 0 represents the land cover of old-growth forests only and was used in the habitat
9
10 availability analysis only. Scenario 1 is the baseline, *i.e.*, the current land use/cover. Thus, scenarios 0
11
12 and 1 differ because the former considers old-growth forests only, while the latter considers old-growth
13
14 and secondary forests. Scenario 2 simulates natural regeneration of abandoned pasture areas. These are
15
16 areas with potential for natural regeneration based on biophysical/ecological and socio-economic
17
18 factors. Biophysically/ecologically these areas already present signs of natural regeneration at early
19
20 successional stages, while socio-economically they would present low opportunity costs. Thus, in this
21
22 scenario we assumed as a premise that abandoned pasturelands would become secondary forests in 20
23
24 years. Thus, scenario 0 and 1 differs from scenario 2 because the latter assumes a land-use change in
25
26 the next 20 years. For the ecosystem services of climate change mitigation and sediment retention we
27
28 compared the land use/cover scenarios 1 and 2, whereas we quantified the ecological benefits of habitat
29
30 availability comparing land use/cover scenarios 0, 1, and 2. Land use/cover scenarios were modelled
31
32 using the software ArcGis 9.3 (ESRI 2008). Table 1 summarizes the scenarios used in each separate
33
34 analysis carried out in this work.
35
36
37
38
39
40
41
42
43
44
45
46
47
48
49
50
51
52
53
54
55
56
57
58
59
60

1
2 ECOSYSTEM SERVICES.—*Climate change mitigation*. The natural regeneration of tropical forests
3
4 sequester carbon dioxide from the atmosphere, which in the context of dangerous anthropogenic
5
6 climate change is a very important global ecosystem service. Recent estimates suggest that this carbon
7
8 sequestration potential of natural regeneration is very high (Chazdon *et al.* 2016). To model this
9
10 climate change mitigation service, we used available data of carbon above and below the soil for each
11
12 land use/cover in our map (Bernoux *et al.* 2006; Cardoso *et al.* 2012; La Scala Júnior *et al.* 2012;
13
14 **Error! Reference source not found.**). We followed the approach suggested by the IPCC Good
15
16 Practice Guidance for LULUCF (Penman, 2003), which is also the approach used by Brazil's National
17
18 Greenhouse Gas Inventory. According to this methodology, net emissions (or sequestration) is
19
20 estimated by attributing carbon stocks to different land use types, and accounting for changes in stocks
21
22 based on changes in land-use. So we aggregated the carbon stock information for each pixel of the
23
24 Paraitinga map in each land use/cover scenario and estimated the changes in carbon stock.
25
26
27
28
29

30
31 In order to estimate the economic value of the additional carbon sequestered by natural
32
33 regeneration in scenario 2, we used three values for the price of carbon and three values for discount
34
35 rates, generating nine distinct estimates. For the price of carbon, we used the value currently adopted
36
37 by Brazil's Amazon Fund of US\$ 5/tCO₂, which is closer to current carbon prices in the absence of
38
39 binding commitments, in addition to US\$ 10/tCO₂ and US\$ 15/tCO₂, values still on the conservative to
40
41 intermediate range regarding estimates for carbon prices in the coming decades (Strassburg *et al.*
42
43 2012). The time horizon considered in this estimate is 20 years, assuming the recovery of 10 percent of
44
45 the forest every two years. This follows the time horizon profile established for environmental
46
47 compliance by the Brazilian Protection of Native Vegetation Law, informally known as the 'Forest
48
49 Code' (Brasil 2012). Finally, we calculated the Net Present Value (NPV) of the climate change
50
51 mitigation service using a conservative discount rate of 7.5 percent per year, which is the long-term
52
53 interest rate in Brazil, in addition to the more widely adopted discount rate for developing countries of
54
55
56
57
58
59
60

1
2 5.0 percent and an optimistic discount rate of 2.5 percent (more in line with those found in developed
3 countries). These analyses were performed in R 2.12 (R Core Development Core Team 2011).
4
5
6

7 *Sediment Retention.* The sediment retention model is directly related to the water services. The
8 excessive soil erosion can reduce the water quality and agricultural productivity, increase flooding, and
9 pollutant transport (Duarte *et al.*, 2016). In relation to sediment retention, water purification is the main
10 service provided by the forests in the study region, as the rivers are not used for navigation. In other
11 regions, however, rivers are vital transportation networks and in that case keeping them navigable
12 would imply additional costs that could be avoided by this same ecosystem service.
13
14
15
16
17
18
19
20
21

22 To model the sediment retention in the Paraitinga region, we used the Sediment Retention
23 model of the software InVEST v. 3.2. The InVEST software is based on the Universal Soil Loss
24 Equation (USLE) and estimates the potential for soil loss depending on geomorphological and climate
25 conditions (Tallis *et al.*, 2013).
26
27
28
29
30
31

32 The USLE uses information such as land use patterns, soil properties, rainfall data, and
33 elevation to provide biophysical parameters to sediment retention model (Equation 1). The InVEST's
34 model considers that in areas where rainfall intensity is high, there is a high chance that soil particles
35 will be transported (Tallis *et al.*, 2013).
36
37
38
39
40
41

$$42 \text{ Eq. 1 } USLE = R \times K \times LS \times C \times P$$

43 Where R is the rainfall erosivity, K is the soil erodibility factor, LS is the slope length-gradient
44 factor, C is the crop-management factor and P is the support practice factor. The result of the USLE is
45 the annual estimation of soil loss due to water runoff, measured in tonne/hectare/year.
46
47
48
49
50

51 The InVEST model calculates directly the LS factor, yet it does not provide all the data
52 necessary to run the model. We estimated the other USLE parameters using Geographic Information
53 System (SIG) tools. To estimate the rainfall erosivity we used the inverse distance-weighted method to
54 interpolate monthly and annual rainfall data from 15 meteorological stations, during 1970–2006 years.
55
56
57
58
59
60

1
2 The Embrapa's soil map, in the scale of 1:5,000.000 was used to generate soil erodibility index. The
3
4 CP factor was calculated using the land use map described above and reference data. These layers are
5
6 presented in Figure 2.
7

8
9 The specific values used to estimate erodibility factor were obtained from reference data
10
11 considering regions with the same biophysical characteristics of our study area (Machado *et al.* 2009,
12
13 Silva *et al.* 2010, Gómez, 2012, Sharp *et al.* 2015, Duarte, 2014, Pacher, 2014, Sinisgalli *et al.* 2014,
14
15 Sousa-Júnior, 2014; Fig. 2). To represent the elevation we used the Digital Elevation Model (DEM), in
16
17 a 30 m resolution, from the NASA.
18
19

20
21 To evaluate the socioeconomic benefits associated with sediment retention, we obtained local
22
23 values from the literature (OIKOS 2015). These values were R\$ 0.0149 (US\$ 0.00383/m³) as the
24
25 regional cost of removing sediments from water in order to achieve the quality needed for domestic
26
27 consumption, a usage flux of 25,00 L/s based on actual water consumption in the region, and a density
28
29 of the sediments suspended in the water of 3.04 ton/m³. The sediment model was applied for all 176
30
31 sub-watersheds.
32
33

34
35 We also estimated what would be the value of the sediment retention ecosystem service if the
36
37 costs for dredging the river were added. In this case, we used dredging costs of US\$ 4/ton (Saad *et al.*,
38
39 2013).
40
41

42
43 *Opportunity Costs.* To calculate the opportunity cost of natural regeneration, we used the land
44
45 prices (R\$/hectare) as a proxy for the long-term expected profit of that land (*e.g.*, Crouzeilles *et al.*
46
47 2015). We used the land price values for different land uses surveyed by FNP (2015) (**Error!**
48
49 **Reference source not found.**)
50
51

1
2 *Habitat availability.*—To analyze the habitat availability for species with different dispersal
3 activities in the landscape, we divided the Paraitinga region into hexagons of 10,000 ha. Only hexagons
4 with more than 50 percent of its area inside the study area were considered in this analysis, totalling 28
5 hexagons (FIGURE 1). These landscape sizes, ranging from 5000 up to 10,000 ha, are consistent with
6 previous studies that quantified the effects habitat loss and fragmentation on biodiversity in the Atlantic
7 Forest (e.g., Crouzeilles *et al.* 2014, Tambosi *et al.* 2014).
8
9

10 For each landscape hexagon, we analysed the habitat availability using the Probability
11 Connectivity index (*PC*). This index considers the habitat amount through patch attribute (in this study
12 patch size) and also the landscape connectivity through species response to habitat configuration (in
13 this study the probability of species dispersal between habitat patches) (Saura & Pascual-Hortal 2007)
14 as follows:
15

$$16 \quad PC = \frac{\sum_{i=1}^n \sum_{j=1}^n a_i a_j p_{ij}^*}{A_L^2}$$

17 where n is the total number of patches, a_i and a_j are the patch attributes, p_{ij}^* is the maximum product
18 probability of all possible paths between i and j , and A_L^2 is the square of the landscape area (Saura &
19 Rubio 2010). The probability of a path from one patch to another is the product of dispersal
20 probabilities for all connections between these two patches. Thus, the maximum product probability is
21 the path with highest connection probability among all possibilities between two patches. *PC* index
22 varies from 0 (no habitat available) to 1 (maximum habitat availability). We calculated *PC* using the
23 software Conefor Sensinode 2.5.8 command line version (www.conefor.org; Saura & Torné 2009).
24
25
26
27

28 As habitat availability is species' specific, we estimated *PC* considering three mean dispersal
29 abilities (100, 1000, and 3000 m) based on the review of Crouzeilles *et al.* (2010) for Atlantic Forest
30 species. To represent these mean dispersal ability values, we considered a 50 percent probability of
31 species direct dispersal between two patches, for example, a species with 100 m dispersal ability has 50
32 percent probability to cross patches that are 100 m apart. We used a one-way analysis of variance
33
34
35
36
37
38
39
40
41
42
43
44
45
46
47
48
49
50
51
52
53
54
55
56
57
58
59
60

(ANOVA) followed by the Tukey *post-hoc* test to identify significant differences in habitat availability among the scenarios of land use/cover for each simulated species. This analysis was performed in R 2.12 (R Core Development Core Team 2011).

RESULTS

LAND-USE/COVER.— The Paraitinga basin is occupied predominantly by pastures, with 30% of the region being managed pasturelands, 21 percent degraded pasturelands and 10% abandoned pasturelands showing evidence of natural regeneration – totalling 61% of the basin area (Table 4). The second predominant land use is represented by old-growth forest (20.6%), while secondary forests cover 6% of the study area. In the scenario 2, the abandoned pastures were allowed to recover naturally, increasing the cover of secondary forest to 15.4% (Table 4).

ECOSYSTEM SERVICES.— *Climate change mitigation.* Allowing the 24,033 hectares of abandoned pastures to become secondary forests would sequester 1.68 million tonnes of carbon, or 6.18 million tonnes of CO₂ (Table 5) in 20 years. The economic value of this climate change mitigation service varies from US\$ 21.2 million (US\$ 882/restored hectare) to US\$ 81.1 million (US\$ 3374/restored hectare) depending on the price of carbon and discount rate used. For an intermediate scenario (US\$ 10 per tonne of CO₂ and a discount rate of 5%), the value is US\$ 47.7 million (US\$ 1,981/restored hectare) (Table 6).

Sediment Retention. Transitioning from the current land-use to one where abandoned pasturelands are allowed regenerate (Scenario 2) would reduce sediment load into rivers by 570,000 tonnes annually (Table 7). On one extreme, dredging these sediments out of the river would cost US\$1.17 million annually, with a net present value (using a time horizon of 20 years and a discount

1
2 rate of 5%) of US\$ 14.61 million (US\$ 608/hectare restored). On the other hand, rivers in the region
3
4 are currently not used for transportation or electricity generation, with the main direct use being
5
6 household consumption. The natural regeneration of abandoned pasturelands would reduce the costs of
7
8 purifying the water that is actually consumed every year by US\$ 810 per year or a NPV of US\$ 10.094
9
10 (US\$ 0.37 per restored hectare).
11
12

13
14 *Opportunity Costs.* The opportunity costs of converting abandoned pasturelands into secondary
15
16 forests were conservatively estimated at US\$ 67.24 million, based on the land price per hectare for
17
18 degraded pasturelands. In reality the selected areas already show signs of abandonment and it is likely
19
20 that the real opportunity costs are lower than the ones estimated here.
21
22

23
24 *Habitat availability.* The habitat availability varied among the scenarios of land use/cover
25
26 (scenarios 0, 1 and 2) and such result was affected by species dispersal ability (100, 1000 and 3000 m)
27
28 (Fig. 3). For species with short dispersal ability (100 m), all scenarios differed significantly from each
29
30 other ($P = 0.04$ for S0–S1 and $P < 0.001$ for S0–S2 and S1–S2) (Fig. 3). Secondary forests increased
31
32 substantially habitat availability in relation to old-growth forests (scenario 0 vs. scenario 1), while
33
34 natural regeneration of abandoned pasturelands substantially increased habitat availability in relation to
35
36 both old-growth forests only and old-growth + secondary forests (scenario 2 vs. scenario 0 and 1,
37
38 respectively). For species with intermediate and large dispersal ability (1000 and 3000 m, respectively),
39
40 only scenarios S0 and S2, and S1 and S2 differed significantly ($P < 0.001$ in all cases). Thus, for these
41
42 species natural regeneration in abandoned pasturelands substantially increased habitat availability in
43
44 relation to both old-growth forests only and old-growth + secondary forests (scenario 2 vs. scenario 0
45
46 and 1, respectively). For species with intermediate and large dispersal abilities, there was no
47
48 complementary value of secondary to old-growth forests (scenario 0 vs. 1) in terms of habitat
49
50 availability for species.
51
52
53
54
55
56
57
58
59
60

DISCUSSION

Our results show that the natural regeneration of abandoned pasturelands can improve the provision of ecosystem services and habitat availability. Over 20 years, the economic value of the two ecosystem services for which we performed economic valuation, climate change mitigation and sediment retention (US\$ 882 to US\$ 3982), can already account for 31.5–142.0 percent of the opportunity costs in the Paraitinga region. Our central estimate for the climate change mitigation service alone would account for 71 percent of the opportunity costs. In addition, secondary forests (especially for species with short dispersal ability) and natural regeneration of abandoned pasturelands can complement the value of old-growth forests in terms of habitat availability for species with different dispersal abilities.

It is broadly recognized that habitat availability increases as species' dispersal abilities increases (*e.g.*, Saura & Rubio 2010; Crouzeilles *et al.* 2013; 2014; 2015). Nonetheless, lack studies showing how species' dispersal ability affects the relative contribution of the natural regeneration to habitat availability in landscapes; the main study result we present in this paper. In the Paraitinga region, even the small naturally-regenerated forests that may arise as pasturelands are abandoned, would increase habitat availability for all species, although to different extents. Only for the less mobile species (100 m of dispersal ability) does the contribution of secondary forest significantly improve the amount of habitat availability when compared to scenario 0 (considering old-growth forests only). It suggests that those species are more strongly affected by the spatial configuration of secondary forests. Many empirical studies have shown that species with short dispersal ability are more sensitive to habitat loss and fragmentation (Awade *et al.* 2012; Martensen *et al.* 2012; Almeida-Gomes *et al.* 2016). It is important to highlight, however, that the dispersal ability is often correlated with home range and body size (Whitmee & Orme 2012), which may affect the size of the minimum naturally-regenerated forest used by species, potentially impacting habitat availability.

It is also important to mention that the effects of natural regeneration could be even more

1
2 effective if allocation were spatially optimized. In that respect, our results show the importance of
3
4 planning landscape restoration in a way that maximizes the increment of habitat availability (*e.g.*,
5
6 Tambosi *et al.* 2014; Crouzeilles *et al.* 2015). Natural regeneration tends to occur in areas with low
7
8 socioeconomic gains and high ecological resilience (Holl & Aide 2011), yet it may not result in the
9
10 highest increment for habitat availability. On the other hand, active restoration, if spatially planned to
11
12 occur in areas with the highest benefits for habitat availability, can greatly increase the cost-effectives
13
14 of this initiative. Crouzeilles *et al.* (2015), for example, showed that planning landscape restoration
15
16 considering habitat availability can result in the strategy with the highest benefits to biodiversity per
17
18 unit cost in the Brazilian Atlantic Forest. Thus, our simulations demonstrate how landscape context can
19
20 affect the ecological value of the natural regenerating secondary forests for biodiversity persistence (a
21
22 highlighted question by Bowen *et al.* 2007). It also provides insights on how to integrate land-use
23
24 change modelling and habitat availability analysis – a scarce result to be found in up-to-date literature
25
26 related to landscape connectivity (Ayram *et al.* 2015).
27
28
29
30
31

32
33 Spatial optimization is also important when considering scaling up forest restoration and to
34
35 avoid potential displacement. Such displacement (or leakage) of agricultural production could result in
36
37 pressure for deforestation in other regions (Latawiec *et al.* 2015). In this regard, a properly planned
38
39 large-scale restoration in the Paraitinga watershed has a high potential for avoiding this issue, since the
40
41 current stocking rates of pasturelands in the region range from 0.8 to 1.4 Animal Units (AU) per
42
43 hectare, while the potential stoking rate can be as high as 3.79 AU/ha (Alves-Pinto *et al.* in press).
44
45 Increasing productivity in the region to half of the potential would be enough to spare 76 thousand
46
47 hectares of pasture area for other uses (Alves-Pinto *et al.* in press). This means that improvement in the
48
49 cattle-ranching practices alone could accommodate all the natural regeneration proposed in the scenario
50
51
52
53
54 2.

55
56 Our study further illustrates an important aspect about the valuation of ecosystem services: the
57
58 same biophysical service can lead to very different economic values, depending exclusively on how
59
60

1 beneficiaries relate to the service in question. In the Paraitinga basin, the utility of increased sediment
2 retention as a consequence of natural regeneration of abandoned pasturelands is limited to avoiding the
3 need for water purification for household consumption. This represents a very small fraction of the
4 river flow, yielding a value of US\$ 0.37 per naturally-regenerated hectare. But in other basins where
5 the rivers are used for navigation or for hydroelectric power, the economic value of this service could
6 reach as high as US\$ 608 per restored hectare.
7
8
9
10
11
12
13
14
15

16 Our results can also help in designing a payment for ecosystem services (PES) scheme. One key
17 element is the spatial distribution patterns of sources of services and the associated beneficiaries, which
18 should inform the allocation of incentives and costs of PES schemes. It can also suggest the potential of
19 different ecosystem services to finance a PES scheme. In the case analyse don this study, although the
20 potential for such a scheme based on local ecosystem services might be relatively low, there is a very
21 high potential for such a scheme based on the global ecosystem service of climate change mitigation
22 (Tables 5 & 6). Therefore, our results reinforce recent outcomes that demonstrated the potential of
23 secondary forests in the Neotropics for carbon sequestration (Poorter *et al.* 2016) and, as a consequence
24 contribute to climate change mitigation (Chazdon *et al.* 2016). Such a scheme could provide important
25 incentives for natural regeneration in the region.
26
27
28
29
30
31
32
33
34
35
36
37
38
39

40 The incentives to which a farmer is exposed, however, goes beyond direct and explicit financial
41 incentives. The revised version of the Brazilian 'Forest Code' will make public agricultural credit
42 conditional to environmental compliance with the Forest Code. Among other requirements, the Forest
43 Code demands that farmers in the Atlantic Forest restore and/or preserve 20 percent of their farm's
44 total area as Legal Reserve, also including Areas of Permanent Preservation (APP's) that considers
45 riparian areas, hilltop and steep slopes (Brancalion *et al.* 2016, Latawiec *et al.* 2016). Recent estimates
46 suggest that up to six million hectares would need to be restored in the Atlantic Forest alone (Soares-
47 Filho *et al.* 2014). Farmers must provide plans for restoring their possible forest deficits but active
48 ecological restoration (*e.g.*, complete planting) in the country is costly, estimated around US\$
49
50
51
52
53
54
55
56
57
58
59
60

1
2 5150.00/ha, involving seedling acquisition, replanting and monitoring (Rodrigues *et al.* 2011). If an
3
4 area equivalent to the abandoned pastures was actively restored, instead of naturally regenerated, it
5
6 would cost US\$ 124 million. Therefore, natural regeneration may offer a cheaper alternative to comply
7
8 with the Forest Code, and have a positive impact on the provision of ecosystem services in the region.
9
10

11 A related important aspect when designing incentive schemes is that unintended consequences
12
13 of ‘positive’ incentives should always be taken into account. For instance, natural regeneration was
14
15 suppressed in the Atlantic Forest when the Atlantic Rainforest Law (Brasil 2006) was introduced. The
16
17 Law prohibited the clearing of areas on which intermediate natural regeneration was observed.
18
19 Although intended to help to foster natural regeneration, an unintended result was that the farmers
20
21 started regularly burn the initial stages of naturally-regenerating areas in order to avoid losing the right
22
23 to use that land as pasture or croplands. Similar examples can be found elsewhere (Román-Dañobeytia
24
25 *et al.* 2014).
26
27
28
29

30 In this study we included some elements of uncertainty in our estimation of climate change
31
32 mitigation service (by using different prices of carbon and discount rates). Future studies could include
33
34 improved treatment of uncertainties associated with the biophysical and socioeconomic processes
35
36 involved.
37
38
39
40

41 CONCLUSIONS

42
43 Natural regeneration provides a range of benefits to human societies and it may play a key role if
44
45 ambitious global and national restoration targets (*e.g.*, the New York Declaration on Forests and
46
47 Atlantic Forest Pact, respectively) are realized (*e.g.*, Chazdon *et al.* 2016). Our analysis shows the
48
49 importance of improving the understanding of costs and benefits of restoration, especially natural
50
51 regeneration, and showed how this can affect the provision of ecosystem services and biodiversity
52
53 conservation in a spatially-explicit model. The biodiversity conservation cannot be properly valued in
54
55 financial terms as its main benefit is providing the ecological base for all the other ecosystem services,
56
57
58
59
60

1
2 *e.g.*, through species seeds dispersal. But an improved understanding of current and potential incentive
3
4 structures, financially explicit, is crucial to ecosystem services, so that societal benefits can be better
5
6 aligned with those of the final decision maker, the farmer. This alignment is essential for natural
7
8 regeneration to realize its promise of providing cost-effective benefits to nature and human societies at
9
10 large scales.
11
12

13
14
15
16
17
18
19
20
21
22
23
24
25
26
27
28
29
30
31
32
33
34
35
36
37
38
39
40
41
42
43
44
45
46
47
48
49
50
51
52
53
54
55
56
57
58
59
60

For Peer Review Only

LITERATURE CITED

- 1
2
3
4 ALMEIDA-GOMES M., PREVEDELLO J.A., & CROUZEILLES R. 2016. The use of native vegetation as a
5
6 proxy for habitat may overestimate habitat availability in fragmented landscapes. *Landscape*
7
8 *Ecology*. 31: 711-719.
9
10
11 ALVES-PINTO, H. STRASSBURG, B. B. N., LATAWIEC, A., BARROS, F. S., RANGEL, M. C.,
12
13 SANSEVERO, J. B. B., IRRIBAREM, A., BARBIERI, R. F., LEMGRUBER, L, Conciliating
14
15 rural development and ecological restoration: strategies and policy recommendations for the
16
17 Brazilian Atlantic Forest. *Land Use Policy*, *in press*.
18
19
20 ARONSON J AND ALEXANDER S. 2013. Ecological restoration is now a global priority: time to roll up
21
22 our sleeves. *Restor Ecol* 21:293–96.
23
24
25
26
27 AWADE M, BOSCOLO D, METZGER JP (2012) Using binary and probabilistic habitat availability indices
28
29 derived from graph theory to model bird occurrence in fragmented forests. *Landscape Ecol*
30
31 27:185-198
32
33
34
35 AYRAM C.A.C, MENDOZA M.E., ETTER A., & SALICRUP D.R.P. 2015 Habitat connectivity for
36
37 conservation - a review of recent studies. *Progress in Physical Geography*. DOI:
38
39 10.1177/0309133315598713
40
41
42
43 BAILLIE, J.E.M., HILTON-TAYLOR C., STUART S.N. (eds.) 2004. 2004 IUCN Red List of Threatened
44
45 Species. A Global Species Assessment. Gland: IUCN.
46
47
48 BERNOUX, M., CERRI, C. C., CERRI, C. E. P., NETO, M. S., METAY, A., PERRIN, A-S., SCOPEL,
49
50 E., TANTELY, R., BLAVET, D., PICCOLO, M. C., PAVEI, M., MILNE, E. 2006. Crooping
51
52 systems, carbon sequestration and erosion in Brazil: a review. *Agron. Sustain*. 26: 1–8.
53
54
55
56 BOWEN, M. E., MCALPINE, C. A., HOUSE, A. P. N. & SMITH, G. C. 2007. Regrowth forests on
57
58 abandoned agricultural land: A review of their habitat values for recovering forest fauna. *Biol*.
59
60

- 1
2 Conserv. 140, 273–296.
3
4
5 BOWEN, M.E., MCALPINE, C.A., HOUSE, A.P.N. & SMITH, G.C. (2007) Regrowth forests on abandoned
6
7 agricultural land: a review of their habitat values for recovering forest fauna. *Biological*
8
9 *Conservation*, **140**, 273-296.
10
11
12 BRANCALION, P., D. SCHWEIZER, U. GAUDARE, J. MANGUEIRA, F. LAMONATO, F. FARAH, . . . R.
13
14 RODRIGUES. 2016. Balancing economic costs and ecological outcomes of passive and active
15
16 restoration in agricultural landscapes: the case of Brazil. . *Biotropica* 48.
17
18
19
20 BRASIL. 2012. Lei número 12,651 15 de maio, 2012. Regulamento da Proteção da vegetação nativa.
21
22 Electronic Database accessible at http://www.planalto.gov.br/ccivil_03/_ato2011-
23
24 [2014/2012/lei/112651.htm](http://www.planalto.gov.br/ccivil_03/_ato2011-2014/2012/lei/112651.htm)
25
26
27
28 CARDINALE BJ, DUFFY JE, GONZALEZ A, et al. 2012. Biodiversity loss and its impact on humanity.
29
30 *Nature* 486: 59–67.
31
32
33 CARDOSO, D. J.; GARRASTAZU, M. C.; LACERDA, A. E. B. DE; HIGA, R. C. V.; ROSOT, M. A. D.
34
35 2012. Avaliação das variáveis e disponibilidade de informações do modelo de estoque de carbono
36
37 do aplicativo InVEST. Embrapa. Electronic Database accessible at
38
39 [https://www.embrapa.br/busca-de-publicacoes/-/publicacao/934758/avaliacao-das-variaveis-e-](https://www.embrapa.br/busca-de-publicacoes/-/publicacao/934758/avaliacao-das-variaveis-e-disponibilidade-de-informacoes-do-modelo-de-estoque-de-carbono-do-aplicativo-invest)
40
41 [disponibilidade-de-informacoes-do-modelo-de-estoque-de-carbono-do-aplicativo-invest](https://www.embrapa.br/busca-de-publicacoes/-/publicacao/934758/avaliacao-das-variaveis-e-disponibilidade-de-informacoes-do-modelo-de-estoque-de-carbono-do-aplicativo-invest)
42
43
44
45
46 CHAZDON, R. L. (2008). Beyond deforestation: restoring forests and ecosystem services on degraded
47
48 lands. *Science (New York, N.Y.)*, 320(5882), 1458–1460. <http://doi.org/10.1126/science.1155365>
49
50
51 CHAZDON, R. L., E. N. BROADBENT, D. M. A. ROZENDAAL, F. BONGERS, A. M. A. ZAMBRANO, T. M.
52
53 AIDE, . . . L. POORTER. 2016. Carbon sequestration potential of second-growth forest regeneration
54
55 in the Latin American tropics. *Science Advances* 2: e1501639.
56
57
58
59 CHAZDON, R. L., AND M. R. GUARIGUATA. 2016. Natural regeneration as a tool for large-scale forest
60

1 restoration in the tropics: prospects and challenges *Biotropica* 48: xxx-xxx.

2
3
4
5 CHAZDON, R. L., C. A. PERES, D. DENT, D. SHEIL, A. E. LUGO, D. LAMB, . . . S. E. MILLER. 2009. The
6
7 potential for species conservation in tropical secondary forests. *Conservation Biology* 23: 1406-
8
9 1417.

10
11
12 CHAZDON, R. L., AND M. URIARTE. 2016. Natural regeneration in the context of large-scale forest and
13
14 landscape restoration in the tropics. *Biotropica* 48: xxx-xxx.

15
16
17
18
19 CROUZEILLES R, LORINI ML, GRELLE CEV 2010. Deslocamento na matriz para espécies da Mata
20
21 Atlântica e a dificuldade da construção de perfis ecológicos. *Oecologia Australis* 14:875–903
22

23
24 CROUZEILLES R, LORINI ML, GRELLE CEV 2013. The importance of using sustainable use protected
25
26 areas for functional connectivity. *Biological Conservation* 159:450–457.
27

28
29
30 CROUZEILLES R, PREVEDELLO JA, FIGUEIREDO MSL, LORINI ML, GRELLE CEV 2014. The effects of the
31
32 number, size and isolation of patches along a gradient of native vegetation cover: how can we
33
34 increment habitat availability? *Landscape Ecol* 29:479–489.
35

36
37 CROUZEILLES R., CURRAN M., FERREIRA M.S., LINDENMAYER D.B., GRELLE C.E.V. & REY BENAYAS
38
39 J.M. 2016. A global meta-analysis on the ecological drivers of forest restoration success. *Nature*
40
41 *Communications*. DOI: 10.1038/ncomms11666
42

43
44
45 CROUZEILLES, R., BEYER, H.L., MILLS, M., GRELLE, C.E.V. & POSSINGHAM, H.P. 2015. Incorporating
46
47 habitat availability into systematic planning for restoration: a species-specific approach for
48
49 Atlantic Forest mammals. *Diversity and Distributions*, 21, 1027–1037
50

51
52
53 DITT, E., S. MOURATO, J. GHAZOU, and J. KNIGHT. 2010. Forest conversion and provision of
54
55 ecosystem services in the Brazilian Atlantic forest. *L. Degrad. Dev.* 603: 591–603. Available at:
56
57 <http://onlinelibrary.wiley.com/doi/10.1002/ldr.1010/full> [Accessed January 7, 2014].
58
59
60

- 1
2 DUARTE, G. T. 2014. Ecosystem services modeling as a tool for defining priority areas for
3
4 conservation. MSc. Dissertation, Universidade Federal de Minas Gerais, Belo Horizonte, Brazil.
5
6
7
8 ESRI 2008. ArcView 9.3. Redlands, California, USA.
9
10
11 FIASCHI, P., and J. R. PIRANI. 2009. Review of plant biogeographic studies in Brazil. *J. Syst. Evol.* 47:
12
13 477–496. Available at: <http://doi.wiley.com/10.1111/j.1759-6831.2009.00046.x> [Accessed May
14
15 22, 2013].
16
17
18 FOLEY JA ET al. 2007 Amazonia revealed: forest degradation and loss of ecosystem goods and services
19
20 in the Amazon Basin. *Front. Ecol. Environ.* 5, 25–32. (doi:10.1890/1540-9295(2007)5[25:
21
22 ARFDAL]2.0.CO;2)
23
24
25
26 GARDNER TA, BARLOW J, CHAZDON R, EWERS RM, HARVEY CA, PERES CA, SODHI NS. 2009 Prospects
27
28 for tropical forest biodiversity in a human-modified world. *Ecol. Lett.* 12, 561–582.
29
30 (doi:10.1111/j.1461-0248.2009.01294.x)
31
32
33
34 GARDNER TA, BARLOW J, SODHI NS, PERES CA. 2010 A multi-region assessment of tropical forest
35
36 biodiversity in a human-modified world. *Biol. Conserv.* 143, 2293–2300.
37
38 (doi:10.1016/j.biocon.2010.05.017)
39
40
41
42 GARDNER, T. A., J. BARLOW, L. W. PARRY, AND C. A. PERES. 2007. Predicting the uncertain future of
43
44 tropical forest species in a data vacuum. *Biotropica* 39: 25–30.
45
46
47
48 GIBBS HK, RUESCH AS, ACHARD F, CLAYTON MK, HOLMGREN P, RAMANKUTTY N, FOLEY JA. 2010
49
50 Tropical forests were the primary sources of new agricultural land in the 1980s and 1990s. *Proc.*
51
52 *Natl Acad. Sci. USA* 107, 16 732–16 737. (doi:10.1073/pnas.0910275107)
53
54
55
56
57
58
59
60 GOMÉZ, J. D. P. 2012. Estimativa de erosão pela equação universal de perda de solo (USLE)e
transferência de sedimentos para todo território brasileiro. 2012. MSc. Dissertation. Universidade
de São Paulo, Escola Superior de Agricultura “Luiz de Queiroz”. Piracicaba, Brazil.

- 1
2 GREENWOOD, N. N., EARNSHAW, A. 1997. Chemistry of the Elements. Butterworth – Heinemann.
3
4 Oxford, Amsterdam, Boston, London, New York, Paris, San Diego, San Francisco, Singapore,
5
6 Sydney, Tokyo.
7
8
9
10 GUARIGUATA, M. R., & OSTERTAG, R. (2001). Neotropical secondary forest succession: Changes in
11
12 structural and functional characteristics. *Forest Ecology and Management*, 148(1-3), 185–206.
13
14 [http://doi.org/10.1016/S0378-1127\(00\)00535-1](http://doi.org/10.1016/S0378-1127(00)00535-1)
15
16
17 HANSEN, M. C., POTAPOV, P. V, MOORE, R., HANCHER, M., TURUBANOVA, S. A, TYUKAVINA, A.,
18
19 TOWNSHEND, J. R. G. (2013). High-resolution global maps of 21st-century forest cover change.
20
21 *Science (New York, N.Y.)*, 342(6160), 850–3. <http://doi.org/10.1126/science.1244693>
22
23
24
25 JOERN FISCHER, & LINDENMAYER, AND D. B. (2007). Landscape modification and habitat
26
27 fragmentation: a synthesis. *Global Ecology and Biogeography*, 1–16.
28
29 <http://doi.org/10.1111/j.1466-8238.2006.00287.x>
30
31
32
33 LA SCALA JÚNIOR, N., DE FIGUEIREDO, E. B. PANOSO, A. R. A review on soil carbon
34
35 accumulation due to the management change of major Brazilian agricultural activities. 2012.
36
37 *Braz. J. Biol.* 72: 775-785.
38
39
40 LATAWIEC, A. E., R. CROUZEILLES, P. H. S. BRANCALION, R. R. RODRIGUES, J. B. B. SANSEVERO, J. S.
41
42 DOS SANTOS, . . . B. B. N. STRASSBURG. 2016. Natural regeneration and biodiversity: a global
43
44 meta-analysis and implications for spatial planning. *Biotropica* 48: xxx-xxx.
45
46
47
48 MACHADO, M. L., ALVES, J. S., GOMES, I., VIEIRA, E. M., SIMÃO, M. L. R., NAIME, U. J.
49
50 Levantamento sistemático dos fatores da equação universal de perdas de solo (USLE) para o
51
52 delineamento de áreas com potencial erosivo da bacia PN1-IGAM, Minas Gerais (resultados
53
54 parciais). In: SIMPÓSIO BRASILEIRO DE SENSORIAMENTO REMOTO, 14. (SBSR), 2009,
55
56 Natal. Anais... São José dos Campos: INPE, 2009. p. 7733-7739. DVD, On-line. ISBN 978-85-
57
58
59
60

1
2 17-00044-7.
3
4

5 MARTENSEN AC, RIBEIRO MC, BANKS-LEITE C, PRADO PI, METZGER JP (2012) Associations of forest
6 cover, fragment area, and connectivity with Neotropical understory bird species richness and
7 abundance. *Cons Biology* 26:1100-1111
8
9

10
11
12 MYERS, N., Mittermeier, R. A., Mittermeier, C. G., da Fonseca, G. A. B., & Kent, J. (2000).
13 Biodiversity hotspot for conservation priorities. *Nature*, 403(6772), 853–858.
14
15 <http://doi.org/10.1038/35002501>
16
17

18
19
20 OIKOS 2015. Projeto PSA Água Vale do Paraíba. Available at:
21
22 <http://institutooikos.org.br/projetos/DOCUMENTOFINALPSAAGUAVALEDOPARAIBA.pdf>
23
24 [Accessed November 5, 2015]
25
26

27
28 OLIVEIRA-FILHO, A., AND M. FONTES. 2000. Patterns of Floristic Differentiation among Atlantic
29 Forests in Southeastern Brazil and the Influence of Climate. *Biotropica* 32: 793–810. Available
30 at: <http://onlinelibrary.wiley.com/doi/10.1111/j.1744-7429.2000.tb00619.x/abstract> [Accessed
31
32 August 16, 2014].
33
34
35

36
37
38 PACHER, G. V. 2014. Avaliação de áreas prioritárias para pagamento por serviços ambientais de
39 proteção de solos na bacia do rio Paraíba do sul em São Paulo. MSc. Dissertation. Instituto
40 Tecnológico da Aeronáutica, São José dos Campos, Brazil.
41
42
43

44
45
46 POORTER, L. ET AL. 2016. Biomass resilience of Neotropical secondary forests. *Nature* 530: 211–214.
47
48 Available at: <http://www.nature.com/doi/10.1038/nature16512>.
49
50

51
52 R CORE DEVELOPMENT CORE TEAM. (2011) R: a language and environment for statistical computing. R
53 Foundation for Statistical Computing. <http://www.R-project.org>
54
55

56
57 RAPIDEYE AG (2012). Satellite imagery product specifications [online]. Available from:
58 www.rapideye.net/upload/RE_Product_Specifications_ENG.pdf [accessed: 24-05-2012].
59
60

- 1
2 ROMÁN-DAÑOBEYTIA, F. J., S. I. LEVY-TACHER, P. MACARIO-MENDOZA AND J. ZÚÑIGA-MORALES
3
4 (2014). "Redefining secondary forests in the Mexican Forest Code: Implications for management,
5
6 restoration, and conservation." *Forests* 5(5): 978-991.
7
8
9
10 SAURA, S. AND PASCUAL-HORTAL, L. 2007. A new habitat availability index to integrate connectivity in
11
12 landscape conservation planning: comparison with existing indices and application to a case
13
14 study. *Landscape and Urban Planning* 83 (2-3): 91-103.
15
16
17 SAURA, S. AND RUBIO, L. 2010. A common currency for the different ways in which patches and links
18
19 can contribute to habitat availability and connectivity in the landscape. *Ecography* 33: 523-537.
20
21
22 SAURA, S. AND TORNÉ, J. 2009. Conefor Sensinode 2.2: a software package for quantifying the
23
24 importance of habitat patches for landscape connectivity. *Environmental Modelling Software* 24:
25
26 135-139.
27
28
29
30 SHARP, R., TALLIS, H.T., RICKETTS, T., GUERRY, A.D., WOOD, S.A., CHAPLIN-KRAMER, R.,
31
32 NELSON, E., ENNAANAY, D., WOLNY, S., OLWERO, N., VIGERSTOL, K., PENNINGTON,
33
34 D., MENDOZA, G., AUKEMA, J., FOSTER, J., FORREST, J., CAMERON, D., ARKEMA, K.,
35
36 LONSDORF, E., KENNEDY, C., VERUTES, G., KIM, C.K., GUANNEL, G., PAPENFUS, M.,
37
38 TOFT, J., MARSIK, M., BERNHARDT, J., GRIFFIN, R., GLOWINSKI, K., CHAUMONT, N.,
39
40 PERELMAN, A., LACAYO, M. MANDLE, L., HAMEL, P., VOGL, A.L., ROGERS, L., AND
41
42 BIERBOWER, W. 2015. InVEST +VERSION+ User's Guide. The Natural Capital Project,
43
44 Stanford University, University of Minnesota, The Nature Conservancy, and World Wildlife
45
46 Fund.
47
48
49
50
51
52 SILVA, F. G. B, MINOTTI, R. T., NETO, F. L., PRIMAVESI, O., CRESTANA, S. Loss of soil
53
54 determination in fazenda Canchim – SP (Embrapa) using geographic information systems and
55
56 USLE 2D. 2010. *Eng. Sanit. Ambient.* 15: 141–148.
57
58
59
60

- 1
2 SINISGALLI, P., BUENO, A. K., FERNANDES, V. B. 2014. Pesquisa sobre a dinâmica dos mercados
3
4 de terras de São Luís do Paraitinga: subsídios para o cálculo de pagamento por serviços
5
6 ambientais. Relatório de Pesquisa.
7
8
- 9
10 SOARES-FILHO, B., R. RAJÃO, AND M. MACEDO. 2014. Cracking Brazil's Forest Code. *Science* (80-.).
11
12 344: 363–364. Available at: [http://www.spde.org/documentos/noticias/Science-2014-Soares-](http://www.spde.org/documentos/noticias/Science-2014-Soares-Filho-363-4.pdf)
13
14 [Filho-363-4.pdf](http://www.spde.org/documentos/noticias/Science-2014-Soares-Filho-363-4.pdf) [Accessed July 12, 2014].
15
16
- 17 SOUSA-JÚNIOR, W. C., RIBEIRO, T., PACHER, G. V., PAVANI, B. F. 2014. Pagamento por
18
19 serviços ambientais nos mananciais da bacia do rio Paraíba do sul, SP. Relatório de Pesquisa.
20
21
- 22 STRASSBURG, B. B. N., LATAWIEC, A., PENTEADO, M., STONER, L. A., BARROS, F. S.,
23
24 RANGEL, M. C., SANSEVERO, J. B. B., IRRIBAREM, A., BARBIERI, R. F., ALVES-PINTO
25
26 H., RESENDE, F., LEMGRUBER, L, 2015. Análise integrada do uso da terra e de incorporação
27
28 dos serviços ecossistêmicos na formulação de políticas regionais – Bacia do Rio Paraitinga – São
29
30 Paulo. Relatório de pesquisa.
31
32
33
- 34
35 TOPODATA, 2015. Banco de dados geomorfométricos do Brasil. Electronic Database accessible at
36
37 <http://www.webmapit.com.br/inpe/topodata/>
38
39
- 40 VERHAGEN W, VAN TEEFFELLEN AJA, COMPAGNUCCI AB, POGGIO L, GIMONA A, VERBURG PH (2016)
41
42 Effects of landscape configuration on mapping ecosystem service capacity: a review of evidence
43
44 and a case study in Scotland. *Land Ecol* 31:1457–1479.
45
46
47
- 48 WHITMEE S, ORME CDL (2012) Predicting dispersal distance in mammals: a trait-based approach. *J*
49
50 *Anim Ecol* DOI: 10.1111/j.1365-2656.2012.02030.x
51
52
- 53 WRIGHT, S. J., AND H. C. MULLER-LANDAU. 2006. The future of tropical forest species. *Biotropica*
54
55 38:287–301.
56
57
58
59
60

1
2
3
4
5
6
7
8
9
10
11
12
13
14
15
16
17
18
19
20
21
22
23
24
25
26
27
28
29
30
31
32
33
34
35
36
37
38
39
40
41
42
43
44
45
46
47
48
49
50
51
52
53
54
55
56
57
58
59
60

For Peer Review Only

TABLE 1. Description of the three land use/cover scenarios

Table 1. Land-cover scenarios

Spatial layer / analysis	Scenario 0	Scenario 1	Scenario 2
	Old growth forests only	Current land-cover	Natural regeneration in abandoned pasturelands
Old-growth forests	Included	Included	Included
Secondary forests	Not included	Included, current	Included, current + abandoned pasturelands
Abandoned pastures	Remains abandoned	Remains abandoned	Becomes secondary forests
Habitat availability	Performed	Performed	Performed
Carbon Stocks	Not Performed	Performed	Performed
Sediment retention	Not Performed	Performed	Performed

TABLE 2. Carbon stock in each land use/cover (tonne/hectare) in the Paraitinga region, at the Brazilian Atlantic Forest.

Land use description	Above	Below	Soil	Dead	Total (t/ha)
Degraded areas	0	0	0	0	-
Burned areas	0	0	0	0	-
Urban areas	15	3.8	41	0	60
Water	0	0	0	0	-
Croplands	7.2	1.9	62.44	1.1	73
Secondary forests	69	13.2	90.6	3.6	176
Old-growth forests	134	27.6	90.6	3.6	256
Managed pastures	2.9	7.7	94.6	1.1	106
Degraded pastures	2.9	7.7	94.6	1.1	106
Abandoned pastures	2.9	7.7	94.6	1.1	106
Timber plantations	56.7	9.9	74.3	7.4	148
Bare soils	0	0	0	0	-

TABLE 3. Land prices (per hectare) in Paraitinga region, at the Brazilian Atlantic Forest. These prices are expressed considering the exchange rate in 18 December 2015 (US\$ 1 = R\$ 3.89) and were obtained from FNP (2015).

Land use	R\$	US\$
Crops	26,333	6,769
Pastures	11,992	3,083
Degraded and abandoned pastures	10,883	2,798
Timber plantations and others	14,860	3,820

TABLE 4. Current land use (S1) and land use if abandoned pastures recover naturally to secondary forests (S2).

Land use description	S1 (hectares)	S1 (%)	S2 (hectares)	S2 (%)
Degraded areas	5,120	2.1%	5,120	2.1%
Burned soils	5,727	2.4%	5,727	2.4%
Urban areas	492	0.2%	492	0.2%
Water	3,416	1.4%	3,416	1.4%
Crops	80	0.0%	80	0.0%
Secondary forests	13,165	5.5%	37,198	15.4%
Old-growth forests	46,025	19.1%	46,025	19.1%
Managed pastures	75,372	31.2%	75,372	31.2%
Degraded pastures	51,646	21.4%	51,646	21.4%
Abandoned pastures	24,034	10.0%	-	0.0%
Timber plantations	15,663	6.5%	15,663	6.5%
Bare soils	686	0.3%	686	0.3%
Total	241,425		241,425	

TABLE 5. Carbon stocks (in tonne/carbon) for scenarios 1 and 2, and the change from the scenario 1 to the scenario 2.

Land use	Carbon Stock (S1)(tC)	Carbon Stock (S2)(tC)	Change (S2-S1)(tC)
Degraded areas	-	-	-
Burned soils	-	-	-
Urban areas	29,440	29,440	-
Water	-	-	-
Crops	5,786	5,786	-
Secondary forests	2,322,230	6,561,773	4,239,543
Old-growth forests	11,773,198	11,773,198	-
Managed pastures	8,012,056	8,012,056	-
Degraded pastures	5,489,937	5,489,937	-
Abandoned pastures	2,554,781	-	- 2,554,781
Timber plantations	2,322,872	2,322,872	-
Bare soils	-	-	-
Total	32,510,299	34,195,061	1,684,762

TABLE 6. Economic value of the climate change mitigation service, under different assumptions.

Discount Rate	(@5 US\$/t CO ₂)	(@10 US\$/t CO ₂)	(@15 US\$/t CO ₂)
7.5%	21,201,291	42,402,582	63,603,873
5.0%	23,850,352	47,700,704	71,551,057
2.5%	27,032,760	54,065,520	81,098,280

For Peer Review Only

TABLE 7. Sediment retention and export.

	S1	S2	Difference
Total tons of sediment (Mton. / year)			
Retention	52.03	52.60	0.57
Total value for water purification service (US\$)			
Retention	927,440	937,530	10,094
Area value for water purification service (US\$/hectare)			
Retention	n/a	n/a	0.37
Total value for navigability services (million US\$)			
Retention	1,333.49	1,348.10	14,608.66
Area value for navigability services (US\$/hectare)			
Retention	n/a	n/a	607.84

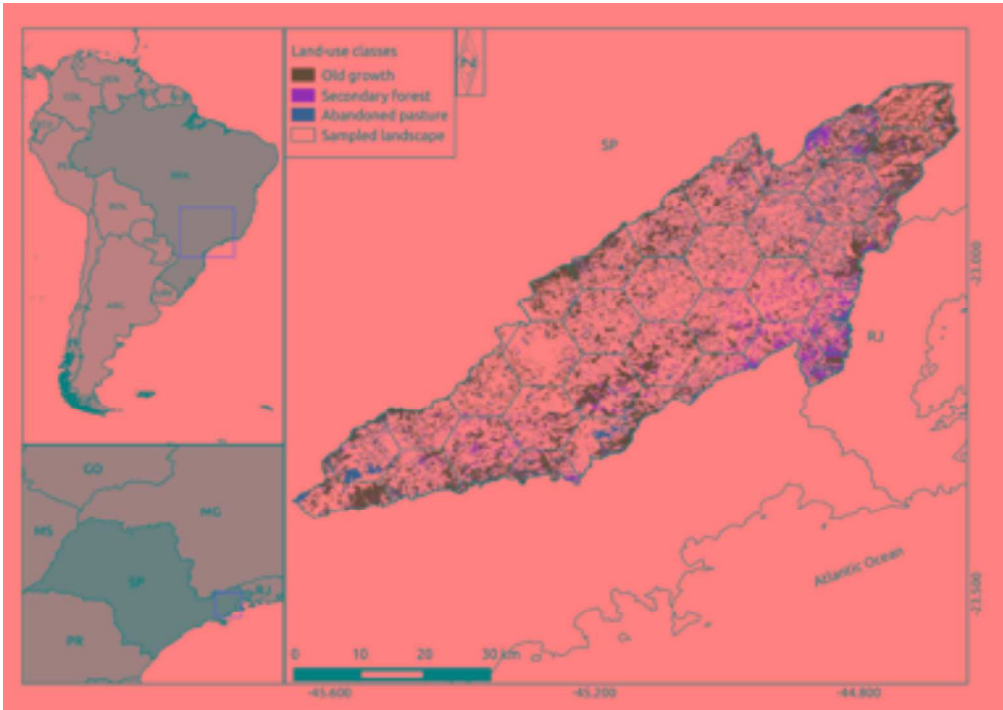
1
2
3
4
5
6
7
8
9
10
11
12
13
14
15
16
17
18
19
20
21
22
23
24
25
26
27
28
29
30
31
32
33
34
35
36
37
38
39
40
41
42
43
44
45
46
47
48
49
50
51
52
53
54
55
56
57
58
59
60

FIGURE 1. Location and land-use/cover classes used in the following analysis for the Paraitinga region, in the State of São Paulo, at the Brazilian Atlantic Forest. The hexagons represent different landscapes for the analysis of habitat availability (see this section below).

FIGURE 2. Maps of the land-use, elevation using the digital elevation model (DEM), rainfall erosivity and soil erodibility required to calculate the Universal Soil Loss Equation (USLE) for the sediment retention model in the software InVEST.

FIGURE 3. Habitat availability for species with short (100 m), intermediate (1000 m) and large (3000 m) dispersal ability in the different scenarios of land use/cover. Current old-growth forests only (Scenario 0 – a), current land use (Scenario 1 – b) and land use if abandoned pastures recover naturally to secondary forests (Scenario 2 – c).

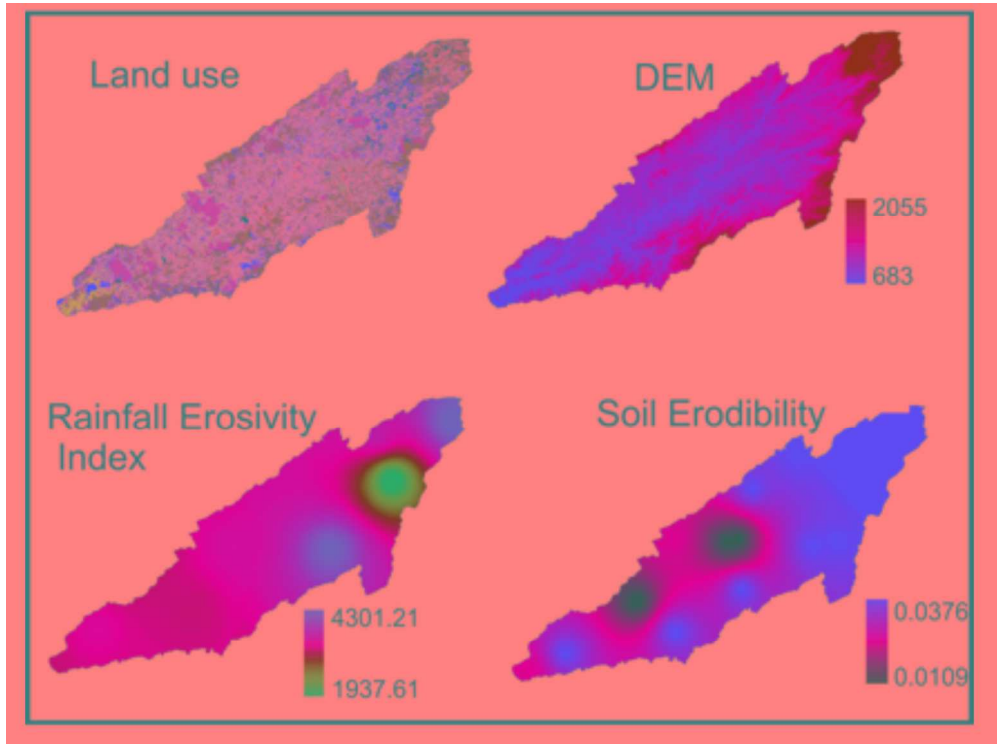
1
2
3
4
5
6
7
8
9
10
11
12
13
14
15
16
17
18
19
20
21
22
23
24
25
26
27
28
29
30
31
32
33
34
35
36
37
38
39
40
41
42
43
44
45
46
47
48
49
50
51
52
53
54
55
56
57
58
59
60



134x95mm (300 x 300 DPI)

View Only

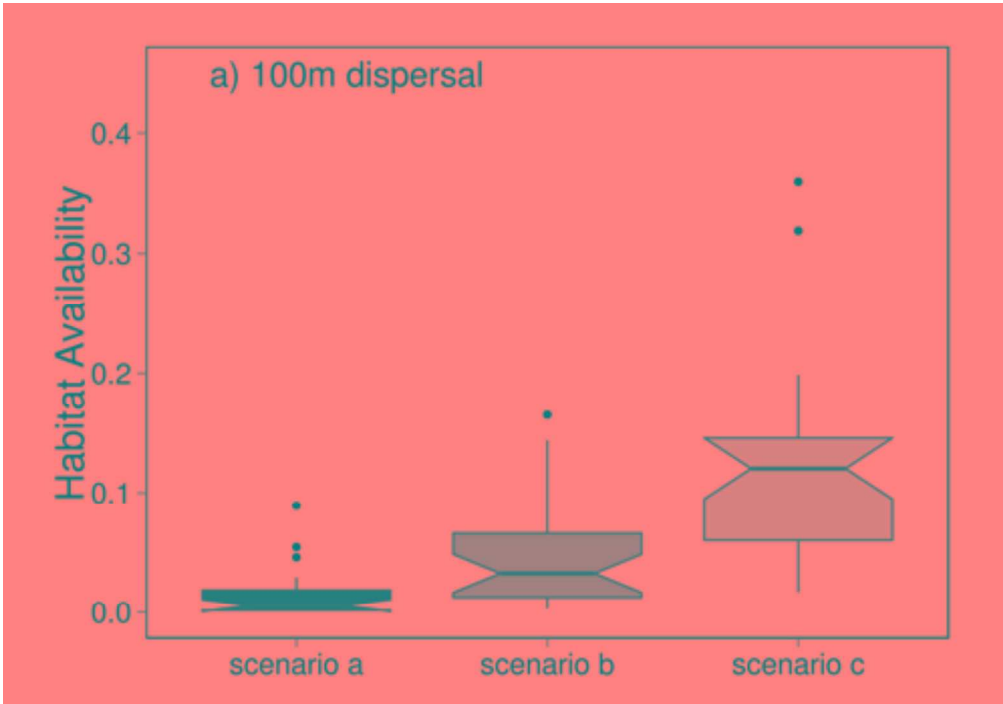
1
2
3
4
5
6
7
8
9
10
11
12
13
14
15
16
17
18
19
20
21
22
23
24
25
26
27
28
29
30
31
32
33
34
35
36
37
38
39
40
41
42
43
44
45
46
47
48
49
50
51
52
53
54
55
56
57
58
59
60



158x117mm (300 x 300 DPI)

Review Only

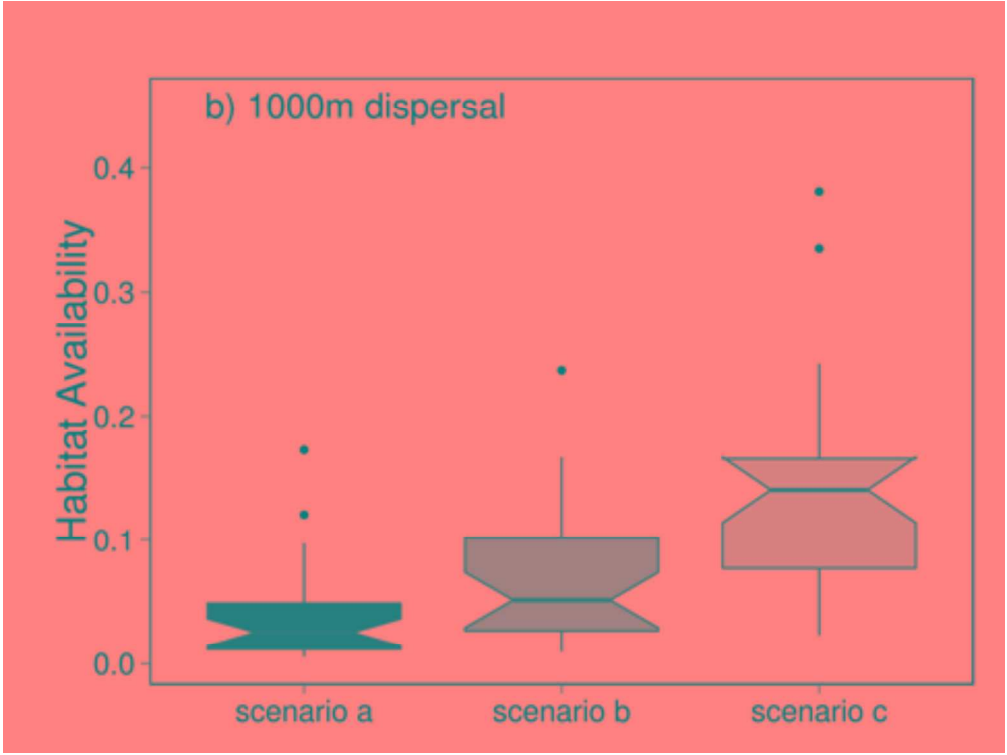
1
2
3
4
5
6
7
8
9
10
11
12
13
14
15
16
17
18
19
20
21
22
23
24
25
26
27
28
29
30
31
32
33
34
35
36
37
38
39
40
41
42
43
44
45
46
47
48
49
50
51
52
53
54
55
56
57
58
59
60



175x122mm (300 x 300 DPI)

View Only

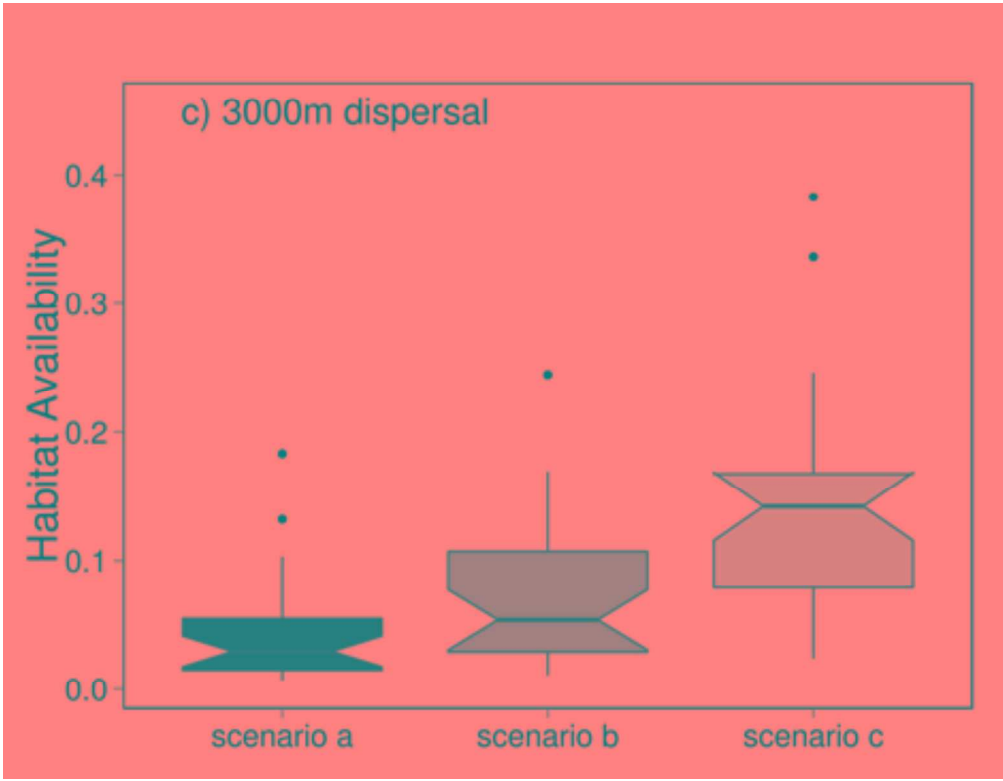
1
2
3
4
5
6
7
8
9
10
11
12
13
14
15
16
17
18
19
20
21
22
23
24
25
26
27
28
29
30
31
32
33
34
35
36
37
38
39
40
41
42
43
44
45
46
47
48
49
50
51
52
53
54
55
56
57
58
59
60



171x128mm (300 x 300 DPI)

ew Only

1
2
3
4
5
6
7
8
9
10
11
12
13
14
15
16
17
18
19
20
21
22
23
24
25
26
27
28
29
30
31
32
33
34
35
36
37
38
39
40
41
42
43
44
45
46
47
48
49
50
51
52
53
54
55
56
57
58
59
60



165x128mm (300 x 300 DPI)

ew Only