

# An adaptive and flexible Climate Risk Assessment Framework for European regions

Bachmann, M.<sup>1</sup>, Mechler, R.<sup>1</sup>, Higuera-Roa, O.<sup>1</sup>, Pirani, A.<sup>2</sup>, Pal, J.<sup>2</sup>, Reimann, L.<sup>3</sup>, Mazzoleni, M.<sup>3</sup>, Buskop, T.<sup>3,4</sup> and J. Mysiak<sup>2</sup>

<sup>1</sup> International Institute for Applied Systems Analysis, Laxenburg, Austria  
<sup>2</sup> Euro-Mediterranean Center on Climate Change, Venice, Italy  
<sup>3</sup> Institute for Environmental Studies, Vrije Universiteit Amsterdam, Amsterdam, Netherlands  
<sup>4</sup> Deltares, Delft, Netherlands



## Background//About

Climate Risk Assessments (CRA) are  
 → key for understanding scope and scale of climate risks  
 → urgently needed to plan and implement for climate risk management (CRM) responses.

Goal: Translation of EU Mission Adaptation at small and medium-scale: adapted for CRA at NUTS-2 and NUTS-3 level.

### The Framework

- ✓ entails five operational framework steps underpinned by a conceptual background, altogether allowing for **standardized flexibility**
- ✓ aligns with state-of-the-art methodologies, recent developments and on-the-ground needs
- ✓ is complemented by a toolbox for risk quantification (workflows organized by hazard)
- ✓ indicates **entry points for CRM actions** (response)
- ✓ addresses compound and multi-hazard aspects by referring to a wide variety of options risk quantification, qualitative risk assessment (storyline approach, narratives) together with **participatory processes**

Further research and work needs to be undertaken to efficiently connect climate risk estimation with CRM and adaptation strategies.



Figure 2: Operational level of the CLIMAX framework with NUTS and NUTS3 classification.

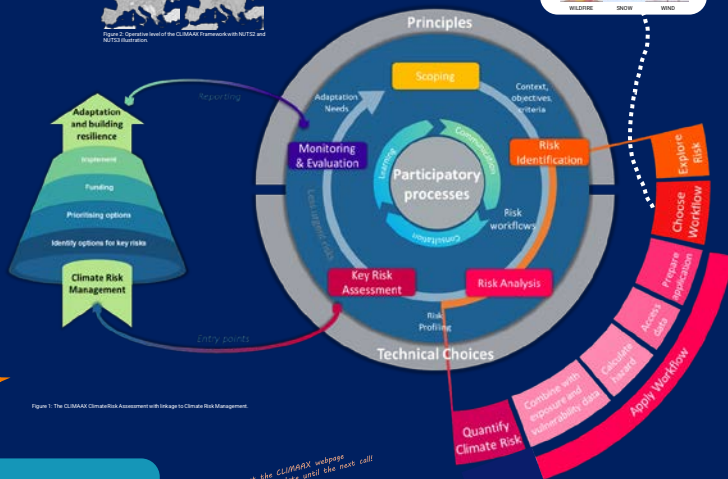


Figure 1: The CLIMAX Climate Risk Assessment with linkage to Climate Risk Management

## Methods



Check out the CLIMAX webpage and stay up to date until the next call!



[bachmann@iiasa.ac.at](mailto:bachmann@iiasa.ac.at)

<https://www.climax.eu>  
<https://handbook.climax.eu>

## Hazards



## What's new?

**Key Risk Assessment** with Risk Evaluation according to risk severity and urgency



Inclusion of **Climate Risk Management** Responses to the CRA



**Integrative Approach** (quantitative and qualitative) with strong needs-driven, participatory aspects and focus on learning (iteration)



## What's next?

**Framework Implementation** with 50+ European regions including M&E



**Climate Risk Evaluation** Development of indicators and bringing together risk severity, tolerance and urgency in Key Risk Assessment



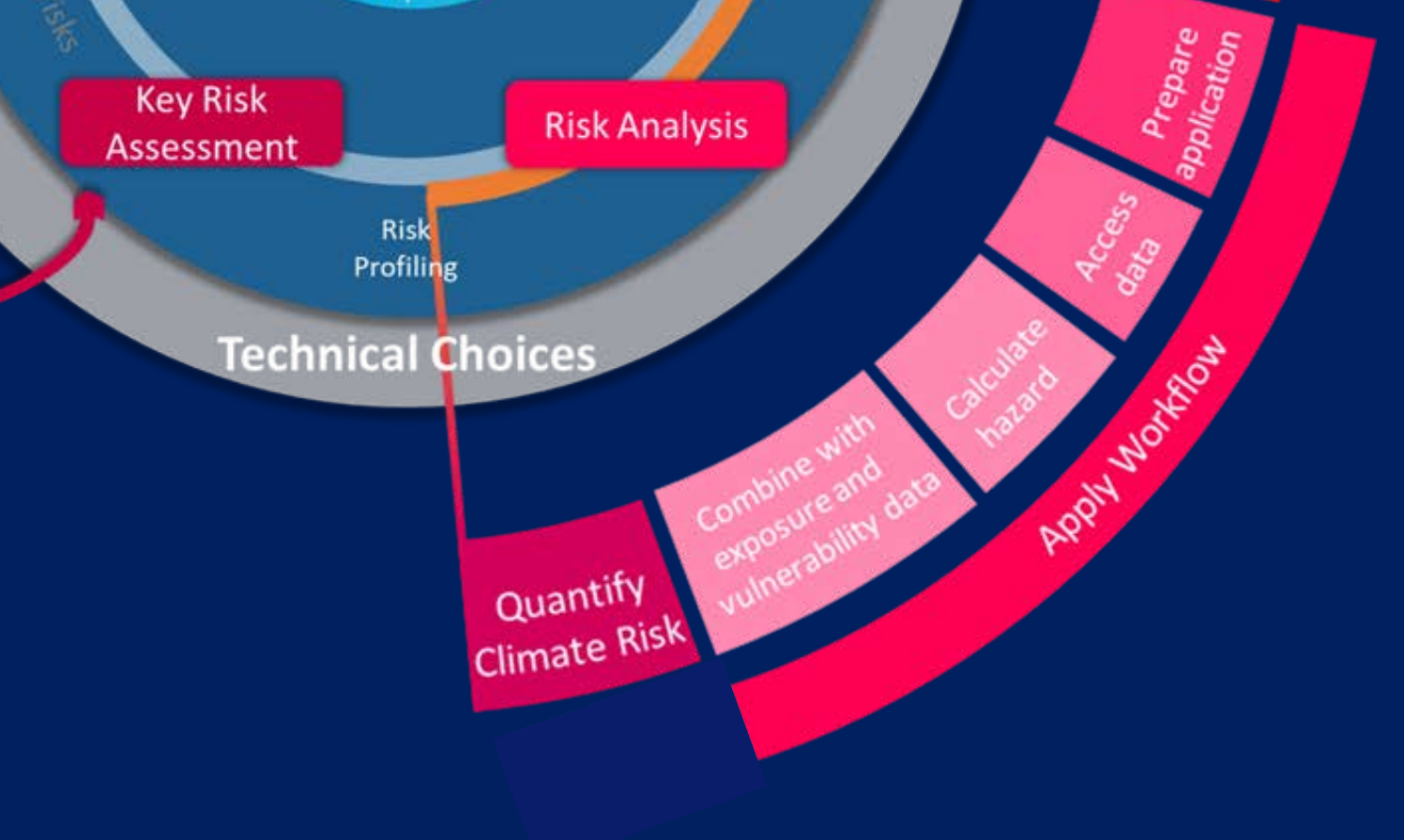
## Acknowledgements

Special thanks to all contributing partners from the CLIMAX project, especially to Bart van den Hurk, Frederiek Sperna-Wieland, Dana Sluparu, Thomas Kühn, Fredrik Wetterhall, Milana Vučković and our five Pilot regions.

The CLIMAX project is funded by the European Union under Grant agreement ID 101093964. This publication was funded by the European Union. Its contents are the sole responsibility of the author(s) and do not necessarily reflect the views of the European Union.







Key Risk Assessment

Risk Analysis

Risk Profiling

Technical Choices

Prepare application

Access data

Calculate hazard

Combine with exposure and vulnerability data

Quantify Climate Risk

Apply Workflow

